

# SECTION 1

# PARTITIONING

# SYSTEMS

Pedestal Mount Overhead Braced	10
Pedestal Mount Ceiling Fixed	14
Floor Mount Overhead Braced	18
Floor Mount Ceiling Fixed	22
Floor Mount Free Standing	26
Full Height Privacy Core	30
Full Height Privacy Ultra	34
Full Height Privacy Max	38





Our floor mount free standing wet area partitioning system is one of the most sophisticated systems we offer.

This high quality, low maintenance solution is specifically designed for use in low traffic areas and is suitable for upmarket corporate applications.

REGULATORY COMPLIANCE

- NCC 2022 Part F — Deem to Satisfy Provisions
- F4D82c — Door removable from outside if less than 1.2m between pan and doorway.

APPLICATIONS

- Corporate amenities
- Low traffic areas

“The floor mount free standing partitioning system offers a sleek, minimalist design for use in low traffic areas.”

Matthew Ponza  
Specification Manager, DuraCube

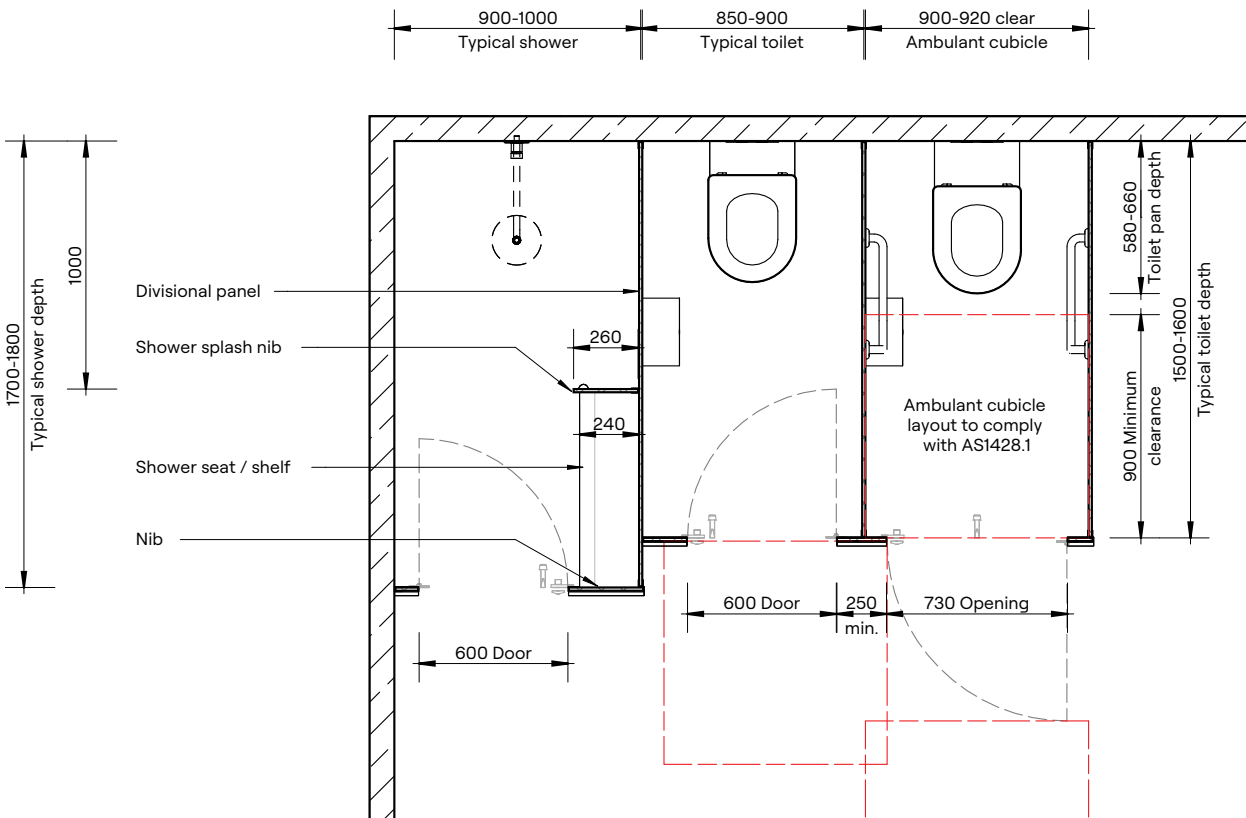
FEATURES & BENEFITS

- No headrail or ceiling fixing creates a sleek, modern design with clean lines
- Nibs mounted to the floor provide stability
- DuraSafe 13mm compact laminate construction
- No edge strip required as compact laminate black core is visible on the edges
- Impact-resistant construction
- Vandal-resistant surface
- Waterproof, suitable for hose cleaning
- Easy to clean and sanitise
- Reduced maintenance time and cost
- Overall system height 1900mm AFFL

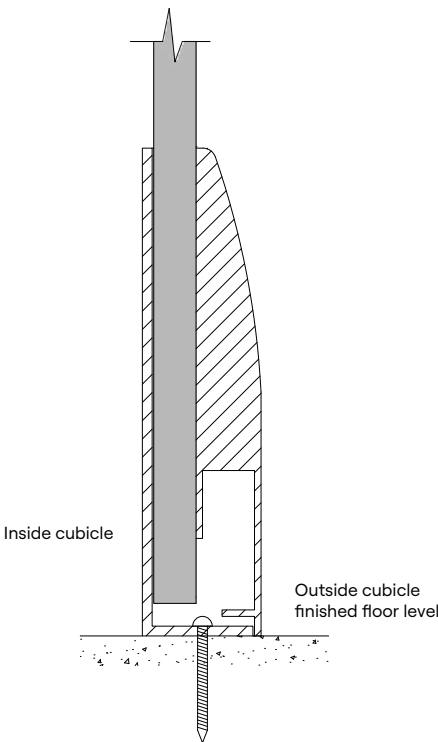
**Please Note:** This system is only suitable for installation on a concrete sub-floor. Minimum fixing depth is 100mm. Fixings will penetrate the waterproofing membrane.



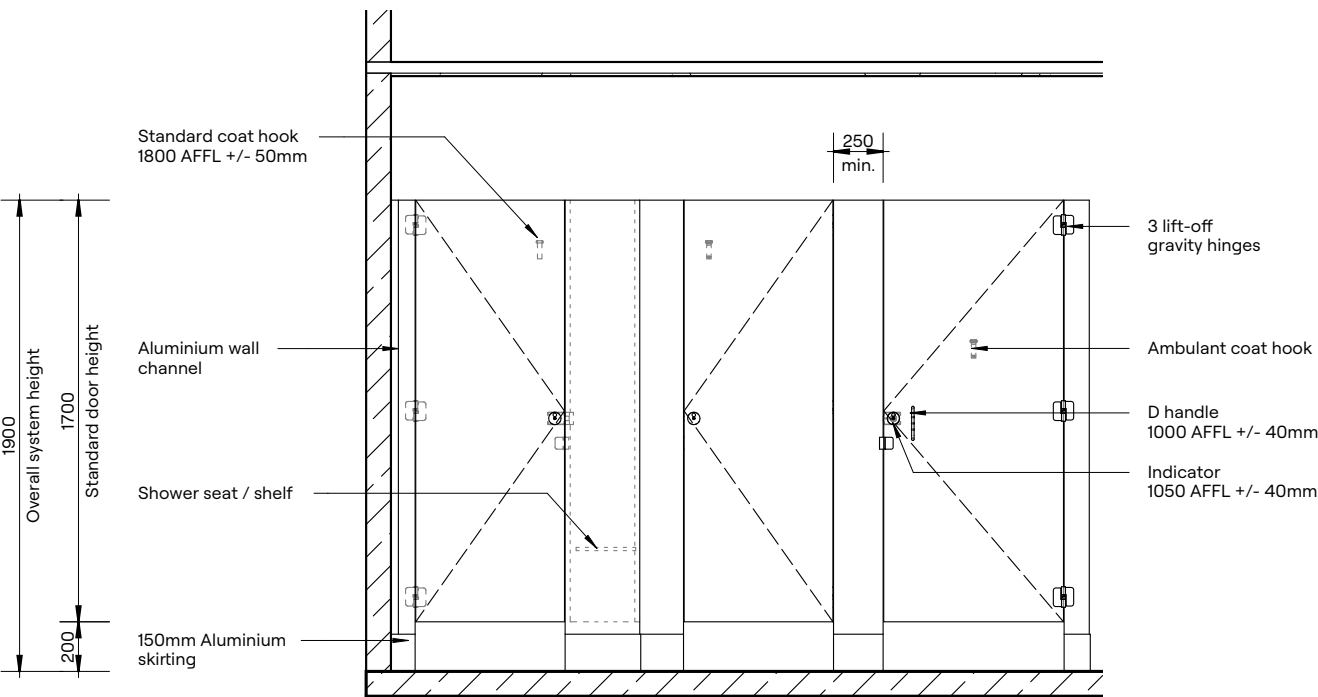
**DuraSafe Compact Laminate**  
All DuraCube panels and doors are constructed with DuraSafe 13mm compact laminate.



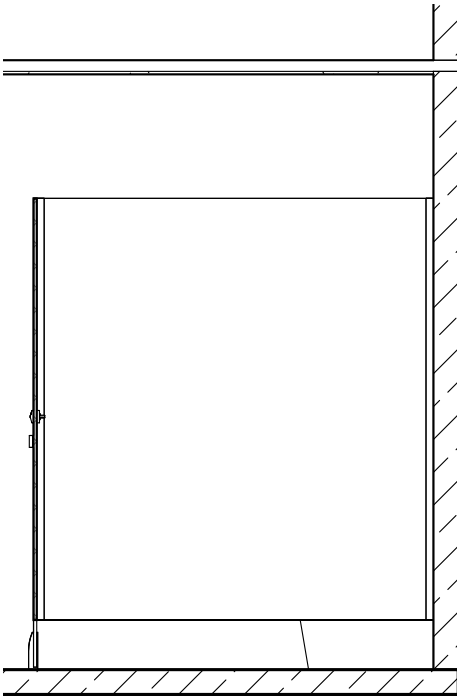
Plan



150mm Skirt Mount Detail



Elevation



Section

HOW TO SPECIFY
<b>Product</b> DuraCube floor mount free standing (FFS)
<b>Door and Panel Construction Material</b> DuraSafe 13mm compact laminate
<b>Hardware</b> Viva satin chrome hardware is standard Other hardware is available – see page 87
<b>Floor Mounting</b> Nib panels fixed with skirt mount Colour – Oyster Grey powder coat
<b>Overall System Height</b> 1900mm AFFL