

SECTION 1

PARTITIONING

SYSTEMS

Pedestal Mount Overhead Braced	10
Pedestal Mount Ceiling Fixed	14
Floor Mount Overhead Braced	18
Floor Mount Ceiling Fixed	22
Floor Mount Free Standing	26
Full Height Privacy Core	30
Full Height Privacy Ultra	34
Full Height Privacy Max	38





The DuraCube pedestal mount overhead braced wet area partitioning system is strong, economical, and designed to minimise material waste.

The system is quick and easy to assemble, reducing installation time.

Pedestal floor mounting allows for easy cleaning with a mop and hose.

REGULATORY COMPLIANCE

- NCC 2022 Part F — Deem to Satisfy Provisions
- F4D82c — Door removable from outside if less than 1.2m between pan and doorway

APPLICATIONS

- Schools and universities
- End-of-trip facilities
- Shopping centres
- Sport and gym change rooms
- Defence ablution blocks
- Corporate amenities
- Recreational amenities
- Pubs and clubs

FEATURES & BENEFITS

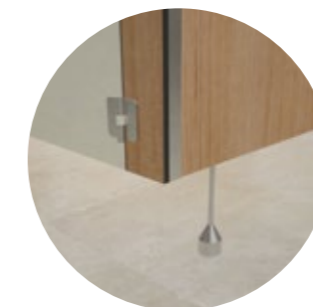
- The most cost-effective partitioning system
- DuraSafe 13mm compact laminate construction
- No edge strip required as compact laminate black core is visible on the edges
- Efficient use of materials
- Impact-resistant construction
- Vandal-resistant surface
- Waterproof, suitable for hose cleaning
- Easy to clean and sanitise
- Reduced maintenance time and cost
- Quick and easy installation
- Overall system height 2020mm AFFL

“The pedestal mount overhead braced partitioning system is strong, quick and easy to install, and easy to clean.”

Mark Simpson
Founder, DuraCube



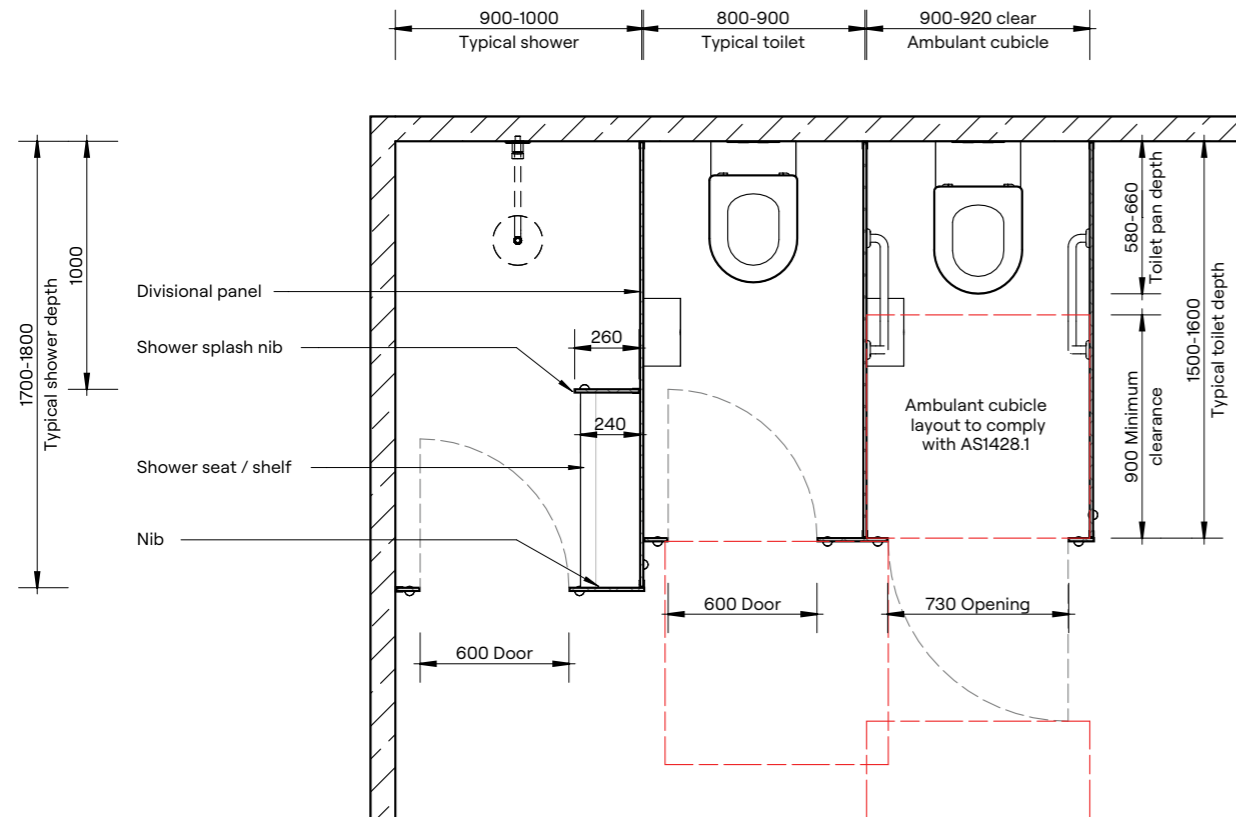
Standard pedestal leg



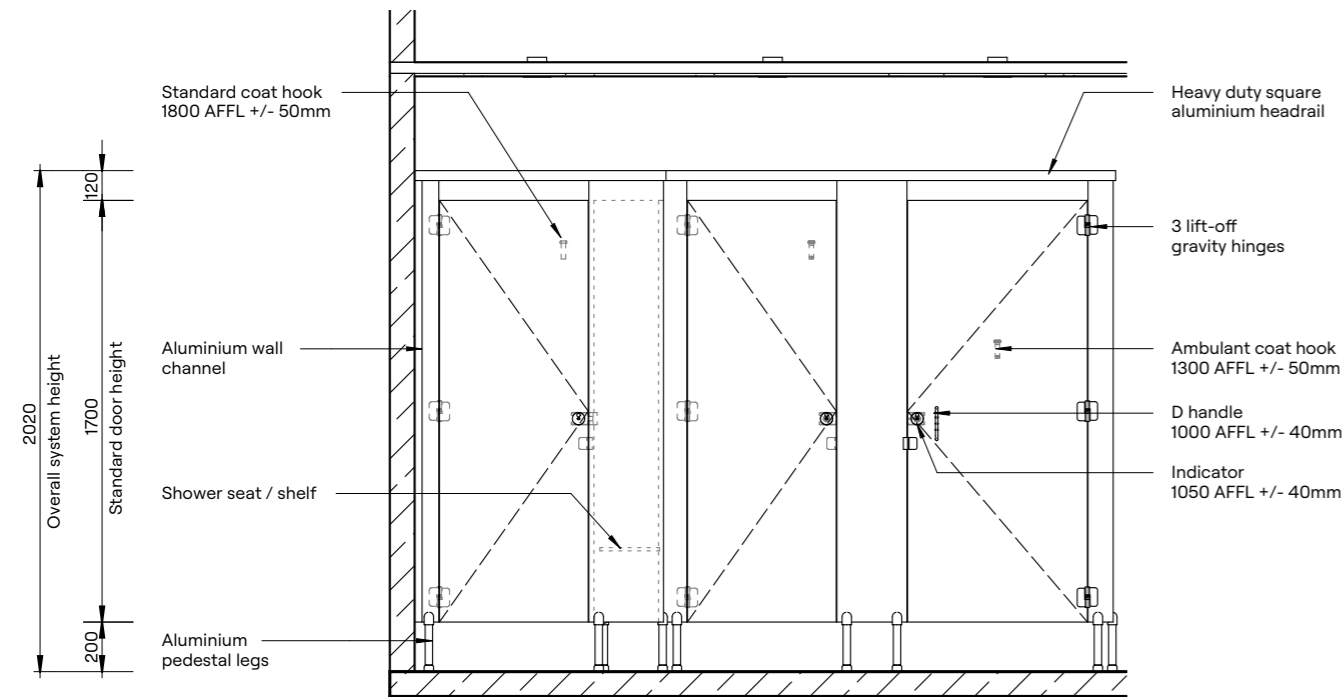
Optional setback pedestal leg



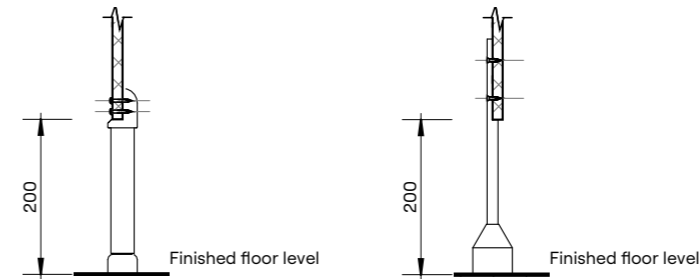
DuraSafe Compact Laminate
All DuraCube panels and doors are constructed with DuraSafe 13mm compact laminate.



Plan

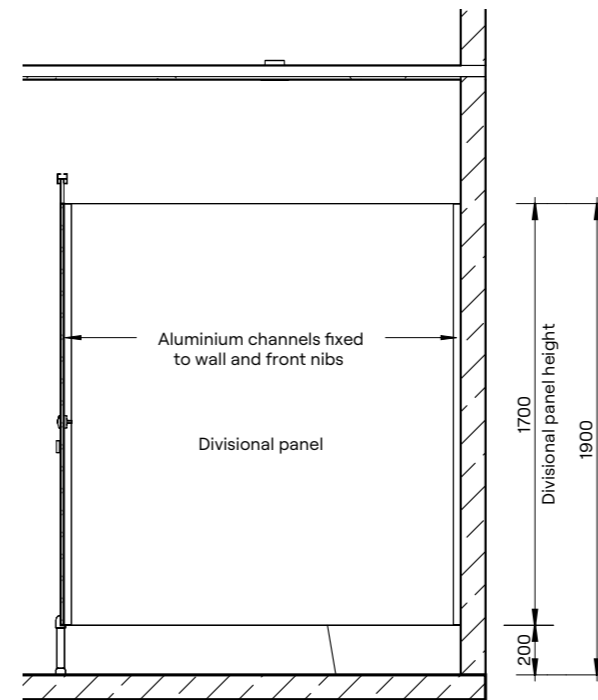


Elevation



Standard Pedestal Mount Detail

Optional Setback Pedestal Mount Detail



Section

“We manufacture our partitioning systems in-house and can deliver high quality products within three weeks from site measurement.”

Athol Simpson
Operations Manager, DuraCube

HOW TO SPECIFY

Product
DuraCube pedestal mount overhead braced (POB)

Door and Panel Construction Material
DuraSafe 13mm compact laminate

Hardware
Viva satin chrome hardware is standard. Other hardware is available – see page 87

Headrail
Aluminium square profile 40mm x 40mm
Colour – Oyster Grey powder coat

Floor Mounting
Adjustable 200mm aluminium pedestal legs

Overall System Height
2020mm AFFL