

SECTION 1

PARTITIONING

SYSTEMS

Pedestal Mount Overhead Braced (POB)	10
Pedestal Mount Ceiling Fixed (PCF)	14
Floor Mount Overhead Braced (FOB)	18
Floor Mount Ceiling Fixed (FCF)	22
Floor Mount Free Standing (FFS)	26
Full Height Privacy Core (FHPC)	30
Full Height Privacy Ultra (FHPU)	34
Full Height Privacy Max (FHPM)	38





DuraSafe 5003 Phillipine Teak

Our floor mount free standing wet area partitioning system is one of the most sophisticated systems we offer.

This high quality, low maintenance solution is specifically designed for use in low traffic areas and is suitable for upmarket corporate applications.

REGULATORY COMPLIANCE

- NCC 2022 Part F — Deem to Satisfy Provisions
- F4D82c — Door removable from outside if less than 1.2m between pan and doorway.

APPLICATIONS

- Corporate amenities
- Low traffic areas

“The floor mount free standing partitioning system offers a sleek, minimalist design for use in low traffic areas.”

Matthew Ponza
Specification Manager, DuraCube

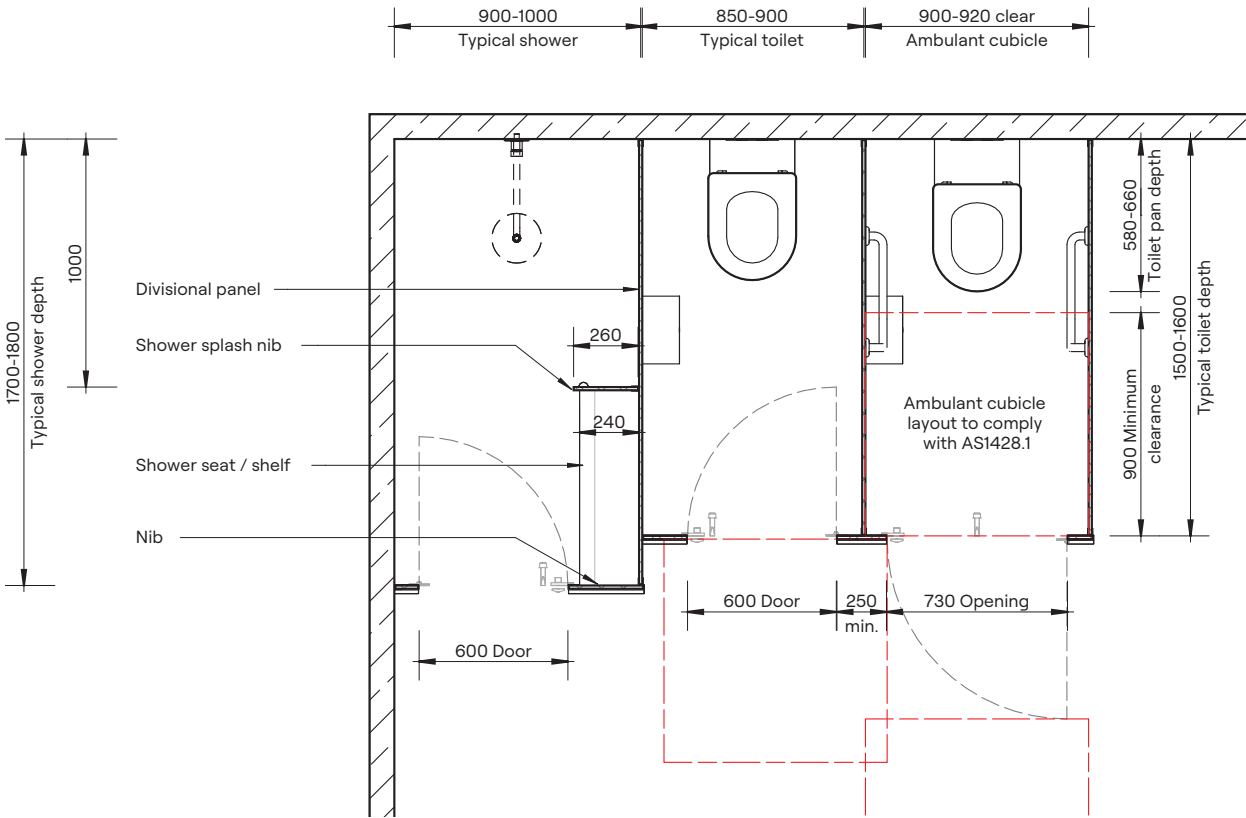
FEATURES & BENEFITS

- No headrail or ceiling fixing creates a sleek, modern design with clean lines
- Nibs mounted to the floor provide stability
- DuraSafe 13mm compact laminate construction
- No edge strip required as compact laminate black core is visible on the edges
- Impact-resistant construction
- Vandal-resistant surface
- Waterproof, suitable for hose cleaning
- Easy to clean and sanitise
- Reduced maintenance time and cost
- Overall system height 1900mm AFFL

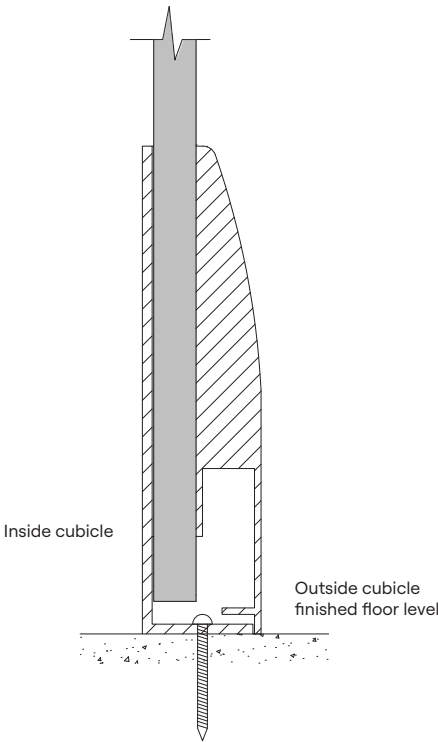
Please Note: This system is only suitable for installation on a concrete sub-floor. Minimum fixing depth is 100mm. Fixings will penetrate the waterproofing membrane.



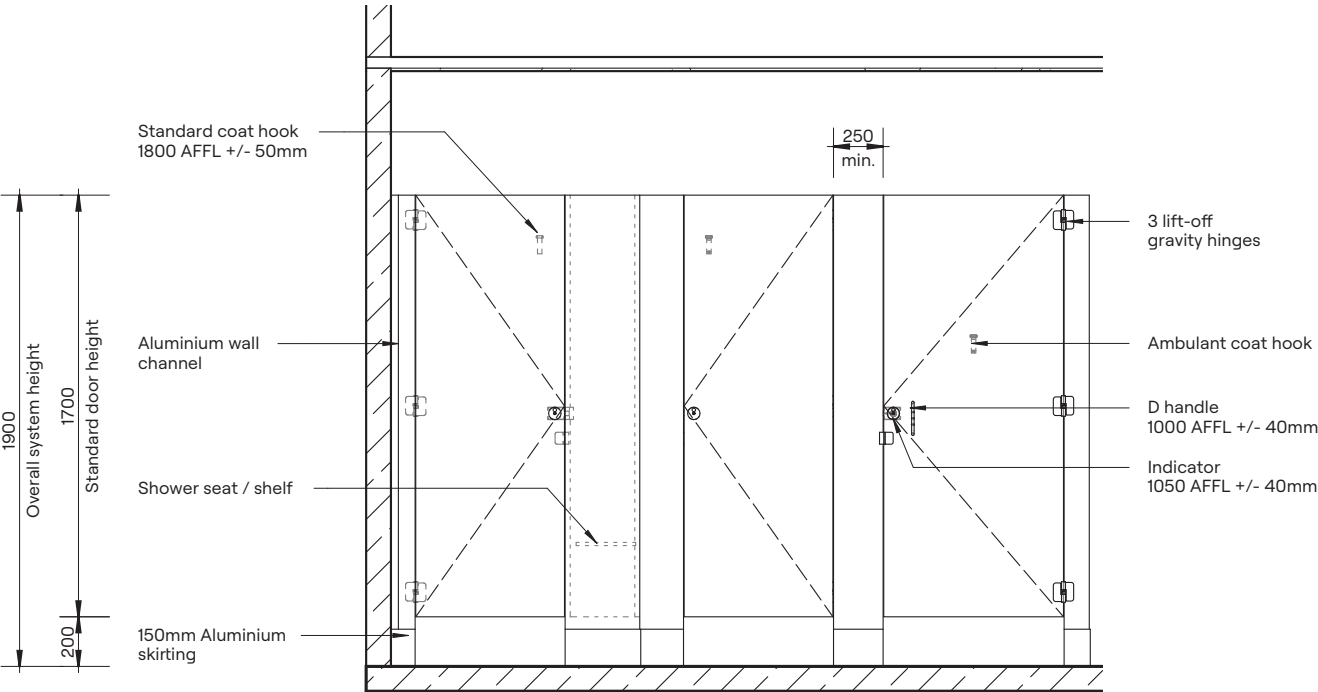
DuraSafe Compact Laminate
All DuraCube panels and doors are constructed with DuraSafe 13mm compact laminate.



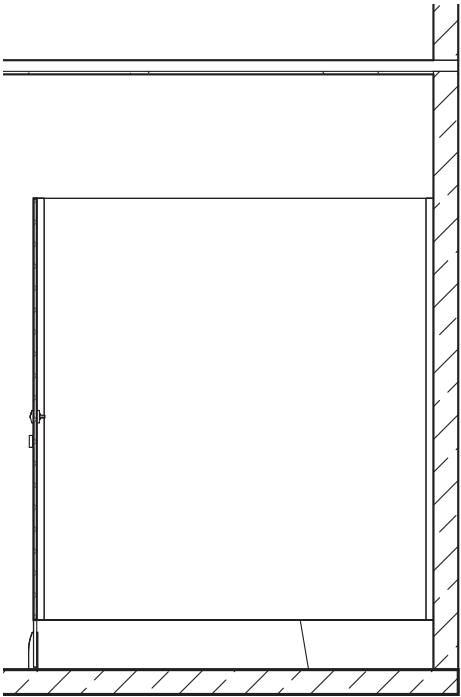
Plan



150mm Skirt Mount Detail



Elevation



Section

HOW TO SPECIFY
Product DuraCube floor mount free standing (FFS)
Door and Panel Construction Material DuraSafe 13mm compact laminate
Hardware Viva satin chrome hardware is standard Other hardware is available – see pages 90-91
Floor Mounting Nib panels fixed with skirt mount Colour – Oyster Grey powder coat
Overall System Height 1900mm AFFL