

# PRODUCT BROCHURE

Toilet & Shower Partitioning,  
Lockers, Vanity Benches &  
Bench Seating Solutions



**DURACUBE**<sup>®</sup>  
toilet partitions

Edition 1 - 2021

Everyone deserves a better washroom experience – we know this. That incorporates everyone from the design stage of a washroom right through to installation and the user experience. That's what we're here to create. **Passion and expertise delivering a superior washroom experience.**

We also know the washroom is one of the biggest pain points of the construction industry and it's often the most criticised aspect of any project. Understanding these frustrations has helped us develop the perfect solution to provide you with the fastest and most satisfying results.

We're a tight-knit team from a family business that cares. The team behind Duracube® has been providing the construction industry with washroom products and services since the 1980's. The Duracube® division was started in 2012 when the owners saw a need in the market for a superior toilet cubicle range which can be utilised in a range of facilities such as council owned buildings, education spaces, corporate offices, leisure centres, hospitality and public spaces. We work with architects, designers and builders to custom design their washrooms.

Our Duracube® antibacterial 13mm compact laminate is stocked and machined in our factory in Sydney, custom made to your specific needs and is shipped Australia wide ready for installation. We're backed with a team of installers and a network of distributors ensuring our product can be installed anywhere Australia-wide.

**CALL US TODAY AND FIND OUT  
HOW YOUR NEXT PROJECT  
CAN BE ANOTHER SUCCESS!**



## OUR SOLUTIONS

At Duracube® we provide our clients with durable, robust, and practical antibacterial 13mm compact laminate toilet and shower partition systems. We also have a full range of custom-made bathroom/wet area products including bench seating, lockers, privacy panels and vanities that can be combined with our partition systems to transform your wet area.

### **DURACUBE® 3000 SERIES TOILET PARTITIONING SYSTEMS**

The Duracube® 3000 Series offers low maintenance antibacterial toilet partitioning systems, designed specifically for high use wet areas. We understand every space is unique, so we've developed six common partitioning systems that are manufactured inhouse within only 3 weeks. We specialise in meeting your exact requirements, which is why we also offer customised solutions to help you create the perfect washroom!

### **DURACUBE® VANITIES (3VAN)**

Duracube® antibacterial 13mm compact laminate vanity benches are a stylish addition to any wet area, to hide drainage and match your partitioning system.

### **DURACUBE® LOCKERS (3LOC)**

Our lockers are constructed of antibacterial 13mm compact laminate, providing a practical design layout with a waterproof, low maintenance and impact resistant finish. What's more, we can match the doors of your lockers to your partitioning system!

### **DURACUBE® PRIVACY PANELS (3PP)**

A versatile screening solution made of antibacterial 13mm compact laminate, Duracube's privacy panels provide added privacy in open plan bathrooms. Privacy panels are often utilised between individual urinals or as a substitute for an airlock.

### **DURACUBE® CHILDCARE PRIVACY PANELS (3CPP)**

Durasafe® antibacterial 13mm compact laminate childcare privacy panels are often used as dividers between toilets at preschools and early learning centres.

### **DURACUBE® BENCH SEATING (3BS)**

The Duracube® bench seating systems are created to compliment your partition system with a low maintenance, attractive design.

## WHERE WE SERVICE

Our Durasafe® antibacterial 13mm compact laminate is stocked and machined in our factory in Sydney, custom made to your specific needs and is shipped Australia wide ready for installation. We foster and rely on repeat business and are proud of our growing customer base covering all areas in Victoria, New South Wales, Australian Capital Territory, Tasmania and Queensland. We're backed with a team of installers in Sydney Metro, Regional NSW, Canberra, Melbourne and Adelaide.



**10** | **YEAR**  
LIMITED  
WARRANTY



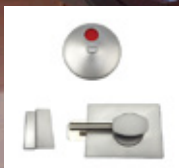
# PEDESTAL MOUNT OVERHEAD BRACED (3POB)

## STANDARD HARDWARE COMPONENTS

VIVA SATIN CHROME HARDWARE



Standard Lock  
& Indicator



Ambulant Lock  
& Indicator



Ambulant  
D Handle



Gravity Hinge  
3 per Door



Door Stop &  
Coat Hook



Bumper



Pedestal Leg



Square Headrail

# 3000 SERIES PEDESTAL MOUNT OVERHEAD BRACED (3POB)

## FEATURES

- One of the most economical systems available in the range. Designed to minimise wastage and install time
- Constructed using antibacterial 13mm compact laminate
- Mounted on aluminum pedestal legs (standard 200mm high)
- Black Core visible on edges
- Viva satin chrome cast alloy hardware with concealed stainless steel fixings ( 3 gravity hold open hinges per door)
- Aluminium anodised extrusions

## HOW TO SPECIFY

### Product:

Duracube® 3000 Series Pedestal Mounted Overhead Braced System (3POB)

### Board Selection:

- Doors: Durasafe®, antibacterial 13mm compact laminate
- Divisional panels/frontals: antibacterial 13mm compact laminate

### Hardware:

Viva Satin Chrome Hardware or any custom hardware as per page 26

### Headrail:

Square profile

### Floor Mounting:

## BENEFITS

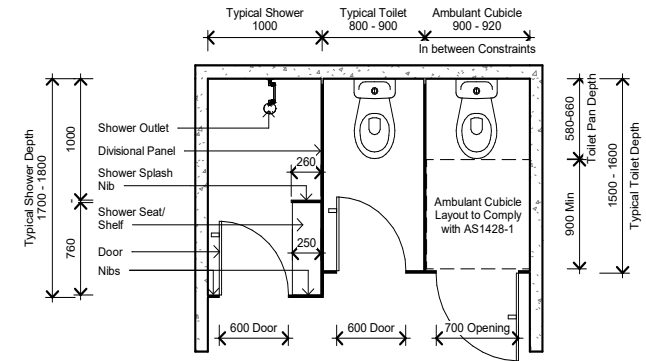
- Can be used in areas exposed to hose cleaning e.g shower areas
- Reduces maintenance
- Waterproof
- Vandal resistant
- Easy install
- Impact resistant surface
- No edge strip

## APPLICATION

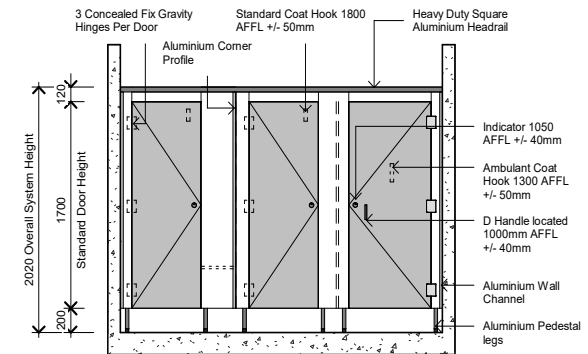
- Recreational Amenities
- Schools and Universities
- Pubs and Clubs
- Shopping Centres
- Sporting and Gym Change Rooms
- Factory toilets
- Ablution blocks
- Corporate office amenities



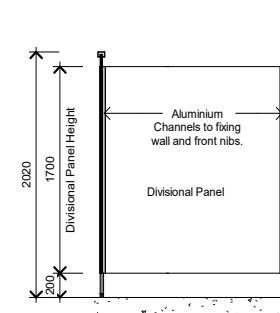
## TYPICAL FLOOR PLAN



## TYPICAL ELEVATION



## TYPICAL SECTION



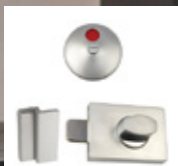
## OPTIONAL SET BACK PEDESTAL





# FLOOR MOUNT OVERHEAD BRACED (3FOB)

## STANDARD HARDWARE COMPONENTS VIVA SATIN CHROME HARDWARE



Standard Lock  
& Indicator



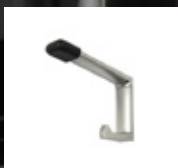
Ambulant Lock  
& Indicator



Ambulant  
D Handle



Cravity Hinge  
3 per Door



Door Stop &  
Coat Hook



Bumper



Floor Mounting  
40x12 Angle



Square Headrail

# 3000 SERIES FLOOR MOUNT OVERHEAD BRACED (3FOB)

## FEATURES

- Constructed using antibacterial 13mm compact laminate
- Nibs mounted directly to floor with aluminium trim
- Black Core visible on edges
- Viva satin chrome cast alloy hardware with concealed stainless steel fixings (3 gravity hold open hinges per door)
- Aluminium anodised extrusions
- Overall system height 2000mm AFFL

## HOW TO SPECIFY

### Product:

Duracube® 3000 Series Floor Mounted Overhead Braced System (3FOB)

### Board Selection:

- Doors: Durasafe®, antibacterial 13mm compact laminate
- Divisional panels/frontals: antibacterial 13mm compact laminate

### Hardware:

Viva Satin Chrome Hardware or any custom hardware as per page 26

### Headrail:

Square profile

### Floor Mounting:

Nibs fixed with 40 x 12mm anodised aluminium or optional

## BENEFITS

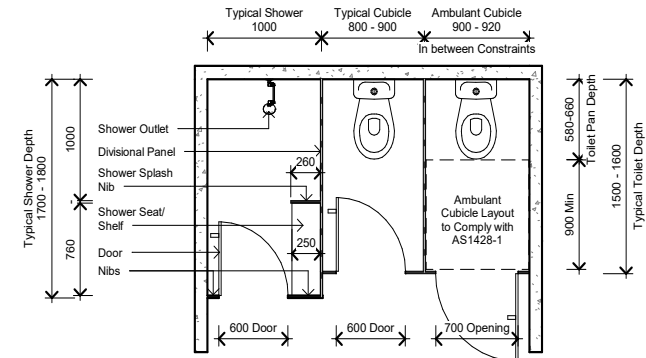
- Can be used in areas exposed to hose cleaning e.g shower areas
- Reduces maintenance
- Waterproof
- Vandal resistant
- Impact resistant surface
- No edge strip
- Direct fixing to floor ensures stability and strength

## APPLICATION

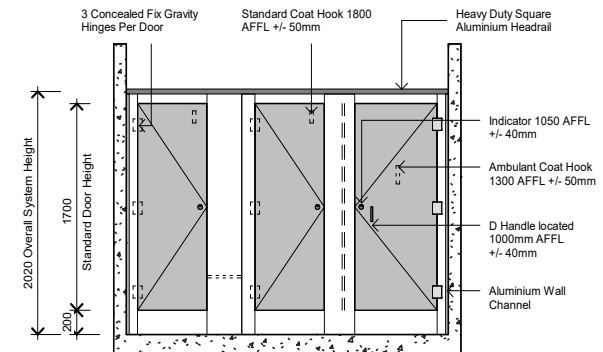
- Recreational Amenities
- Schools and Universities
- Pubs and Clubs
- End of trip (EOT) facilities
- Shopping Centres
- Sporting and Gym Change Rooms
- Factory toilets
- Ablution blocks
- Corporate office amenities



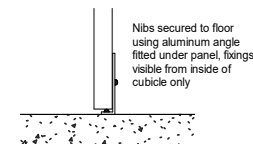
## TYPICAL FLOOR PLAN



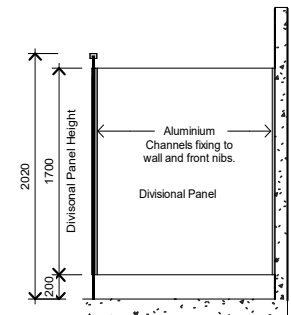
## TYPICAL ELEVATION



## FLOOR & CEILING FIXING DETAIL



## TYPICAL SECTION



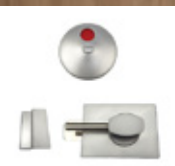
# FLOOR MOUNT CEILING FIXED (3FCF)

## STANDARD HARDWARE COMPONENTS

VIVA SATIN CHROME HARDWARE



Standard Lock  
& Indicator



Ambulant Lock  
& Indicator



Ambulant  
D Handle



Cravity Hinge  
3 per Door



Door Stop &  
Coat Hook



Bumper



Floor Mounting  
40x12 Angle



Ceiling Mount  
30x20 C Channel



# 3000 SERIES FLOOR MOUNT CEILING FIXED (3FCF)

## FEATURES

- One of the strongest systems that can withstand large amounts of use
- Constructed using antibacterial 13mm compact laminate
- Nibs mounted directly to floor and ceiling with aluminium trims
- Black Core visible on edges
- Viva satin chrome cast alloy hardware with concealed stainless steel fixings ( 3 gravity hold open hinges per door)
- Aluminium anodised extrusions
- Overall system height 2400-3000mm AFFL

## HOW TO SPECIFY

### Product:

Duracube® 3000 Series Floor Mounted Ceiling Fixed System (3FCF)

### Board Selection:

- Doors: Durasafe®, antibacterial 13mm compact laminate
- Divisional panels/frontals: antibacterial 13mm compact laminate

### Hardware:

Viva Satin Chrome Hardware or any custom hardware as per page 26

### Ceiling Mounting:

20 x 30mm anodised aluminium C channel fixed to the ceiling

### Floor Mounting:

Nibs fixed with 40 x 12mm anodised aluminium

## BENEFITS

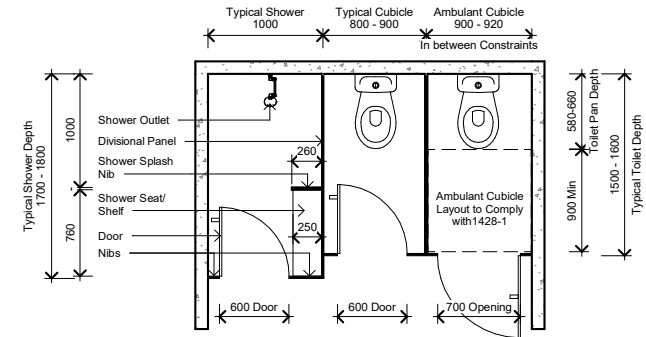
- Can be used in areas exposed to hose cleaning e.g shower areas
- Reduces maintenance
- Waterproof
- Vandal resistant
- Impact resistant surface
- No edge strip
- Direct fixing to floor and ceiling ensures stability

## APPLICATION

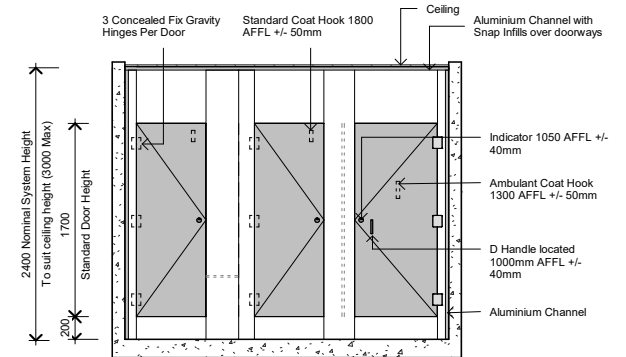
- Recreational Amenities
- Schools and Universities
- Pubs and Clubs
- End of trip (EOT) facilities
- Shopping Centres
- Sporting and Gym Change Rooms
- Corporate office amenities



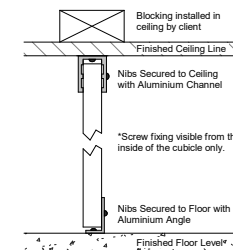
## TYPICAL FLOOR PLAN



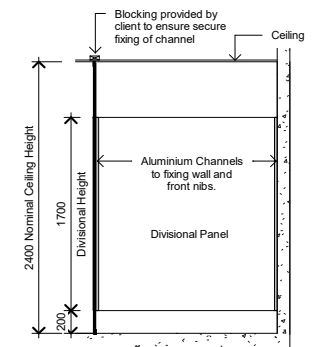
## TYPICAL ELEVATION



## FLOOR & CEILING FIXING DETAIL



## TYPICAL SECTION



# FLOOR MOUNT FREE STANDING (3FFS)

NEW  
SYSTEM



## STANDARD HARDWARE COMPONENTS

VIVA SATIN CHROME HARDWARE



Standard Lock  
& Indicator



Ambulant Lock  
& Indicator



Ambulant  
D Handle



Cravity Hinge  
3 per Door



Door Stop &  
Coat Hook



Bumper



Skirt Mount

# 3000 SERIES FLOOR MOUNT FREE STANDING (3FFS)

## FEATURES

- Constructed using 13mm compact laminate
- Nibs mounted directly to floor with aluminium trim (can only be installed with concrete sub floor and fixings will penetrate the water proofing)
- Black Core visible on edges
- Viva satin chrome cast alloy hardware with concealed stainless steel fixings (3 gravity hold open hinges per door)
- Aluminium anodised extrusions and floor mount
- Overall system height 1900mm AFFL

## HOW TO SPECIFY

### Product:

Duracube® 3000 Series Floor Mounted Free Standing System (3FFS)

### Board Selection:

- Doors: Durasafe®, 13mm compact laminate
- Divisional panels/frontals: 13mm compact laminate

### Hardware:

Viva Satin Chrome Hardware or any custom hardware as per page 26

### Floor Mounting:

Custom anodised aluminium skirt mount

## BENEFITS

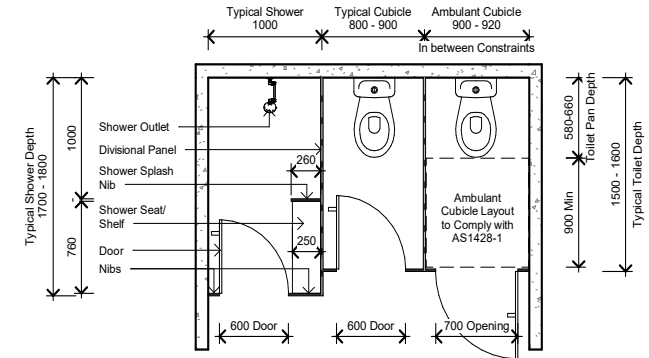
- Super sleek design
- Can be used in areas exposed to high moisture
- Waterproof
- Impact resistant surface
- No edge strip
- No headrail or fixing to the ceiling

## APPLICATION

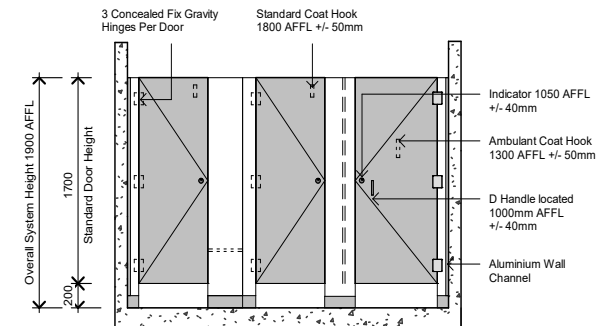
- Low traffic areas
- Corporate office amenities



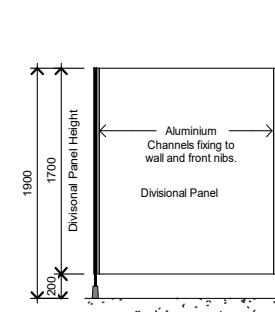
## TYPICAL FLOOR PLAN



## TYPICAL ELEVATION



## TYPICAL SECTION





# FULL HEIGHT UNISEX CORE (3UC)

NEW  
SYSTEM

## STANDARD HARDWARE COMPONENTS

VIVA SATIN CHROME HARDWARE



Standard Lock  
& Indicator



Ambulant Lock  
& Indicator



Ambulant  
D Handle



Gravity Hinge  
3 per Door



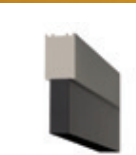
Door Stop &  
Coat Hook



Bumper



Floor Mounting  
40x12 Angle



Ceiling Mount  
30x20 C Channel

# 3000 SERIES FULL HEIGHT UNISEX CORE (3UC)

## FEATURES

- Designed to maximise privacy with little or no gaps under panels
- Constructed using antibacterial 13mm compact laminate
- Nibs and divisional panels fixed directly to floor and ceiling to maximise privacy
- Black Core visible on edges
- Viva satin chrome cast alloy hardware with concealed stainless steel fixings ( 3 gravity hold open hinges per door)
- Aluminium anodised extrusions
- Overall system height 2400 – 3000mm AFFL
- Complies with NCC 2015 Building Code of Australia – Volume One
- Optional ventilation slots available on panel above door

## HOW TO SPECIFY

### Product:

Duracube® 3000 Series Full Height - Unisex Core (3UC)

### Board Selection:

- Doors: Durasafe®, 13mm compact laminate
- Divisional panels/frontals: 13mm compact laminate

### Hardware:

Viva Satin Chrome Hardware or any custom hardware as per page 26

### Ceiling Mounting:

20 x 30mm anodised aluminium C channel fixed to the ceiling

### Floor Mounting:

Nibs fixed with 40 x 12mm anodised aluminium

## BENEFITS

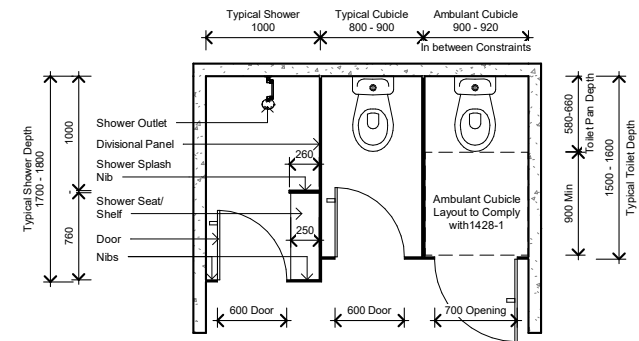
- Can be used in areas exposed to hose cleaning e.g shower areas
- Reduces maintenance
- Waterproof
- Vandal resistant
- Impact resistant surface
- No edge strip

## APPLICATION

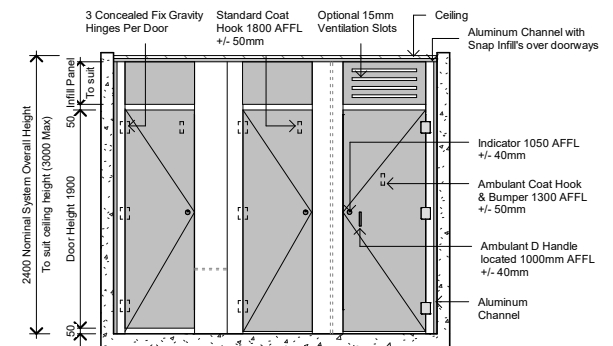
- Unisex/ gender neutral bathrooms
- Schools and Universities
- End of trip (EOT) facilities
- Shopping Centres
- Sporting and Gym Change Rooms
- Factory toilets
- Ablution blocks
- Corporate office amenities



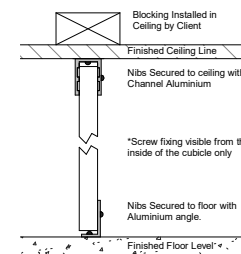
## TYPICAL FLOOR PLAN



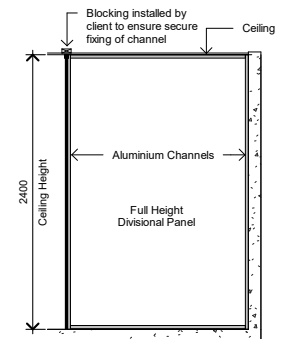
## TYPICAL ELEVATION



## FLOOR & CEILING FIXING DETAIL



## TYPICAL SECTION



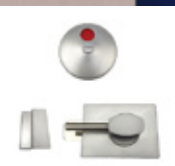
# FULL HEIGHT UNISEX ULTRA (3UU)

## STANDARD HARDWARE COMPONENTS

VIVA SATIN CHROME HARDWARE



Standard Lock  
& Indicator



Ambulant Lock  
& Indicator



Ambulant  
D Handle



Gravity Hinge  
3 per Door



Door Stop &  
Coat Hook



Bumper



Floor Mounting  
40x12 Angle



Ceiling Mount  
30x20 C Channel



# 3000 SERIES FULL HEIGHT UNISEX ULTRA (3UU)

## FEATURES

- Designed to maximise privacy with little or no gaps under panels
- Constructed using antibacterial 13mm compact laminate
- Nibs and divisional panels fixed directly to floor and ceiling to maximise privacy
- Black Core visible on edges
- Viva satin chrome cast alloy hardware with concealed stainless steel fixings (3 gravity hold open hinges per door)
- Aluminium anodised extrusions
- Overall system height 2400 – 3000mm AFFL
- Complies with NCC 2015 Building Code of Australia – Volume One

## HOW TO SPECIFY

### Product:

Duracube® 3000 Series Full Height - Unisex Ultra (3UU)

### Board Selection:

- Doors: Durasafe®, antibacterial 13mm compact laminate
- Divisional panels/frontals: antibacterial 13mm compact laminate

### Hardware:

Viva Satin Chrome Hardware or any custom hardware as per page 26

### Ceiling Mounting:

20 x 30mm anodised aluminium C channel fixed to the ceiling

### Floor Mounting:

Nibs fixed with 40 x 12mm anodised aluminium

## BENEFITS

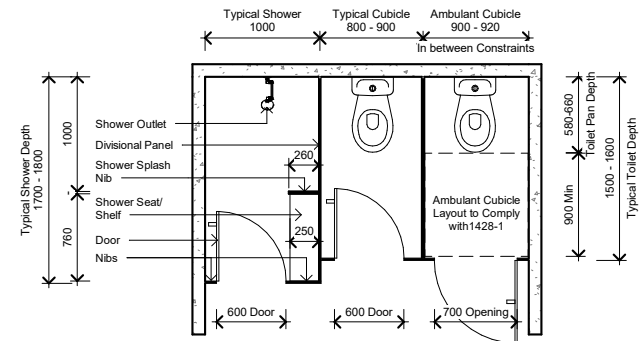
- Can be used in areas exposed to hose cleaning e.g shower areas
- Reduces maintenance
- Waterproof
- Vandal resistant
- Impact resistant surface
- No edge strip

## APPLICATION

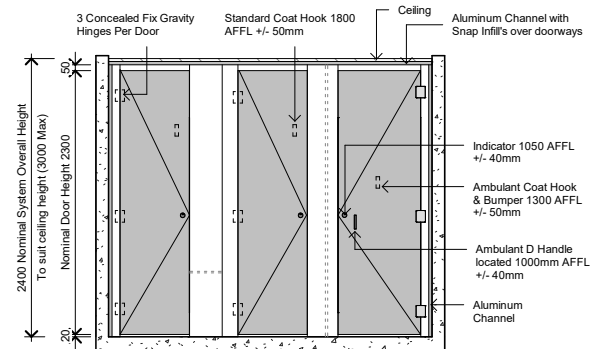
- Unisex/ gender neutral bathrooms
- Schools and Universities
- End of trip (EOT) facilities
- Shopping Centres
- Sporting and Gym Change Rooms
- Factory toilets
- Ablution blocks
- Corporate office amenities



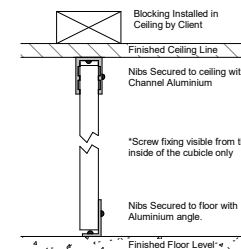
## TYPICAL FLOOR PLAN



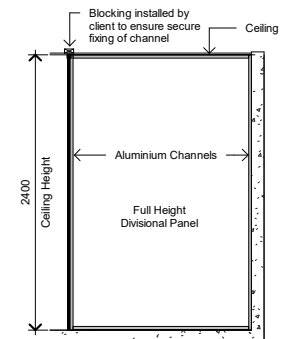
## TYPICAL ELEVATION



## FLOOR & CEILING FIXING DETAIL



## TYPICAL SECTION



# VANITIES (3VAN)



# VANITIES (3VAN)

## FEATURES

- Constructed out of antibacterial 13mm compact laminate chosen from 35 + colours
- 100% Waterproof design, no swelling after install
- Can be matched to your partitioning system

## BENEFITS

- Prefabricated with basin cut out prior to install, reducing time onsite
- No swelling when in contact with water
- Available in full range of compact laminate colours
- Hides drainage

## HOW TO SPECIFY

### Product:

Duracube® Vanities (3VAN)

### Board Selection:

Duracube® 13mm compact laminate

### Wall Fixing:

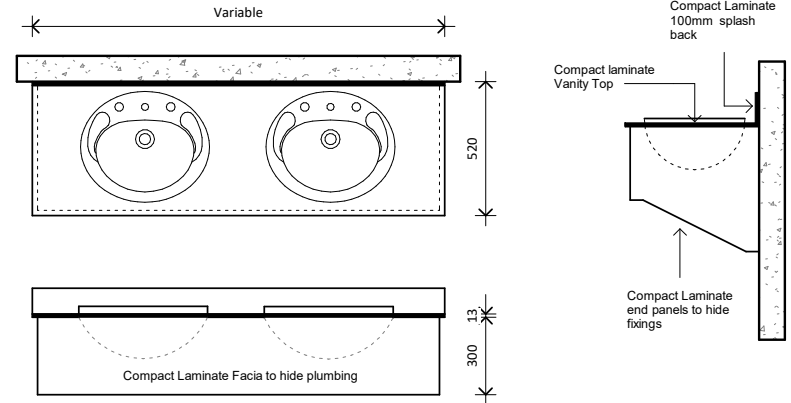
Custom Duracube® Bracket

## SUITABLE FOR

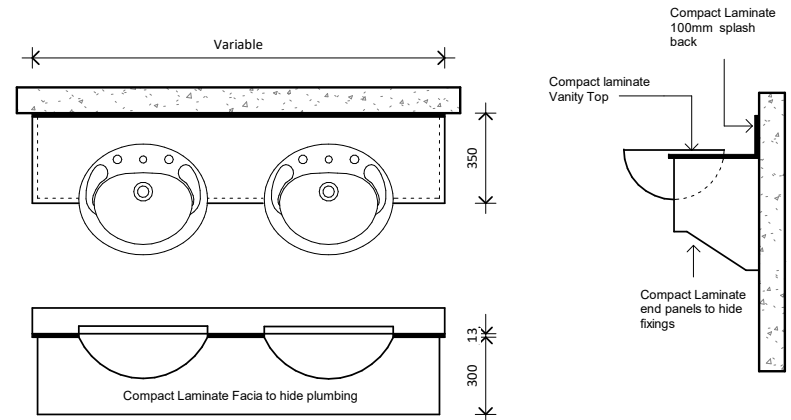
- Recreational Amenities
- Schools/Universities
- Entertainment Centres
- Public Amenities
- Shopping Centres
- Sporting and Gym Change Rooms



## INSET BASIN DESIGN 520



## SEMI RECESSED BASIN DESIGN 350





# DURALOC® LOCKERS (3LOC)

## STANDARD HARDWARE COMPONENTS



Key Lock &  
Numbering



Shallow Cup  
Hinge



Ventilation  
Slot

## ALTERNATE LOCK OPTIONS



KL 1000  
Electronic  
Code Lock



9 Digit Duraloc®  
Electronic  
Code Lock



9 Digit Duraloc®  
RFID + Electronic  
Code Lock

# DURALOC® LOCKERS (3LOC)

## FEATURES

- Doors and panels constructed using antibacterial 13mm compact laminate. Available in 35+ colours
- Door colours can be mixed up to 4 colours to create a pattern
- Panels constructed using White 16mm HMR Board (water resistant) or 16mm PVC Board (100% waterproof)
- Mounted on 100mm Kicker or wall hung with or without wall seating
- Black PVC edge tape on carcass to match black core on antibacterial 13mm compact laminate panels & doors.
- Four lock options available. See page 18 for details.
- Shelving and vents as per detail drawing
- Coat rail in 1 door, 2 door and L door lockers

## HOW TO SPECIFY

### Product:

Duracube® 3000 Series Duraloc® Locker Systems or Duracube® 3000 Series Duraloc® Locker Systems with Seating

### Board Selection:

- Doors & panels: Durasafe® antibacterial 13mm compact laminate
- Carcass: White 16mm HMR (dry area lockers) or white 16mm PVC board (wet area lockers)

### Hardware:

Standard key lock or any alternate lock option as per page 18

## BENEFITS

- Can be used in wet areas e.g shower areas
- Minimal maintenance required
- 5 Different door layout options e.g. 1 door or 4 door lockers per unit
- Impact resistant surface
- No strip on doors and panels
- Waterproof or water resistant options

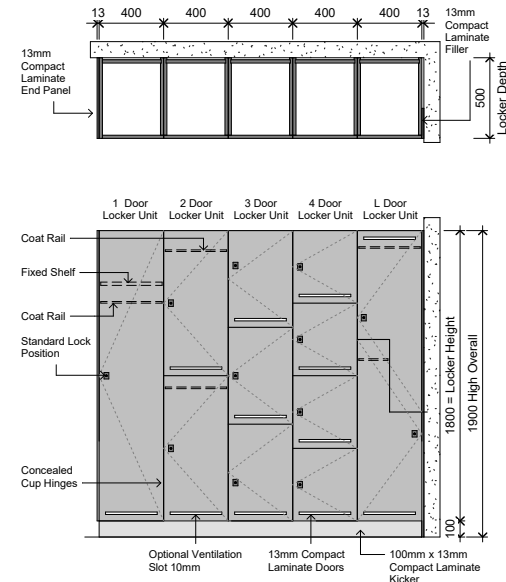
## APPLICATION

- Recreational/sporting Amenities
- Schools/Universities
- End of trip (EOT) facilities
- Sporting and Gym Change Rooms
- Factory Change Rooms
- Corporate office amenities

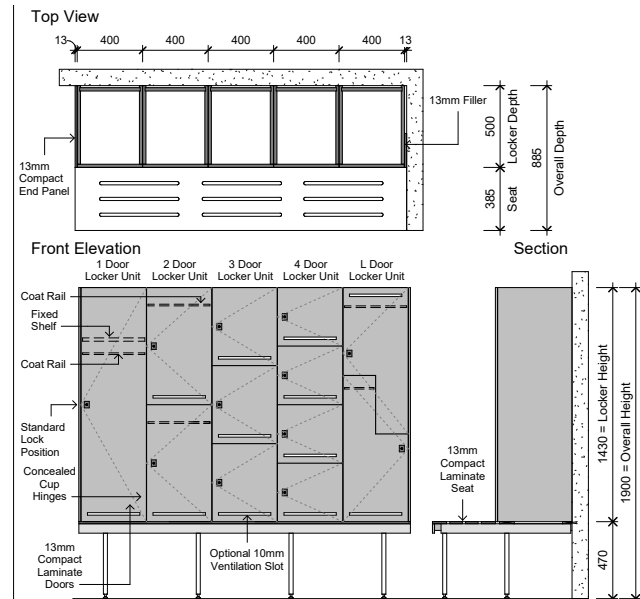


## TECHNICAL DRAWINGS

### LOCKERS WITHOUT BENCH SEATING



### LOCKERS WITH BENCH SEATING



# PRIVACY PANELS (3PP)

## STANDARD HARDWARE COMPONENTS



Pedestal Leg



Ceiling Mount  
30x20 C Channel



40 x 40 Post

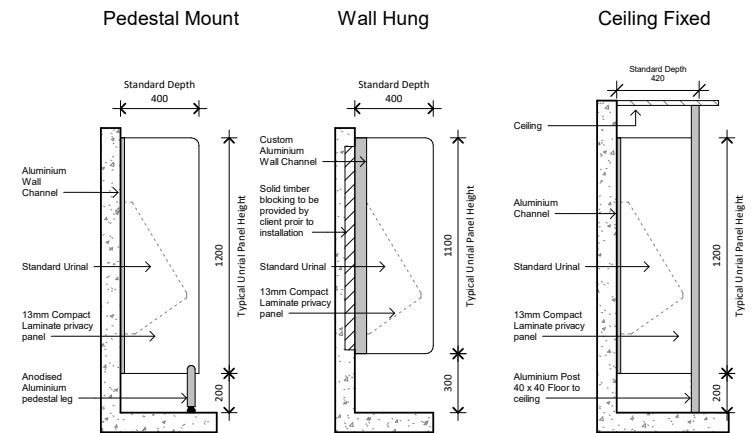
## FEATURES

- Constructed using antibacterial 13mm compact laminate.
- Available with or without floor mounting
- Aluminium anodised extrusions with stainless steel fixings
- Suitable for general privacy

## BENEFITS

- Easy to install
- Unobtrusive
- Wide range of colours matching your partition system
- Easy to clean finish
- Attractive corporate appearance

## TECHNICAL DRAWINGS



## HOW TO SPECIFY

### Product:

Duracube® Privacy Panels (3PP), with system (i.e. 3PP Pedestal Mount, 3PP Wall Hung or 3PP Ceiling Fixed)

### Board Selection:

Durasafe® antibacterial 13mm compact laminate

### Wall Fixing:

Aluminium Channel

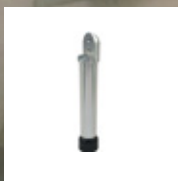
### Floor Mounting:

200mm Aluminium Pedestal Leg or Wall Hung, or 40mm Square Post

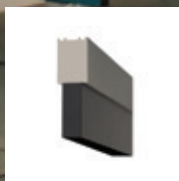


# CHILDCARE PRIVACY PANELS (3CPP)

## STANDARD HARDWARE COMPONENTS



Pedestal Leg



Ceiling Mount  
30x20 C Channel



40 x 40 Post

PANELS: 464 BARRIER REEF, 259 GREEN APPLE

## FEATURES

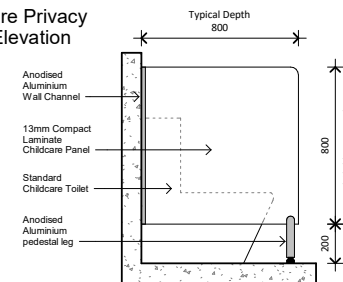
- Constructed using 13mm compact laminate.
- Fixed to floor with 200mm Aluminium Legs, same as 3POB
- Aluminium anodised extrusions with stainless steel fixings
- Suitable for Childcare toilets

## BENEFITS

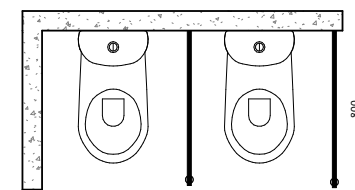
- Easy to install
- Unobtrusive
- Wide range of colours matching your partition system
- Easy to clean finish
- Attractive appearance

## TECHNICAL DRAWINGS

Childcare Privacy Panel Elevation



Childcare Privacy Panel Plan View



## HOW TO SPECIFY

### Product:

Duracube® Childcare Privacy Panels (3CPP)

### Board Selection:

Duracube® 13mm compact laminate

### Wall Fixing:

30x20 Aluminium C Channel

### Floor Mounting:

200mm Aluminium Pedestal leg





# BENCH SEATING (3BS)



## STANDARD HARDWARE COMPONENTS



Coat Hook



Single Seat  
Frame



Double Seat  
Frame

# BENCH SEATING

## FEATURES

- Incorporates antibacterial 13mm compact laminate
- Sturdy powder coated grey frames
- Most cost effective when designed in 1800mm and 1200mm lengths
- Available in island or wall fixed configurations
- Coat hooks and rail included above bench seating to match

## HOW TO SPECIFY

### Product:

Duracube® Bench Seating (3BS) - Wall Seating or Duracube® Bench Seating (3BS) - Island Seating

### Seating Tops & Coat Hooks:

- Durasafe® antibacterial 13mm compact laminate

### Frame Finish:

Powder-coated Pearl Grey

## BENEFITS

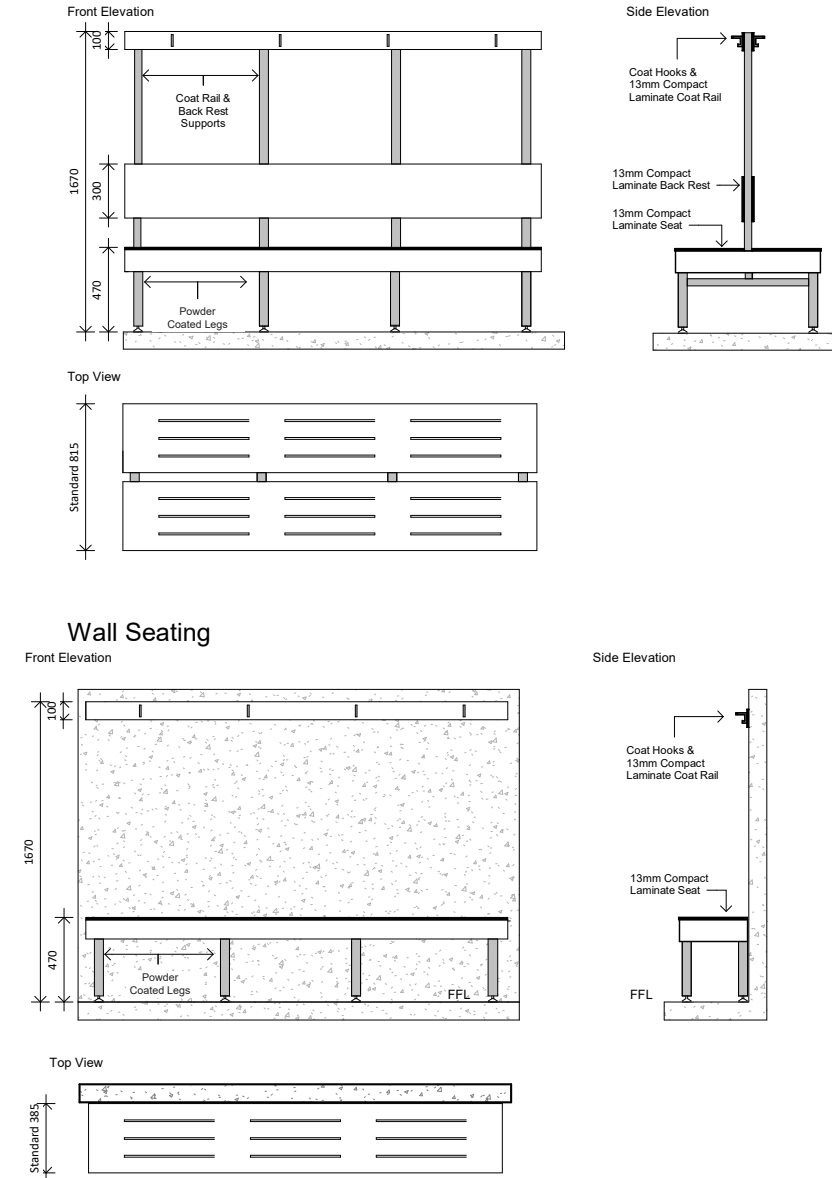
- Little maintenance is required to retain the fresh appearance of the laminated décor
- Vandal resistant
- Easy to clean and maintain
- Range of colours to match partition systems
- Suited for areas that are hose cleaned

## SUITABLE FOR

- Aquatic Centres
- End of trip facilities
- Schools
- Sport Facilities
- Gyms



## TECHNICAL DRAWINGS







# CUSTOMISE YOUR PROJECT WITH COLOURS

We house a comprehensive range of stock colours to choose from, but if this selection isn't what you're after, we've got 60+ colours we can get in specifically for your project!

# CUSTOMISE YOUR PROJECT WITH PRIVACY EDGING

Privacy edge can be added to all Duracube® partition systems for superior privacy. Supports zero door gaps and keeps bullying at bay in education environments. Providing one of the most private solutions in the industry when combined with Duracube's full height toilet & shower partitions system.

## TOP VIEW

1 



2 



# CUSTOMISE YOUR PROJECT WITH HARDWARE

Any of the below hardware can be added to your project to create your own design.

## VIVA SATIN CHROME HARDWARE (STANDARD HARDWARE)

						
Standard Lock & Indicator	Ambulant Lock & Indicator	Ambulant D Handle	Gravity Hinge 3 per door	Door Stop & Coat Hook	Bumper	Pedestal Leg








## ZETLAN SATIN CHROME HARDWARE (OPTIONAL UPGRADE)

				
Ambulant Lock & Indicator	Ambulant D Handle	Gravity Hinge 3 per door	Door Stop & Coat Hook	Bumper

## BOLT THROUGH HARDWARE

		
Hinge Bolt Through Cover Plate	Bumper Bolt Through Cover Plate	Staple Bolt Through Cover Plate

## ZETLAN BLACK HARDWARE (OPTIONAL UPGRADE)

						
Ambulant Lock & Indicator	Ambulant D Handle	Gravity Hinge 3 per door	Door Stop & Coat Hook	Bumper	Pedestal Legs	Black Channel

\*Viva and Zetlan hardware can be upgraded to spring hinges upon request.



# CUSTOMISED PROJECT INSPIRATION

We know designing a commercial bathroom can often be daunting, so we've made this process easier for you with our quality publication of Duracube® inspired bathrooms.

Contact us to grab your copy.



**CALL US TODAY AND FIND OUT  
HOW YOUR NEXT PROJECT CAN  
BE ANOTHER SUCCESS!**



For further information  
and pricing  
**call 1300 387 228**  
or visit  
**[www.duracube.com.au](http://www.duracube.com.au)**



All products within this brochure have been photographed to depict accurate shape, colour, texture and detail, however the products may look different in various conditions.

Please see a copy of the Duracube® terms, conditions and warranty details for more information (available at [duracube.com.au](http://duracube.com.au)).