

# COLOUR CHART

## DURASAFE® ANTIBACTERIAL 13MM COMPACT LAMINATE

**10** | **YEAR**  
LIMITED  
WARRANTY



**ANTIBACTERIAL**



**ANTIFUNGAL**



**NEW**

**ANTIVIRAL**

Invisible to the naked eye, harmful bacteria are on most surfaces that our hands come into contact with on a daily basis. These bacteria breach our immune system, break down defences and attack good body cells which we need to fight off illness and disease.

This is why Duracube® has introduced our Durasafe® range.

Durasafe® is an antibacterial, antifungal and now also antiviral range of compact laminate that gives you the power to eliminate almost 99% of common bacteria. This is not only the most advanced and protective laminate in Australia but the world over.

Now with Durasafe® antibacterial, antifungal and antiviral compact laminates, you can continue your healthy lifestyle knowing you have done everything you can to keep you and your loved ones protected.

- ✓ **EASY TO CLEAN**
- ✓ **WATERPROOF**
- ✓ **DURABLE**

FIND OUT MORE

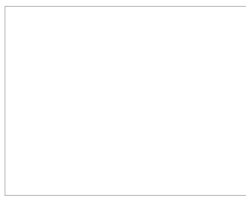


**DURASAFE® WILL KEEP OUR ENVIRONMENT  
GREEN AND YOUR ENVIRONMENT SAFE!**

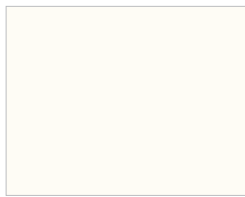


## COLOUR OPTIONS

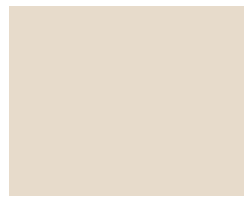
### MATT FINISH



111 Artic White



113 Off White



133 Almond



275 Classic Grey



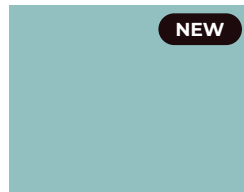
268 Evening



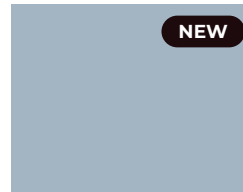
259 Green Apple



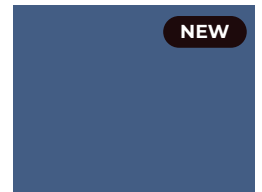
464 Barrier Reef



290 Marine



289 Dusk



297 Deep Water



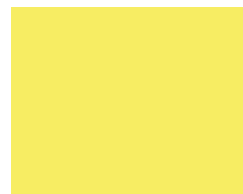
291 Royal Blue



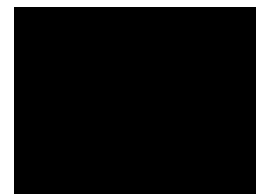
204 Red Apple



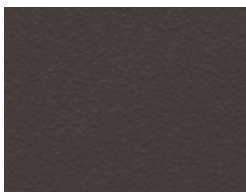
217 Sunset



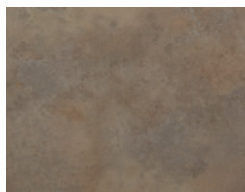
229 Sunshine



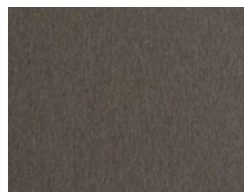
401 Midnight



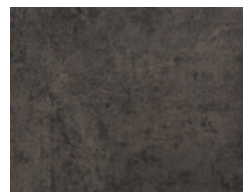
279 Charcoal



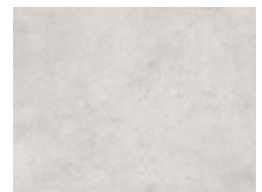
5853 Lunar Rock



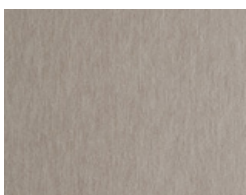
5730 Brushed Graphite



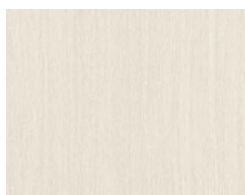
5578 Slate



5577 Concrete



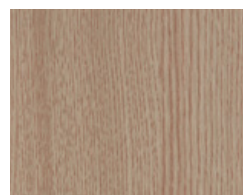
923 Brushed Grey



9610 Pure Ash



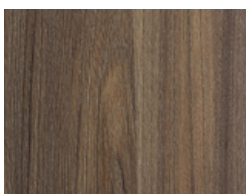
5427 Refresh Oak



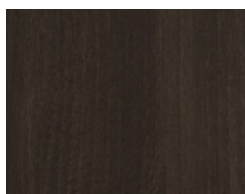
738 Oak



5003 Phillipine Teak



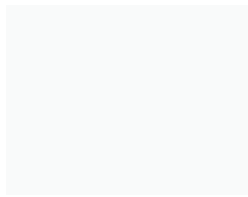
5353 Rosenheim Elm



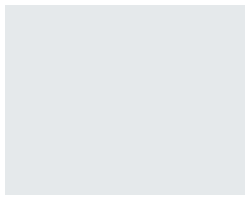
5331 Midnight Acacia



## COLOUR OPTIONS



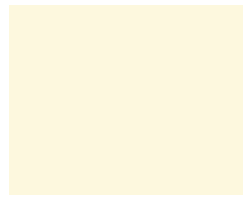
116 Oyster White



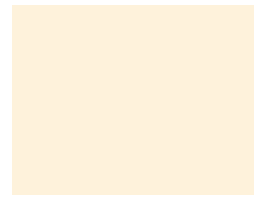
271 Overcast



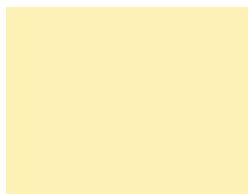
284 Sky



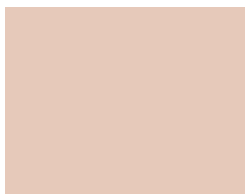
124 Sand Dune



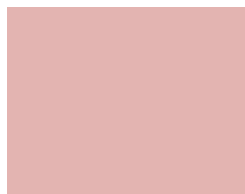
121 Rich Cream



230 Wheat



141 Riverstone



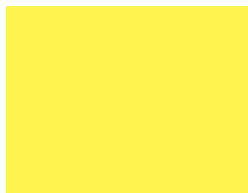
166 Rose Pink



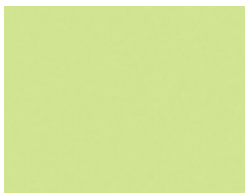
173 Hot Pink



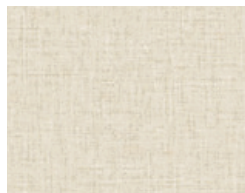
215 Carrot



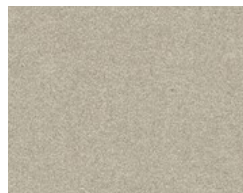
231 Canary



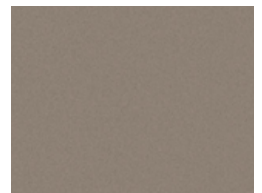
257 Rolling Plains



5566 Clear Mesh



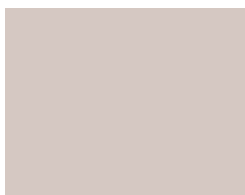
929 Metallic Grey



5787 Terra Firma



212 Lavender



149 Hogs Bristle



163 Mushroom



264 Eastern Brown



261 Steel



134 Brown Khaki



682 Hiland Pine



5006 Thansau Maple



770 Douglas Fir



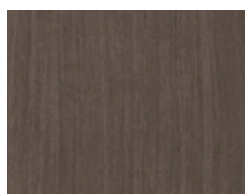
719 Mangfall Beach



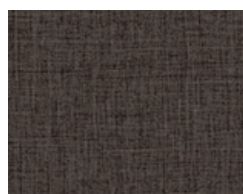
552 Hickory Oak



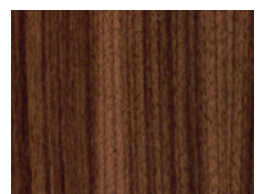
5076 Primeval Oak



9611 Innate Ash



5568 Smoky Mesh



5018 Brooks Walnut



749 Sapele



5061 Fine Wenge



# NON-STOCK OPTIONS

## FINISH OPTIONS



	Matt Finish	Gloss Finish	Raw Oak Finish
Stocked Colours Available * (page 3)	27	-	-
Non-Stock Colours Available ** (page 4)	32	59	59

## CORE OPTIONS



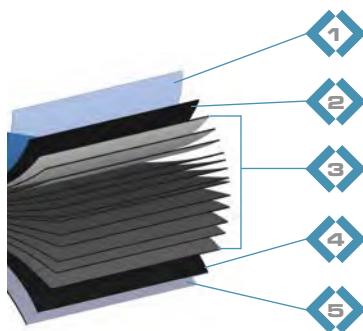
	Standard Core	Coloured Core	Multi Core
Stocked Colours Available *(page 3)	27	-	-
Non-Stock Colours Available ** (page 4)	32	59	59

\* Stocked colours – standard lead-time applies.

\*\* Non-stock colours – additional 10 week lead-time applies. Additional surcharge applies. Minimum order quantity may apply per colour.



# DURASAFE® PROTECTION LAYER BY LAYER BREAKDOWN



	OTHER COMPACT LAMINATES	DURASAFE® COMPACT LAMINATE
<b>1 Top Layer Tissue Paper</b>	Treated with Melamine Resin only	Treated with Melamine Resin + High-efficiency Anti-Microbial Agents
<b>2 2nd Layer Decorative Design Paper</b>	Treated with Melamine Resin only	Treated with Melamine Resin + High-efficiency Anti-Microbial Agents
<b>3 Layers Kraft/Brown Paper</b>	Treated with Phenolic Resin	Treated with Phenolic Resin + High-efficiency Anti-Microbial Agents
<b>4 2nd Last layer Decorative/Design Paper</b>	Treated with Melamine Resin only	Treated with Melamine Resin + High-efficiency Anti-Microbial Agents
<b>5 Bottom Layer Tissue Paper</b>	Treated with Melamine Resin only	Treated with Melamine Resin + High-efficiency Anti-Microbial Agents

## TECHNICAL SPECIFICATIONS VS STANDARDS

Properties	Unit	Specified values as per DIN EN 438,BSEN & IS 2046:1995	Durasafe® Typical Value
Thickness tolerance	mm	13.0 ± 0.5	13.0 ± 0.28
Resistance to dry heat at 180°C	Grade	Not worse than 4	5
Resistance to surface water	Rev	350 (Min)	400
Resistance to immersion in boiling water			
a) Mass Increase	%	2.0 (Max)	0.5
b) Thickness	%	2.0 (Max)	0.7
c) Appearance	Grade	Not worse than 4	5
Dimensional stability at deviated temperature			
a) Longitudinal	%	0.06 (Max)	0.03
b) Transverse	%	0.53 (Max)	0.12
Dimensional stability at 20°C			
c) Longitudinal	%	0.16 (Max)	0.08
d) Transverse	%	0.28 (Max)	0.13
Resistance to impact by a large diameter ball			
a) Drop height	mm	1800	2000
b) Diameter of indentation	mm	10 (Max)	2
Resistance to scratching	N	2.0 (Min)	2.5
Resistance to staining			
a) Group 1 & 2	Grade	Not worse than 5	6
b) Group 3 & 4	Grade	Not worse than 4	5
Resistance to colour change			
a) In xerox arc light	Grade	Not worse than 6	6
b) In enclosed carbon arc light	Grade	Not worse than 5	5
Resistance to cigarette burns	Grade	Not worse than 3	4
Resistance to steam	Grade	Not worse than 4	5
Resistance to crazing	Grade	Not worse than 4	5
Resistance to moisture	Grade	Not worse than 4	5
Flexural modulus	Mpa	1000 (Min)	11000
Flexural strength	Mpa	100 (Min)	120
Tensile strength	Mpa	70 (Min)	90
Density	g/cm3	1.35	1.40
NCC/BCA Fire Group Number when tested in accordance with AS3837	Group	3	3

**For further information and pricing call  
1300 DURACUBE or visit [www.duracube.com.au](http://www.duracube.com.au)**

Please Note: The colour range on this chart has been matched as closely as 4 colour printing will allow.  
This colour card should be used as a guide only.