

PRODUCT BROCHURE

**Toilet & Shower Partitioning,
Lockers, Vanity Benches &
Bench Seating Solutions**



Edition 1.1 - 2022

Everyone deserves a better washroom experience – we know this. That incorporates everyone from the design stage of a washroom right through to installation and the user experience. That's what we're here to create. **Passion and expertise delivering a superior washroom experience.**

We also know the washroom is one of the biggest pain points of the construction industry and it's often the most criticised aspect of any project. Understanding these frustrations has helped us develop the perfect solution to provide you with the fastest and most satisfying results.

We're a tight-knit team from a family business that cares. The team behind Duracube® has been providing the construction industry with washroom products and services since the 1980's. The Duracube® division was started in 2012 when the owners saw a need in the market for a superior toilet cubicle range which can be utilised in a range of facilities such as council owned buildings, education spaces, corporate offices, leisure centres, hospitality and public spaces. We work with architects, designers and builders to custom design their washrooms.

Our Duracube® antibacterial 13mm compact laminate is stocked and machined in our factory in Sydney, custom made to your specific needs and is shipped Australia wide ready for installation. We're backed with a team of installers and a network of distributors ensuring our product can be installed anywhere Australia-wide.

**CALL US TODAY AND FIND OUT
HOW YOUR NEXT PROJECT
CAN BE ANOTHER SUCCESS!**



OUR SOLUTIONS

At Duracube® we provide our clients with durable, robust, and practical antibacterial 13mm compact laminate toilet and shower partition systems. We also have a full range of custom-made bathroom/wet area products including bench seating, lockers, privacy panels and vanities that can be combined with our partition systems to transform your wet area.

DURACUBE® 3000 SERIES TOILET PARTITIONING SYSTEMS

The Duracube® 3000 Series offers low maintenance antibacterial toilet partitioning systems, designed specifically for high use wet areas. We understand every space is unique, so we've developed six common partitioning systems that are manufactured inhouse within only 3 weeks. We specialise in meeting your exact requirements, which is why we also offer customised solutions to help you create the perfect washroom!

DURACUBE® VANITIES (3VAN)

Duracube® antibacterial 13mm compact laminate vanity benches are a stylish addition to any wet area, to hide drainage and match your partitioning system.

DURACUBE® LOCKERS (3LOC)

Our lockers are constructed of antibacterial 13mm compact laminate, providing a practical design layout with a waterproof, low maintenance and impact resistant finish. What's more, we can match the doors of your lockers to your partitioning system!

DURACUBE® PRIVACY PANELS (3PP)

A versatile screening solution made of antibacterial 13mm compact laminate, Duracube's privacy panels provide added privacy in open plan bathrooms. Privacy panels are often utilised between individual urinals or as a substitute for an airlock.

DURACUBE® CHILDCARE PRIVACY PANELS (3CPP)

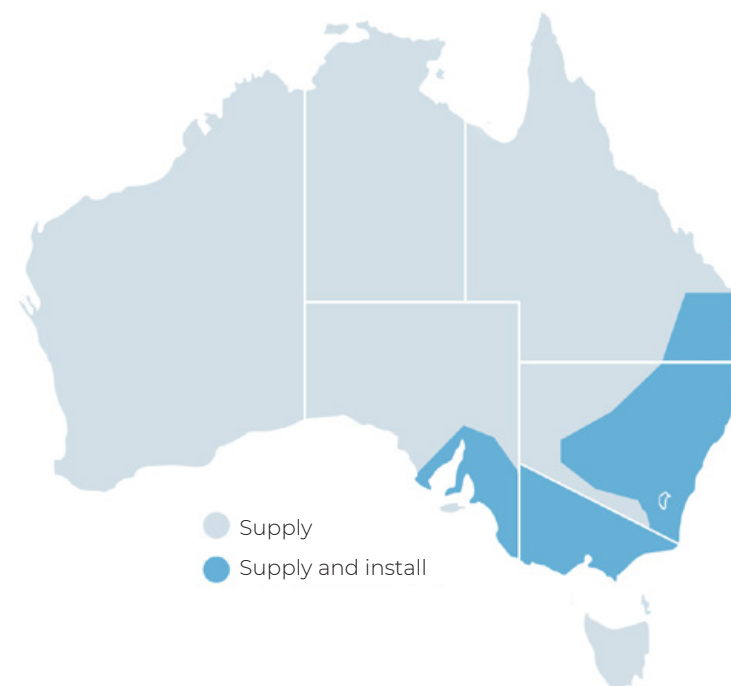
Durasafe® antibacterial 13mm compact laminate childcare privacy panels are often used as dividers between toilets at preschools and early learning centres.

DURACUBE® BENCH SEATING (3BS)

The Duracube® bench seating systems are created to compliment your partition system with a low maintenance, attractive design.

WHERE WE SERVICE

Our Durasafe® antibacterial 13mm compact laminate is stocked and machined in our factory in Sydney, custom made to your specific needs and is shipped Australia wide ready for installation. We foster and rely on repeat business and are proud of our growing customer base covering all areas in Victoria, New South Wales, Australian Capital Territory, Tasmania and Queensland. We're backed with a team of installers in Sydney Metro, Regional NSW, Canberra, Melbourne and Adelaide.



10 | **YEAR**
LIMITED
WARRANTY

PEDESTAL MOUNT OVERHEAD BRACED (3POB)

STANDARD HARDWARE COMPONENTS VIVA SATIN CHROME HARDWARE



Standard Lock
& Indicator



Ambulant Lock
& Indicator



Ambulant
D Handle



Gravity Hinge
3 per Door



Door Stop &
Coat Hook



Bumper



Pedestal Leg



Square Headrail

3000 SERIES PEDESTAL MOUNT OVERHEAD BRACED (3POB)

FEATURES

- One of the most economical systems available in the range. Designed to minimise wastage and install time
- Constructed using antibacterial 13mm compact laminate
- Mounted on aluminum pedestal legs (standard 200mm high)
- Black Core visible on edges
- Viva satin chrome cast alloy hardware with concealed stainless steel fixings (3 gravity hold open hinges per door)
- Grey Powder Coated Aluminium extrusions

HOW TO SPECIFY

Product:

Duracube® 3000 Series Pedestal Mounted Overhead Braced System (3POB)

Board Selection:

- Doors: Durasafe®, antibacterial 13mm compact laminate
- Divisional panels/frontals: antibacterial 13mm compact laminate

Hardware:

Viva Satin Chrome Hardware or any custom hardware as per page 26

Headrail:

Square profile

Floor Mounting:

Adjustable 200mm aluminium pedestal legs

BENEFITS

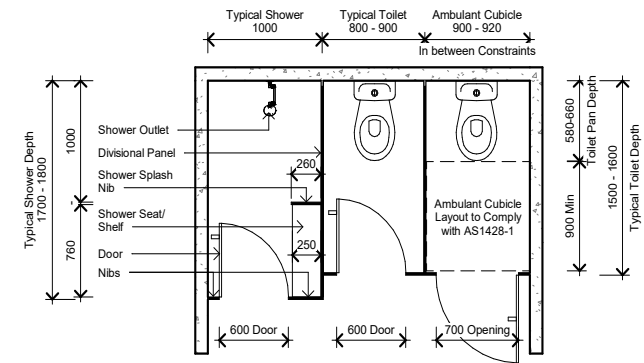
- Can be used in areas exposed to hose cleaning e.g shower areas
- Reduces maintenance
- Waterproof
- Vandal resistant
- Easy install
- Impact resistant surface
- No edge strip

APPLICATION

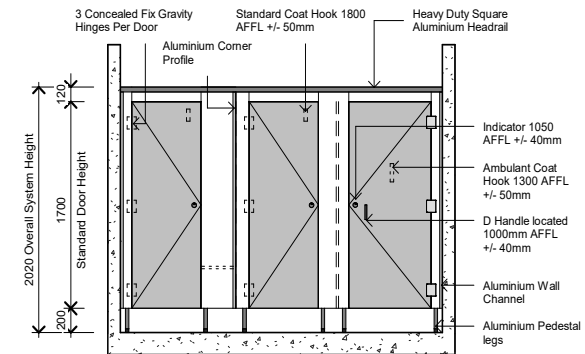
- Recreational Amenities
- Schools and Universities
- Pubs and Clubs
- Shopping Centres
- Sporting and Gym Change Rooms
- Factory toilets
- Ablution blocks
- Corporate office amenities



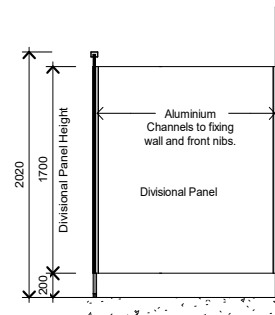
TYPICAL FLOOR PLAN



TYPICAL ELEVATION



TYPICAL SECTION

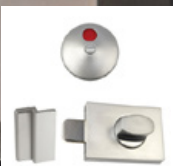


OPTIONAL SET BACK PEDESTAL



FLOOR MOUNT OVERHEAD BRACED (3FOB)

STANDARD HARDWARE COMPONENTS VIVA SATIN CHROME HARDWARE



Standard Lock
& Indicator



Ambulant Lock
& Indicator



Ambulant
D Handle



Gravity Hinge
3 per Door



Door Stop &
Coat Hook



Bumper



Floor Mounting
40x12 Angle



Square Headrail

3000 SERIES FLOOR MOUNT OVERHEAD BRACED (3FOB)

FEATURES

- Constructed using antibacterial 13mm compact laminate
- Nibs mounted directly to floor with aluminium trim
- Black Core visible on edges
- Viva satin chrome cast alloy hardware with concealed stainless steel fixings (3 gravity hold open hinges per door)
- Grey Powder Coated Aluminium extrusions
- Overall system height 2000mm AFFL

HOW TO SPECIFY

Product:

Duracube® 3000 Series Floor Mounted Overhead Braced System (3FOB)

Board Selection:

- Doors: Durasafe®, antibacterial 13mm compact laminate
- Divisional panels/frontals: antibacterial 13mm compact laminate

Hardware:

Viva Satin Chrome Hardware or any custom hardware as per page 26

Headrail:

Square profile

Floor Mounting:

Nibs fixed with 40 x 12mm grey powder coated aluminium or optional skirt mount.

BENEFITS

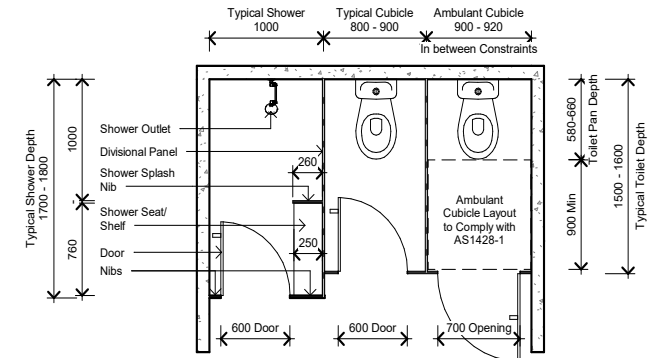
- Can be used in areas exposed to hose cleaning e.g shower areas
- Reduces maintenance
- Waterproof
- Vandal resistant
- Impact resistant surface
- No edge strip
- Direct fixing to floor ensures stability and strength

APPLICATION

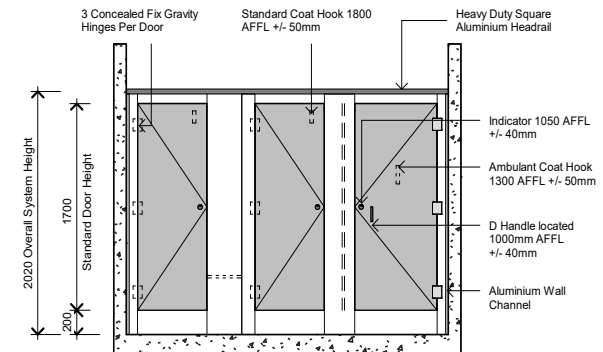
- Recreational Amenities
- Schools and Universities
- Pubs and Clubs
- End of trip (EOT) facilities
- Shopping Centres
- Sporting and Gym Change Rooms
- Factory toilets
- Ablution blocks
- Corporate office amenities



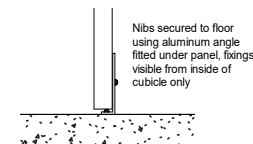
TYPICAL FLOOR PLAN



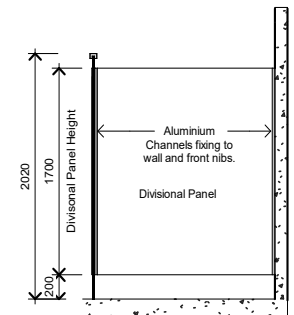
TYPICAL ELEVATION



FLOOR & CEILING FIXING DETAIL



TYPICAL SECTION



FLOOR MOUNT CEILING FIXED (3FCF)

STANDARD HARDWARE COMPONENTS

VIVA SATIN CHROME HARDWARE



Standard Lock
& Indicator



Ambulant Lock
& Indicator



Ambulant
D Handle



Gravity Hinge
3 per Door



Door Stop &
Coat Hook



Bumper



Floor Mounting
40x12 Angle



Ceiling Mount
30x20 C Channel

3000 SERIES FLOOR MOUNT CEILING FIXED (3FCF)

FEATURES

- One of the strongest systems that can withstand large amounts of use
- Constructed using antibacterial 13mm compact laminate
- Nibs mounted directly to floor and ceiling with aluminium trims
- Black Core visible on edges
- Viva satin chrome cast alloy hardware with concealed stainless steel fixings (3 gravity hold open hinges per door)
- Grey Powder Coated Aluminium extrusions
- Overall system height 2400-3000mm AFFL

HOW TO SPECIFY

Product:

Duracube® 3000 Series Floor Mounted Ceiling Fixed System (3FCF)

Board Selection:

- Doors: Durasafe®, antibacterial 13mm compact laminate
- Divisional panels/frontals: antibacterial 13mm compact laminate

Hardware:

Viva Satin Chrome Hardware or any custom hardware as per page 26

Ceiling Mounting:

20 x 30mm grey powder coated aluminium C channel fixed to the ceiling

Floor Mounting:

Nibs fixed with 40 x 12mm grey powder coated aluminium

BENEFITS

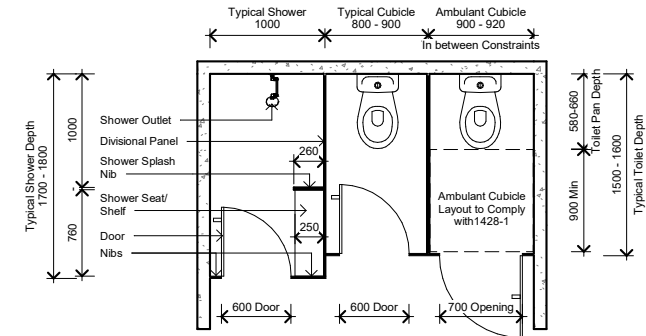
- Can be used in areas exposed to hose cleaning e.g shower areas
- Reduces maintenance
- Waterproof
- Vandal resistant
- Impact resistant surface
- No edge strip
- Direct fixing to floor and ceiling ensures stability

APPLICATION

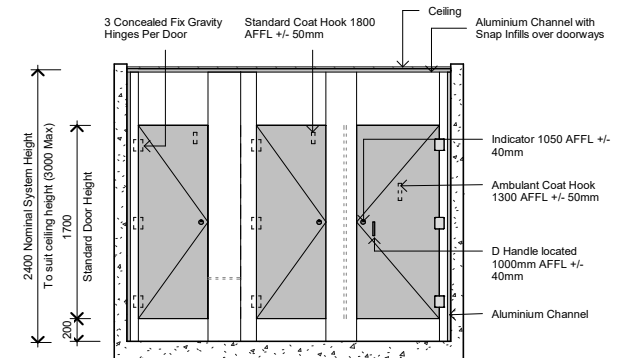
- Recreational Amenities
- Schools and Universities
- Pubs and Clubs
- End of trip (EOT) facilities
- Shopping Centres
- Sporting and Gym Change Rooms
- Corporate office amenities



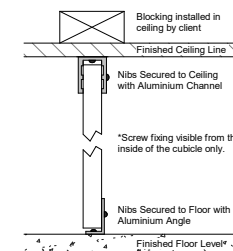
TYPICAL FLOOR PLAN



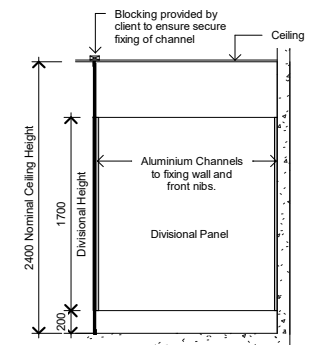
TYPICAL ELEVATION



FLOOR & CEILING FIXING DETAIL



TYPICAL SECTION



FLOOR MOUNT FREE STANDING (3FFS)

NEW
SYSTEM



STANDARD HARDWARE COMPONENTS

VIVA SATIN CHROME HARDWARE



Standard Lock
& Indicator



Ambulant Lock
& Indicator



Ambulant
D Handle



Gravity Hinge
3 per Door



Door Stop &
Coat Hook



Bumper



Skirt Mount

3000 SERIES FLOOR MOUNT FREE STANDING (3FFS)

FEATURES

- Constructed using 13mm compact laminate
- Nibs mounted directly to floor with aluminium trim (can only be installed with concrete sub floor and fixings will penetrate the water proofing)
- Black Core visible on edges
- Viva satin chrome cast alloy hardware with concealed stainless steel fixings (3 gravity hold open hinges per door)
- Grey Powder Coated Aluminium extrusions and floor mount
- Overall system height 1900mm AFFL

HOW TO SPECIFY

Product:

Duracube® 3000 Series Floor Mounted Free Standing System (3FFS)

Board Selection:

- Doors: Durasafe®, 13mm compact laminate
- Divisional panels/frontals: 13mm compact laminate

Hardware:

Viva Satin Chrome Hardware or any custom hardware as per page 26

Floor Mounting:

Custom grey powder coated aluminium skirt mount

BENEFITS

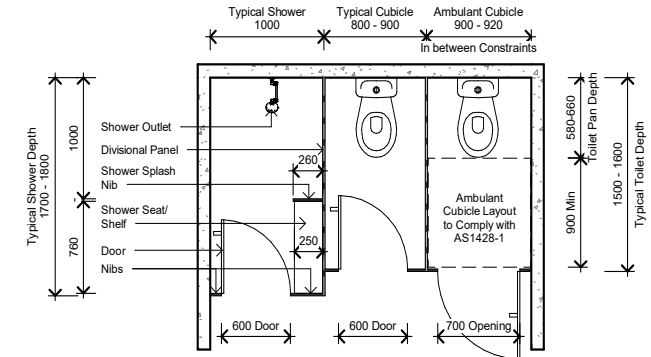
- Super sleek design
- Can be used in areas exposed to high moisture
- Waterproof
- Impact resistant surface
- No edge strip
- No headrail or fixing to the ceiling

APPLICATION

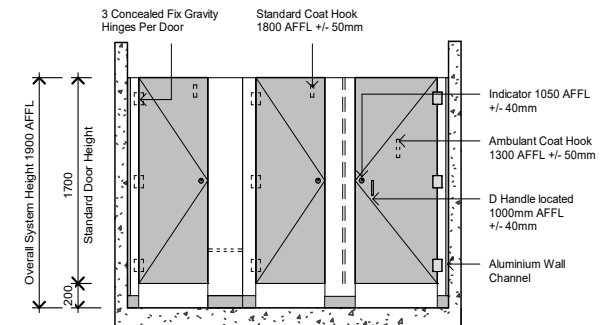
- Low traffic areas
- Corporate office amenities



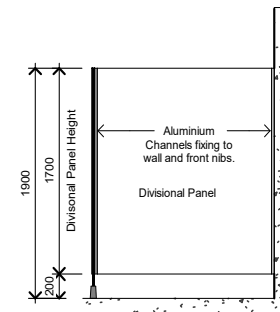
TYPICAL FLOOR PLAN



TYPICAL ELEVATION



TYPICAL SECTION



FULL HEIGHT UNISEX CORE (3UC)

NEW
SYSTEM

STANDARD HARDWARE COMPONENTS

VIVA SATIN CHROME HARDWARE



Standard Lock
& Indicator



Ambulant Lock
& Indicator



Ambulant
D Handle



Gravity Hinge
3 per Door



Door Stop &
Coat Hook



Bumper



Floor Mounting
40x12 Angle



Ceiling Mount
30x20 C Channel



3000 SERIES FULL HEIGHT UNISEX CORE (3UC)

FEATURES

- Designed to maximise privacy with little or no gaps under panels
- Unisex system includes the Duracube® Privacy Edge as standard detail, eliminating the gap between doors and nibs
- Constructed using antibacterial 13mm compact laminate
- Nibs and divisional panels fixed directly to floor and ceiling to maximise privacy
- Black Core visible on edges
- Viva satin chrome cast alloy hardware with concealed stainless steel fixings (3 gravity hold open hinges per door)
- Grey Powder Coated Aluminium extrusions
- Overall system height 2400 – 3000mm AFFL
- Complies with NCC 2015 Building Code of Australia – Volume One
- Optional ventilation slots available on panel above door

HOW TO SPECIFY

Product:

Duracube® 3000 Series Full Height - Unisex Core (3UC)

Board Selection:

- Doors: Durasafe®, 13mm compact laminate
- Divisional panels/frontals: 13mm compact laminate

Hardware:

Viva Satin Chrome Hardware or any custom hardware as per page 26

BENEFITS

- Can be used in areas exposed to hose cleaning e.g shower areas
- Reduces maintenance
- Waterproof
- Vandal resistant
- Impact resistant surface
- No edge strip

APPLICATION

- Unisex/ gender neutral bathrooms
- Schools and Universities
- End of trip (EOT) facilities
- Shopping Centres
- Sporting and Gym Change Rooms
- Factory toilets
- Ablution blocks
- Corporate office amenities

Ceiling Mounting:

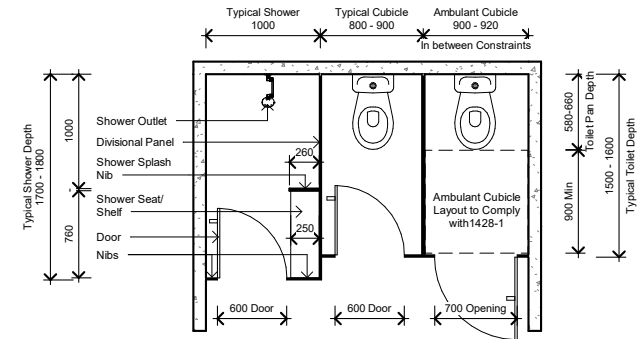
20 x 30mm grey powder coated aluminium C channel fixed to the ceiling

Floor Mounting:

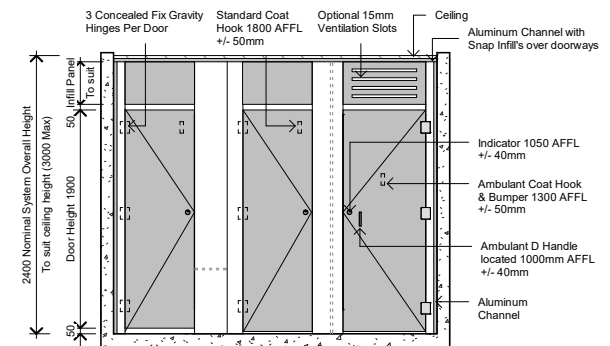
Nibs fixed with 40 x 12mm grey powder coated aluminium



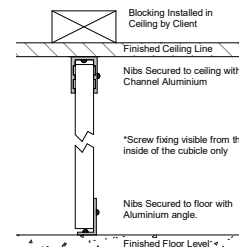
TYPICAL FLOOR PLAN



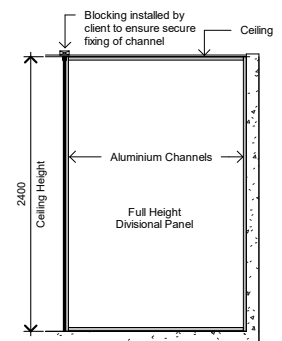
TYPICAL ELEVATION



FLOOR & CEILING FIXING DETAIL



TYPICAL SECTION



FULL HEIGHT UNISEX ULTRA (3UU)

STANDARD HARDWARE COMPONENTS VIVA SATIN CHROME HARDWARE



Standard Lock
& Indicator



Ambulant Lock
& Indicator



Ambulant
D Handle



Gravity Hinge
3 per Door



Door Stop &
Coat Hook



Bumper



Floor Mounting
40x12 Angle



Ceiling Mount
30x20 C Channel

3000 SERIES FULL HEIGHT UNISEX ULTRA (3UU)

FEATURES

- Designed to maximise privacy with little or no gaps under panels
- Unisex system includes the Duracube® Privacy Edge as standard detail, eliminating the gap between doors and nibs
- Constructed using antibacterial 13mm compact laminate
- Nibs and divisional panels fixed directly to floor and ceiling to maximise privacy
- Black Core visible on edges
- Viva satin chrome cast alloy hardware with concealed stainless steel fixings (3 gravity hold open hinges per door)
- Grey Powder Coated Aluminium extrusions
- Overall system height 2400 – 3000mm AFFL
- Complies with NCC 2015 Building Code of Australia – Volume One

HOW TO SPECIFY

Product:

Duracube® 3000 Series Full Height - Unisex Ultra (3UU)

Board Selection:

- Doors: Durasafe®, antibacterial 13mm compact laminate
- Divisional panels/frontals: antibacterial 13mm compact laminate

Hardware:

Viva Satin Chrome Hardware or any custom hardware as per page 26

BENEFITS

- Can be used in areas exposed to hose cleaning e.g shower areas
- Reduces maintenance
- Waterproof
- Vandal resistant
- Impact resistant surface
- No edge strip

APPLICATION

- Unisex/ gender neutral bathrooms
- Schools and Universities
- End of trip (EOT) facilities
- Shopping Centres
- Sporting and Gym Change Rooms
- Factory toilets
- Ablution blocks
- Corporate office amenities

Ceiling Mounting:

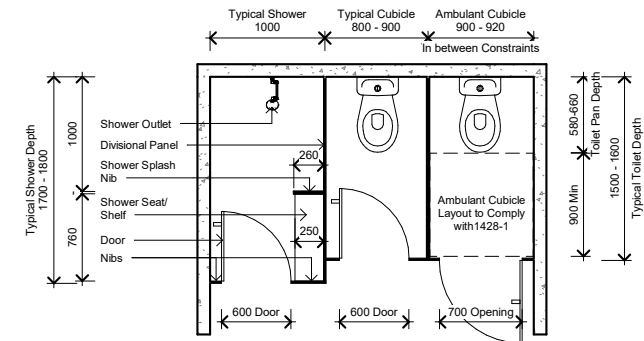
20 x 30mm grey powder coated aluminium C channel fixed to the ceiling

Floor Mounting:

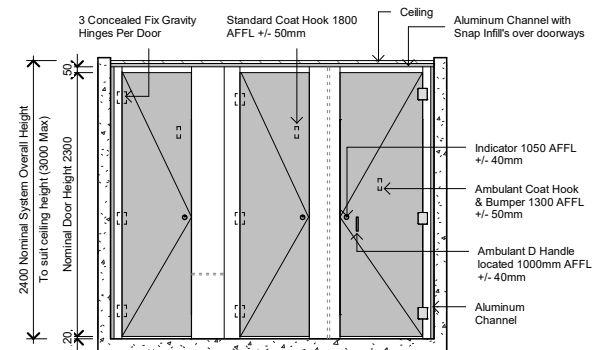
Nibs fixed with 40 x 12mm grey powder coated aluminium



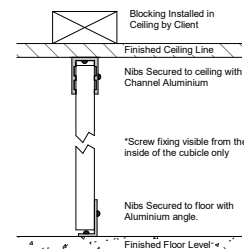
TYPICAL FLOOR PLAN



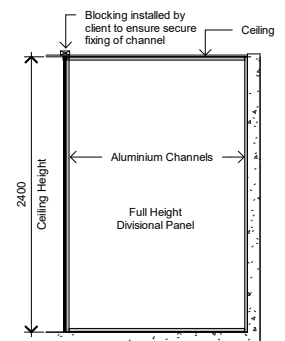
TYPICAL ELEVATION



FLOOR & CEILING FIXING DETAIL



TYPICAL SECTION



VANITIES (3VAN)



VANITIES (3VAN)

FEATURES

- Constructed out of antibacterial 13mm compact laminate chosen from 35 + colours
- 100% Waterproof design, no swelling after install
- Can be matched to your partitioning system

BENEFITS

- Prefabricated with basin cut out prior to install, reducing time onsite
- No swelling when in contact with water
- Available in full range of compact laminate colours
- Hides drainage

HOW TO SPECIFY

Product:

Duracube® Vanities (3VAN)

Board Selection:

Duracube® 13mm compact laminate

Wall Fixing:

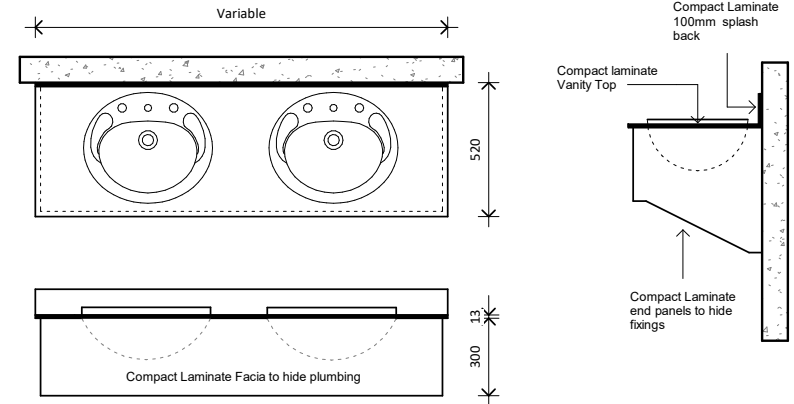
Custom Duracube® Bracket

SUITABLE FOR

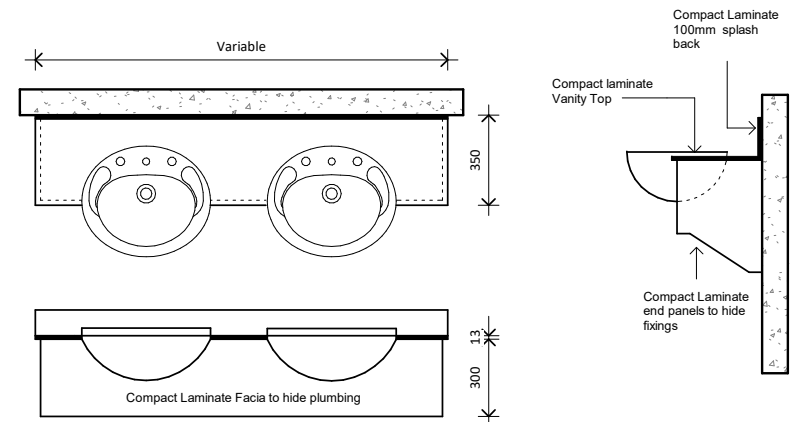
- Recreational Amenities
- Schools/Universities
- Entertainment Centres
- Public Amenities
- Shopping Centres
- Sporting and Gym Change Rooms



INSET BASIN DESIGN 520



SEMI RECESSED BASIN DESIGN 350



DURALOC® LOCKERS (3LOC)

STANDARD HARDWARE COMPONENTS



Key Lock &
Numbering



Shallow Cup
Hinge



Ventilation
Slot

ALTERNATE LOCK OPTIONS



KL 1000
Electronic
Code Lock



9 Digit Duraloc®
Electronic
Code Lock



9 Digit Duraloc®
RFID + Electronic
Code Lock

PRIVACY PANELS (3PP)

STANDARD HARDWARE COMPONENTS



Pedestal Leg



Ceiling Mount
30x20 C Channel



40 x 40 Post

FEATURES

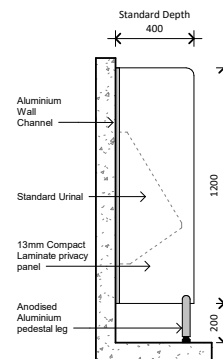
- Constructed using antibacterial 13mm compact laminate.
- Available with or without floor mounting
- Grey Powder Coated Aluminium extrusions with stainless steel fixings
- Suitable for general privacy

BENEFITS

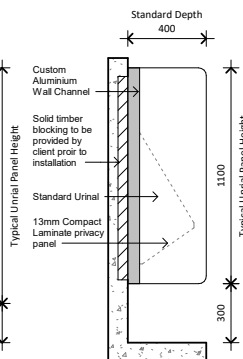
- Easy to install
- Unobtrusive
- Wide range of colours matching your partition system
- Easy to clean finish
- Attractive corporate appearance

TECHNICAL DRAWINGS

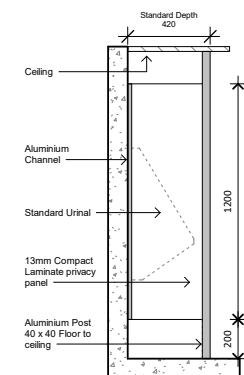
Pedestal Mount



Wall Hung



Ceiling Fixed



HOW TO SPECIFY

Product:

Duracube® Privacy Panels (3PP), with system (i.e. 3PP Pedestal Mount, 3PP Wall Hung or 3PP Ceiling Fixed)

Board Selection:

Durasafe® antibacterial 13mm compact laminate

Wall Fixing:

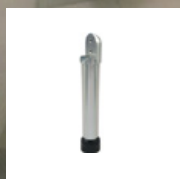
Grey powder coated aluminium channel

Floor Mounting:

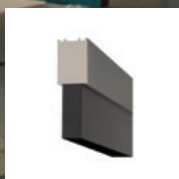
200mm aluminium pedestal leg or wall hung, or 40mm Square Post

CHILDCARE PRIVACY PANELS (3CPP)

STANDARD HARDWARE COMPONENTS



Pedestal Leg



Ceiling Mount
30x20 C Channel



40 x 40 Post

PANELS: 464 BARRIER REEF, 259 GREEN APPLE

FEATURES

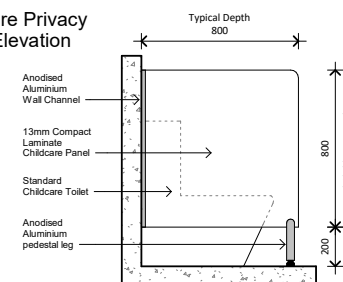
- Constructed using 13mm compact laminate.
- Fixed to floor with 200mm Aluminium Legs, same as 3POB
- Grey Powder Coated Aluminium extrusions with stainless steel fixings
- Suitable for Childcare toilets

BENEFITS

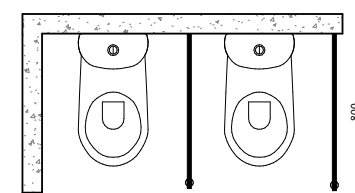
- Easy to install
- Unobtrusive
- Wide range of colours matching your partition system
- Easy to clean finish
- Attractive appearance

TECHNICAL DRAWINGS

Childcare Privacy Panel Elevation



Childcare Privacy Panel Plan View



HOW TO SPECIFY

Product:

Duracube® Childcare Privacy Panels (3CPP)

Board Selection:

Duracube® 13mm compact laminate

Wall Fixing:

30x20 Aluminium C Channel

Floor Mounting:

200mm Aluminium Pedestal leg



BENCH SEATING (3BS)

STANDARD HARDWARE COMPONENTS



Coat Hook



Single Seat
Frame



Double Seat
Frame

BENCH SEATING

FEATURES

- Incorporates antibacterial 13mm compact laminate
- Sturdy powder coated grey frames
- Most cost effective when designed in 1800mm and 1200mm lengths
- Available in island or wall fixed configurations
- Coat hooks and rail included above bench seating to match

HOW TO SPECIFY

Product:

Duracube® Bench Seating (3BS) - Wall Seating or Duracube® Bench Seating (3BS) - Island Seating

Seating Tops & Coat Hooks:

- Durasafe® antibacterial 13mm compact laminate

Frame Finish:

Powder-coated Pearl Grey

BENEFITS

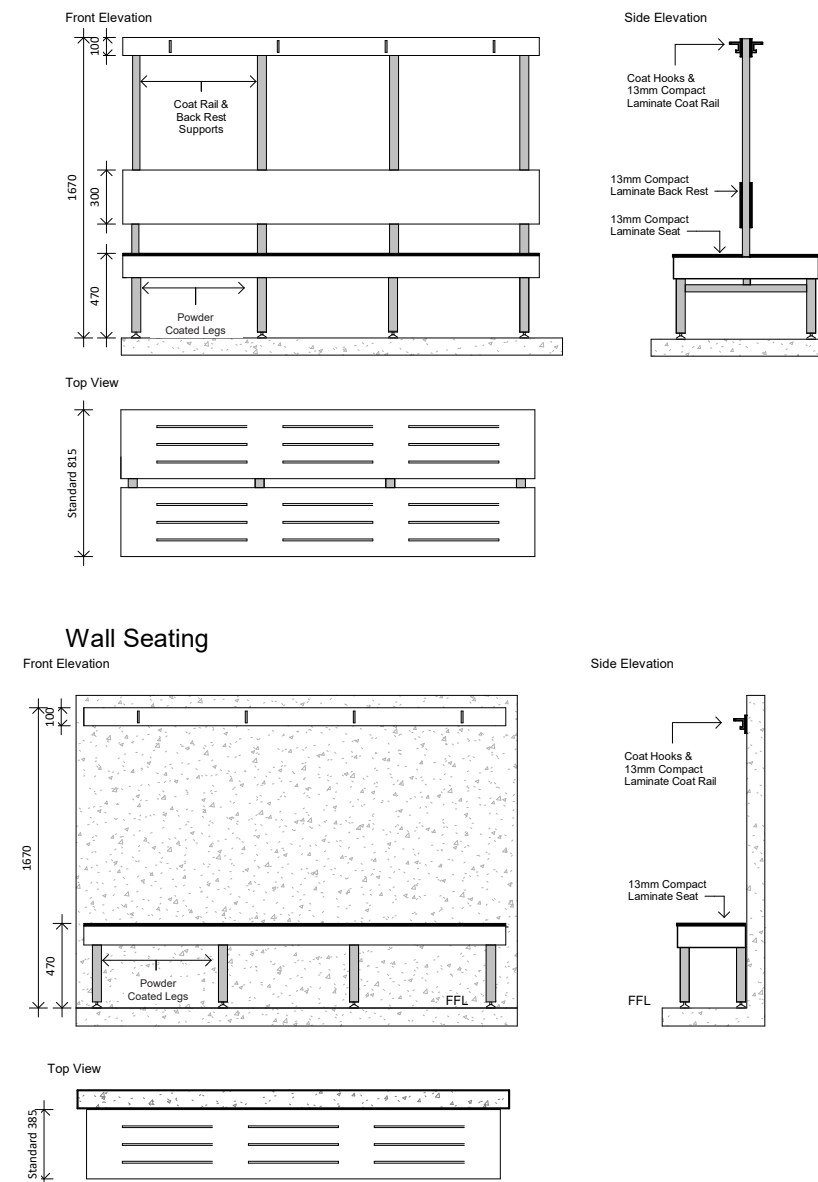
- Little maintenance is required to retain the fresh appearance of the laminated décor
- Vandal resistant
- Easy to clean and maintain
- Range of colours to match partition systems
- Suited for areas that are hose cleaned

SUITABLE FOR

- Aquatic Centres
- End of trip facilities
- Schools
- Sport Facilities
- Gyms



TECHNICAL DRAWINGS



CUSTOMISE YOUR PROJECT WITH COLOURS

We house a comprehensive range of stock colours to choose from, but if this selection isn't what you're after, we've got 60+ colours we can get in specifically for your project!

CUSTOMISE YOUR PROJECT WITH PRIVACY EDGING

Privacy edge can be added to all Duracube® partition systems for superior privacy. Supports zero door gaps and keeps bullying at bay in education environments. Providing one of the most private solutions in the industry when combined with Duracube's full height toilet & shower partitions system.

TOP VIEW

1 

NIB PANEL

DOOR PANEL

2 

NIB PANEL

DOOR PANEL

CUSTOMISE YOUR PROJECT WITH HARDWARE

Any of the below hardware can be added to your project to create your own design.

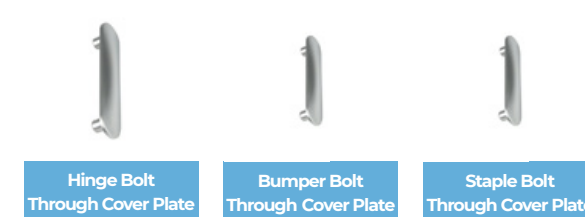
VIVA SATIN CHROME HARDWARE (STANDARD HARDWARE)



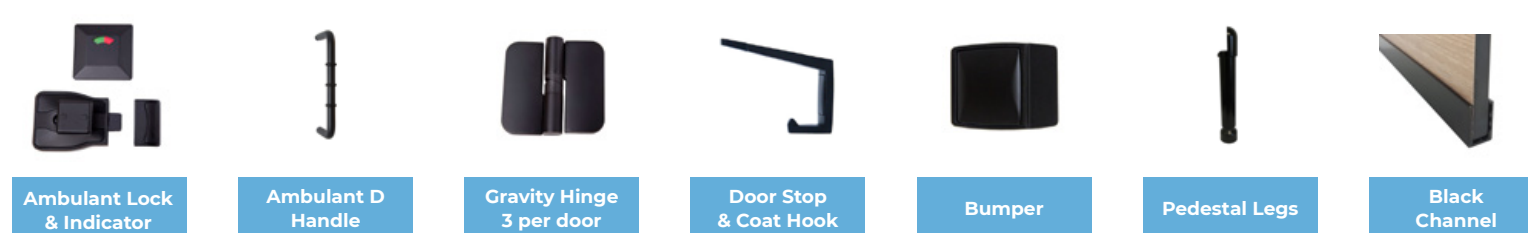
ZETLAN SATIN CHROME HARDWARE (OPTIONAL UPGRADE)



BOLT THROUGH HARDWARE



ZETLAN BLACK HARDWARE (OPTIONAL UPGRADE)



*Viva and Zetlan hardware can be upgraded to spring hinges upon request.

CUSTOMISED PROJECT INSPIRATION

We know designing a commercial bathroom can often be daunting, so we've made this process easier for you with our quality publication of Duracube® inspired bathrooms.

Contact us to grab your copy.



**CALL US TODAY AND FIND OUT
HOW YOUR NEXT PROJECT CAN
BE ANOTHER SUCCESS!**

For further information
and pricing
call 1300 387 228
or visit
www.duracube.com.au



All products within this brochure have been photographed to depict accurate shape, colour, texture and detail, however the products may look different in various conditions.

Please see a copy of the Duracube® terms, conditions and warranty details for more information (available at duracube.com.au).