



Durasafe®
COMPACT LAMINATE

Technical Data & Colour Chart

Version 2 – 2024

duracube.com.au

Durasafe® is tried and proven

Over 500,000 square metres of Durasafe® 13mm compact laminate has been used in commercial wet areas throughout Australia over the last 10 years.

✓ Quality

Duracube® implements strict quality and safety standards to ensure a consistent premium product.

✓ 10-year Warranty

Durasafe® has a 10-year warranty that is underwritten by Duracube®.

✓ Tested and Certified

Durasafe® complies with international and Australian standards including fire regulations.

✓ Sustainable

Durasafe® has an internationally recognised EPD, low VOC and contributes to Green Star certification. Contact Duracube® for details.

✓ Strength and Durability

Durasafe® is perfect for high use wet areas including public and commercial buildings, schools, universities, and sporting facilities.

✓ Water Resistant and Easy to Clean

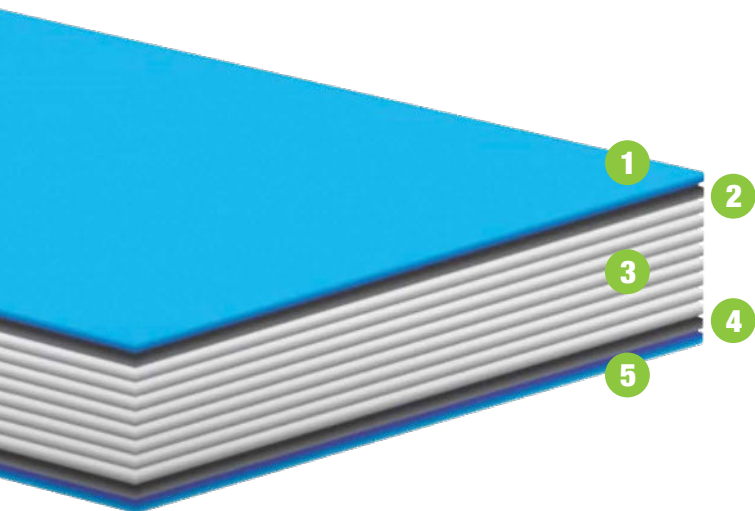
Durasafe® is impervious to water, suitable for hose cleaning and easy removal of graffiti.

✓ Hygienic Surface

Durasafe® has antibacterial, antifungal and antiviral surface properties that prevent germ growth and the spread of viruses.

✓ In Stock

Durasafe® standard colours are stocked in our Australian warehouses.



1. Top Layer – Tissue Paper

Treated with Melamine Resin

2. 2nd Layer – Decorative Design Paper

Treated with Melamine Resin

3. Middle Layers – Kraft Brown Paper

Treated with Phenolic Resin

4. 2nd Last Layer – Decorative Design Paper

Treated with Melamine Resin

5. Bottom Layer – Tissue Paper

Treated with Melamine Resin

Durasafe® is safe for the environment and safe for you.





Durasafe®
COMPACT LAMINATE

Stocked Colour Range

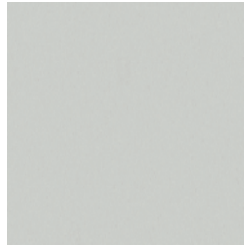
Durasafe®
10 Year
Warranty



111 Arctic White



113 Off White



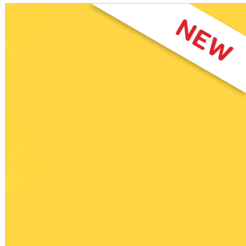
275 Classic Grey



268 Evening



279 Charcoal



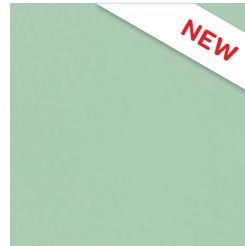
207 Wattle



138 Red Ochre



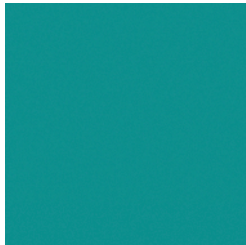
467 Jade Mist



243 Sage Green



245 Gum Leaf



464 Barrier Reef



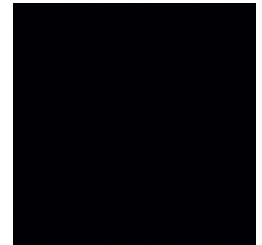
284 Sky



291 Royal Blue



297 Deep Water



401 Midnight



5388 Alpine Ash



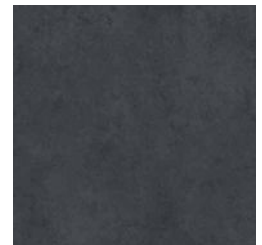
5577 Concrete



923 Brushed Grey



5730 Brushed Graphite



5578 Slate



9610 Pure Ash



738 Oak



5394 Washed Acacia



5003 Philippine Teak



5333 Southern Pine



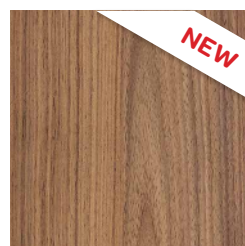
5353 Rosenheim Elm



5331 Midnight Acacia



5389 Deep Woods



5375 Native Walnut



5427 Refresh Oak

Please Note: The colours in this brochure have been recreated as close as possible to the Durasafe® Compact Laminate colours. The colour chart should be used as a guide only. Physical samples of compact laminate colours are available upon request.

Durasafe® Technical Specifications

| Properties | Unit | Min. Compliance Values | Durasafe® Values |
|---|-----------------|--|------------------|
| Thickness tolerance | mm | 13.0 ± 0.5 | 13.0 ± 0.28 |
| Resistance to dry heat at 180°C | Grade | Not worse than 4 | 5 |
| Resistance to surface water | Rev | 350 (Min) | 400 |
| Resistance to immersion in boiling water a) Mass Increase b) Thickness c) Appearance | % % Grade | 2.0 (Max) 2.0 (Max) Not worse than 4 | 0.5 0.7 5 |
| Dimensional stability at deviated temperature a) Longitudinal b) Transverse | % % | 0.06 (Max) 0.53 (Max) | 0.03 0.12 |
| Dimensional stability at 20°C c) Longitudinal d) Transverse | % % | 0.16 (Max) 0.28 (Max) | 0.08 0.13 |
| Resistance to impact by a large diameter ball a) Drop height b) Diameter of indentation | mm mm | 1800 10 (Max) | 2000 2 |
| Resistance to scratching | N | 2.0 (Min) | 2.5 |
| Resistance to staining a) Group 1 & 2 b) Group 3 & 4 | Grade Grade | Not worse than 5 Not worse than 4 | 6 5 |
| Resistance to colour change a) In Xerox arc light b) In enclosed carbon arc light | Grade Grade | Not worse than 6 Not worse than 5 | 6 5 |
| Resistance to cigarette burns | Grade | Not worse than 3 | 4 |
| Resistance to steam | Grade | Not worse than 4 | 5 |
| Resistance to crazing | Grade | Not worse than 4 | 5 |
| Resistance to moisture | Grade | Not worse than 4 | 5 |
| Flexural modulus | Mpa | 1000 (Min) | 11000 |
| Flexural strength | Mpa | 100 (Min) | 120 |
| Tensile strength | Mpa | 70 (Min) | 90 |
| Density | g/cm³ | 1.35 | 1.40 |
| NCC/BCA Fire Group Number when tested in accordance with AS3837 | Group | 3 | 3 |

Note: Min. Compliance Values as per standards: AS/NZS 2924.1:1998 and BS EN 438-6:2016.



Duracube®
Specialists in Wet Area Solutions

Contact our friendly sales team:

Phone: 1300 387 228

Email: sales@duracube.com.au

www.duracube.com.au