

Our Product Catalogue



“It’s the effort we put in that minimises stress for our customers, from early consultation to on-time delivery.”

Ben Simpson
General Manager, DuraCube

When performance matters, DuraCube is the reliable choice for builders and architects across the country. We deliver systems as specified and on time. And best of all, DuraCube is backed by a supportive team of specialist consultants who are there if you need them.

Contents

Introduction	6	Section 4: Bench Seating	62
Product Range Inclusions	6	Overview	64
Our Customer Promise	6	Bench Seating – Island	65
Process and Locations	7	Bench Seating – Wall with Shelving	66
		Bench Seating – Wall with Coat Rail	67
		Bench Seating – Shoe Box Island	68
		Bench Seating – Shoe Box Wall with Shelving	69
		Bench Seating – Shoe Box Wall with Coat Rail	70
Section 1: Partitioning Systems	8		
Pedestal Mount Overhead Braced	10	Section 5: Vanity Benches	72
Pedestal Mount Ceiling Fixed	14	Overview	74
Floor Mount Overhead Braced	18	Vanity Bench – Inset	76
Floor Mount Ceiling Fixed	22	Vanity Bench – Semi-Recessed	77
Floor Mount Free Standing	26		
Full Height Privacy Core	30	Section 6: Compact Laminate	78
Full Height Privacy Ultra	34	Overview	80
Full Height Privacy Max	38	Colour Range	81
		Cut to Size Service	82
Section 2: Privacy Panels	42		
Overview	44	Section 7: Accessories / Hardware	84
Privacy Panels – Wall Mount	45-47	Accessories	86
Privacy Panels – Pedestal Mount	45-47	Hardware	87
Privacy Panels – Childcare	45-47		
Privacy Panels – Full Height	45-47	Contact	88
Privacy Panels – Post Fixed	45-47		
Section 3: Locker Systems	48		
Overview	50		
Lockers – Plinth Mounted	51		
Lockers – Wall Mounted	52		
Lockers – Bench Mounted	53		
Lockers – Shoe Box Mounted	54		
Lockers – Shoe Box Seating Mounted	55		
Lockers – Plinth Mounted End-of-Trip	56		
Lockers – Wall Mounted End-of-Trip	58		
Lockers – Shoe Box Mounted End-of-Trip	60		

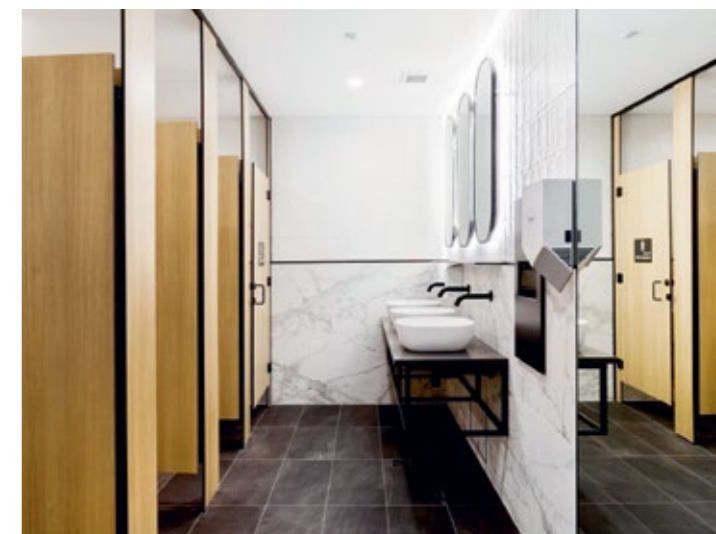
FIRST FOR DESIGNERS

DuraCube is the ideal design partner for creating contemporary bathroom joinery systems. We offer innovative solutions that combine sleek aesthetics, durable materials, and exceptional functionality.





Our diverse range of colours, including timber hues, empowers creative teams to deliver highly sophisticated and visually striking spaces.



Agility sets us apart. We can design and install bathroom joinery systems within weeks.



We collaborate with designers and architects to ensure our joinery complements the overall aesthetic.





DuraCube is a dedicated team of professionals that specialises in providing cost-effective and fit-for-purpose solutions for commercial bathrooms.

We are a wholly owned and operated Australian business that has been providing the construction industry with wet area products and services since 1987.

We collaborate with architects, designers, and builders to design and deliver exceptional bathroom joinery.

From initial design to installation and project close-out, we provide superior customer service and respond quickly to clients' evolving needs. Our tight-knit team handles every detail with care and precision, and a single point of contact ensures a seamless experience.

We manufacture our joinery using DuraSafe Compact Laminate, a 13mm antiviral, antibacterial, and antifungal compact laminate. Machined in our Western Sydney factory, our products are shipped weekly to warehouses across Australia.

PRODUCT RANGE INCLUSIONS

- Toilet and shower partitioning systems
- Privacy panels
- Locker systems
- Bench seating
- Vanity benches
- Hardware, accessories and locks
- DuraSafe compact laminate cut to size

OUR CUSTOMER PROMISE

We are committed to providing superior customer service by:

- Using our industry experience and expertise
- Identifying issues and proactively providing solutions
- Communicating through one point of contact
- Supplying quality products
- Delivering our products on time every time

Process and Locations



Step 1 Send Project Details

Call a consultant or send us your plans.



Step 2 Choose System

Choose products to suit your space.



Step 3 Choose Colours

Select colours, finishes and hardware.



Founded

Staff Members

Cubicle Production Capacity (Per Week)

1987 **50+** **1,000+**

DuraCube has offices and depots in New South Wales, Queensland, Victoria and South Australia.

- Supply and Installation
- Supply Only

SECTION 1

PARTITIONING

SYSTEMS

Pedestal Mount Overhead Braced	10
Pedestal Mount Ceiling Fixed	14
Floor Mount Overhead Braced	18
Floor Mount Ceiling Fixed	22
Floor Mount Free Standing	26
Full Height Privacy Core	30
Full Height Privacy Ultra	34
Full Height Privacy Max	38





The DuraCube pedestal mount overhead braced wet area partitioning system is strong, economical, and designed to minimise material waste.

The system is quick and easy to assemble, reducing installation time.

Pedestal floor mounting allows for easy cleaning with a mop and hose.

REGULATORY COMPLIANCE

- NCC 2022 Part F — Deem to Satisfy Provisions
- F4D82c — Door removable from outside if less than 1.2m between pan and doorway

APPLICATIONS

- Schools and universities
- End-of-trip facilities
- Shopping centres
- Sport and gym change rooms
- Defence ablution blocks
- Corporate amenities
- Recreational amenities
- Pubs and clubs

FEATURES & BENEFITS

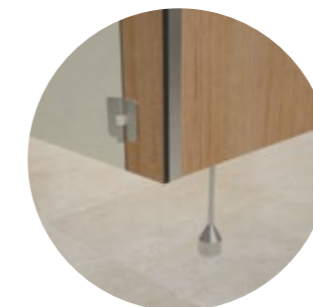
- The most cost-effective partitioning system
- DuraSafe 13mm compact laminate construction
- No edge strip required as compact laminate black core is visible on the edges
- Efficient use of materials
- Impact-resistant construction
- Vandal-resistant surface
- Waterproof, suitable for hose cleaning
- Easy to clean and sanitise
- Reduced maintenance time and cost
- Quick and easy installation
- Overall system height 2020mm AFFL

“The pedestal mount overhead braced partitioning system is strong, quick and easy to install, and easy to clean.”

Mark Simpson
Founder, DuraCube



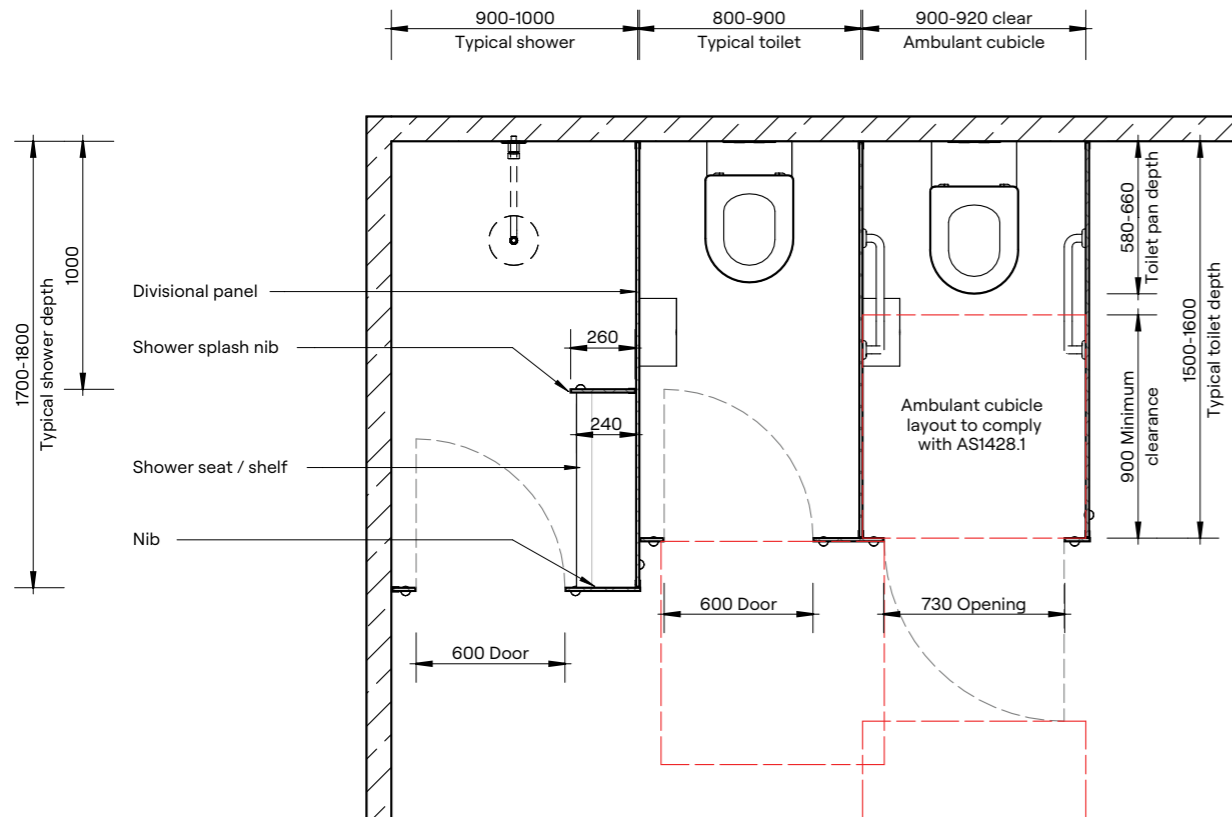
Standard pedestal leg



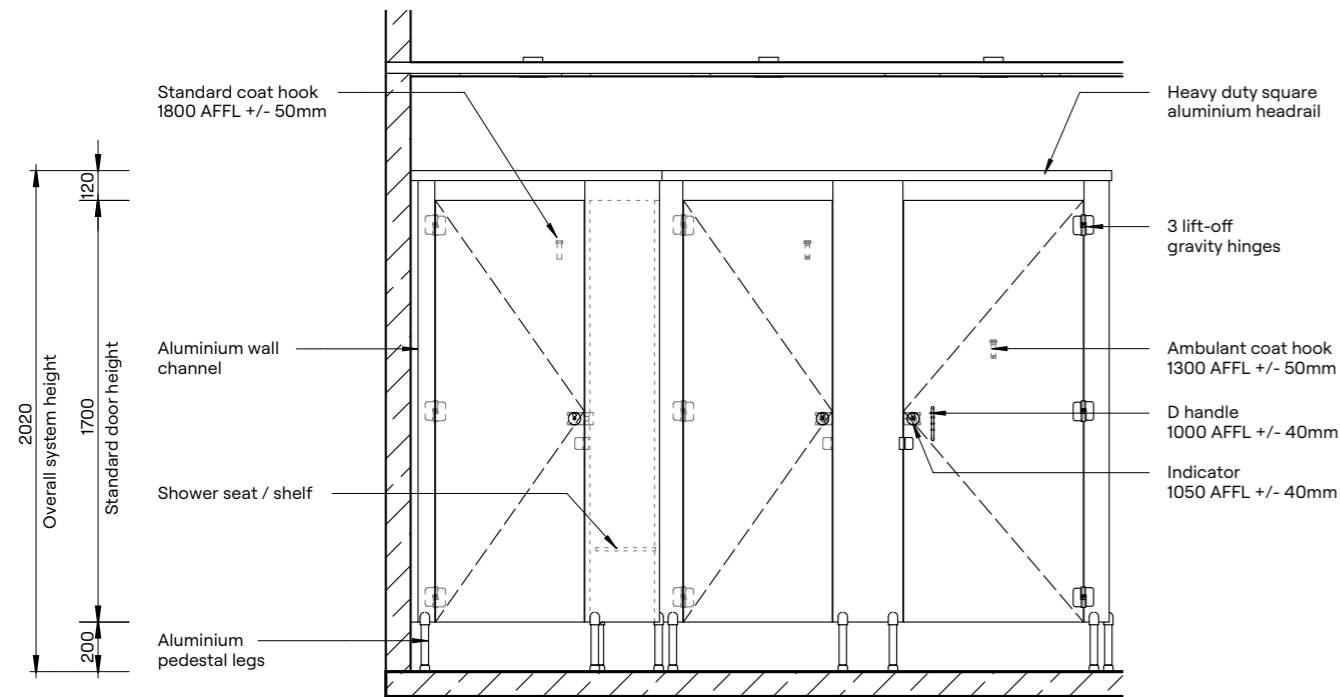
Optional setback pedestal leg



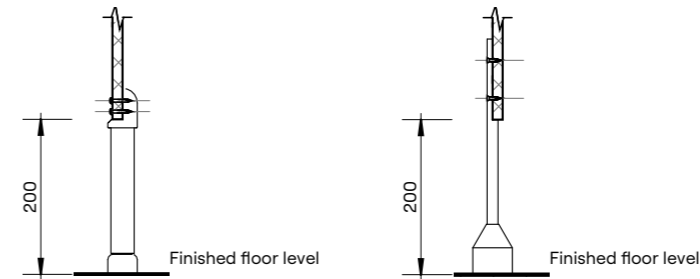
DuraSafe Compact Laminate
All DuraCube panels and doors are constructed with DuraSafe 13mm compact laminate.



Plan

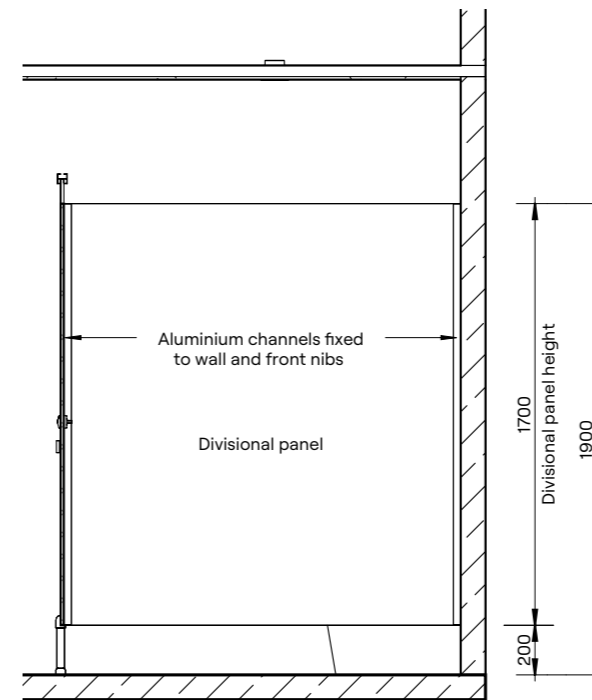


Elevation



Standard Pedestal Mount Detail

Optional Setback Pedestal Mount Detail



Section

“We manufacture our partitioning systems in-house and can deliver high quality products within three weeks from site measurement.”

Athol Simpson
Operations Manager, DuraCube

HOW TO SPECIFY

Product
DuraCube pedestal mount overhead braced (POB)

Door and Panel Construction Material
DuraSafe 13mm compact laminate

Hardware
Viva satin chrome hardware is standard. Other hardware is available – see page 87

Headrail
Aluminium square profile 40mm x 40mm
Colour – Oyster Grey powder coat

Floor Mounting
Adjustable 200mm aluminium pedestal legs

Overall System Height
2020mm AFFL



The DuraCube pedestal mount ceiling fixed wet area partitioning system is a visually appealing design. All panels are fixed directly to the ceiling while the pedestal legs provide structural strength.

The system is quick and easy to assemble, reducing installation time. Pedestal floor mounting allows for easy cleaning with a mop and hose.

REGULATORY COMPLIANCE

- NCC 2022 Part F — Deem to Satisfy Provisions
- F4D82c — Door removable from outside if less than 1.2m between pan and doorway

APPLICATIONS

- Schools and universities
- End-of-trip facilities
- Shopping centres
- Sport and gym change rooms
- Defence ablution blocks
- Corporate amenities
- Recreational amenities
- Pubs and clubs

FEATURES & BENEFITS

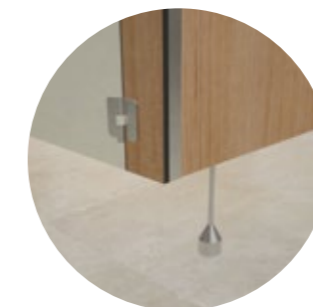
- DuraSafe 13mm compact laminate construction
- No edge strip required as compact laminate black core is visible on the edges
- Efficient use of materials
- Impact-resistant construction
- Vandal-resistant surface
- Waterproof, suitable for hose cleaning
- Easy to clean and sanitise
- Reduced maintenance time and cost
- Quick and easy installation
- Overall system height 2400mm to 3000 AFFL

“The pedestal mount ceiling fixed partitioning system is a strong system with minimal lines as there is no headrail required.”

Kasun Jayasinghe
Commercial Manager, DuraCube



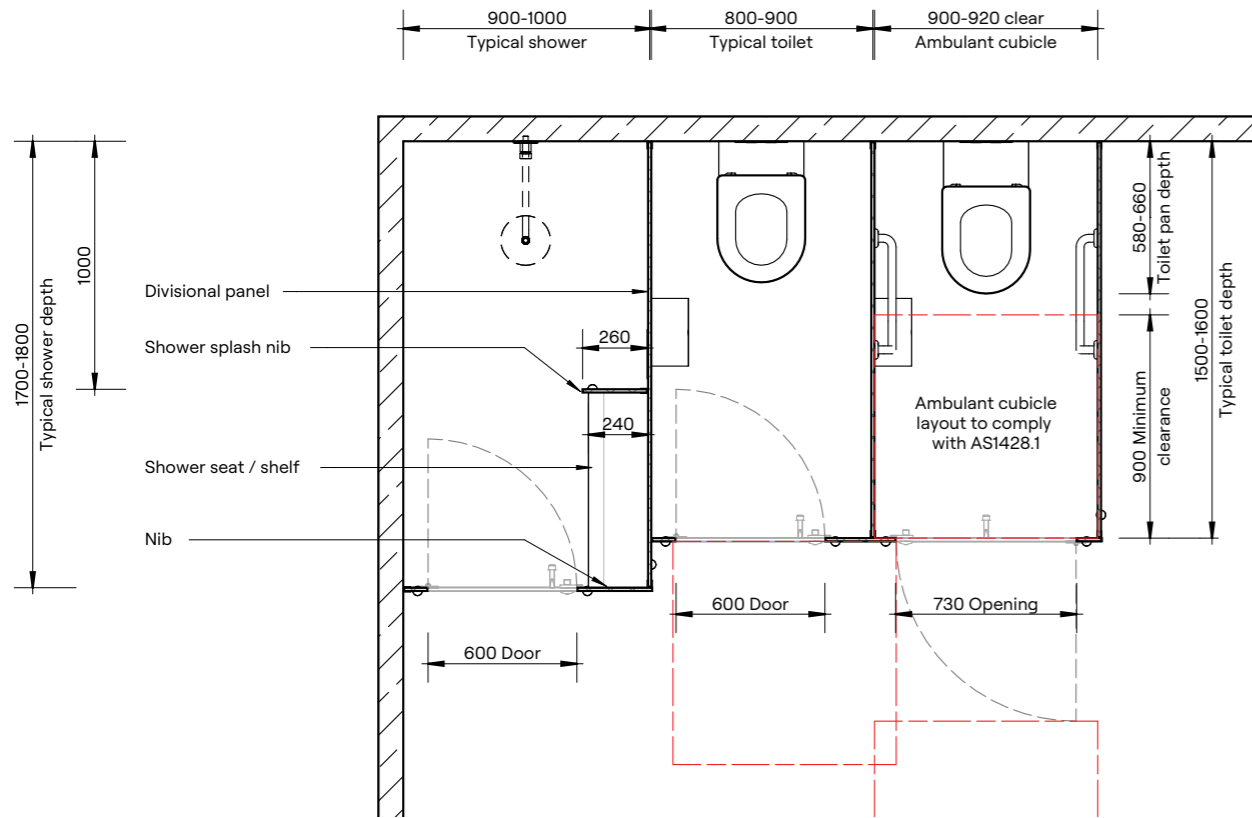
Standard pedestal leg



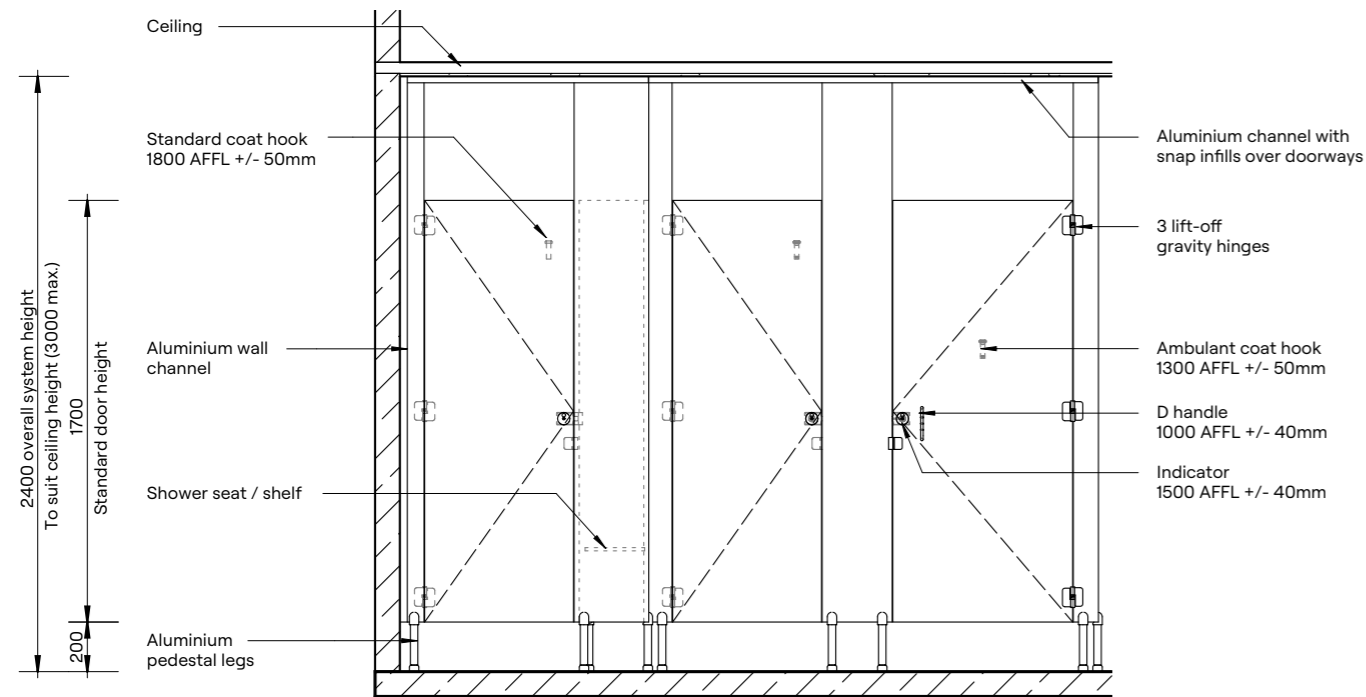
Optional setback pedestal leg



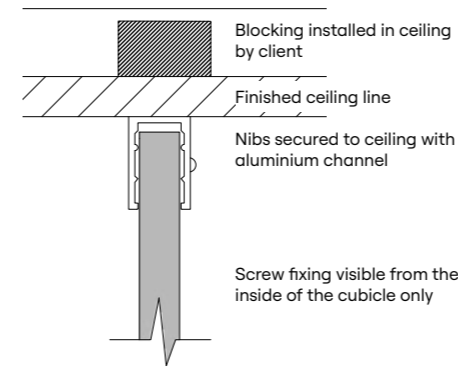
DuraSafe Compact Laminate
All DuraCube panels and doors are constructed with DuraSafe 13mm compact laminate.



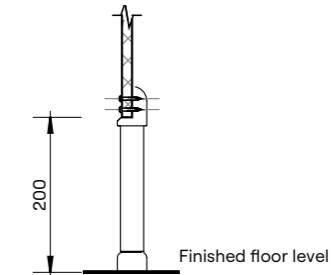
Plan



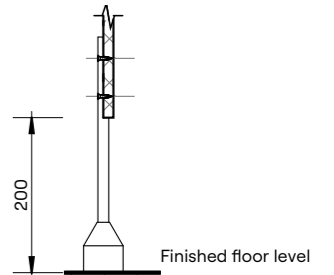
Elevation



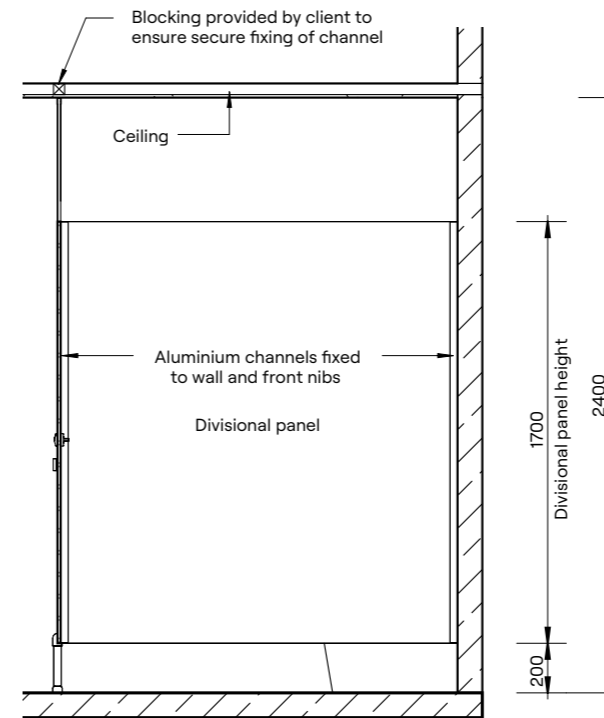
Ceiling Fixing Detail



Standard Pedestal Mount Detail



Optional Setback Pedestal Mount Detail



Section

HOW TO SPECIFY

Product
DuraCube pedestal mount ceiling fixed (PCF)

Door and Panel Construction Material
DuraSafe 13mm compact laminate

Hardware
Viva satin chrome hardware is standard
Other hardware is available – see page 87

Ceiling Fixing
Aluminium C channel 20mm x 30mm fixed to the ceiling
Colour – Oyster Grey powder coat

Floor Mounting
Adjustable 200mm aluminium pedestal legs

Overall System Height
2400mm to 3000mm AFFL



Our floor mount overhead braced wet area partitioning system is one of the strongest systems we offer and specifically designed for heavy-duty applications.

Aesthetically pleasing, it is the ideal solution for schools, end-of-trip facilities and high use corporate bathrooms.

REGULATORY COMPLIANCE

- NCC 2022 Part F — Deem to Satisfy Provisions
- F4D82c — Door removable from outside if less than 1.2m between pan and doorway

APPLICATIONS

- Schools and universities
- End-of-trip facilities
- Shopping centres
- Sport and gym change rooms
- Defence ablution blocks
- Corporate amenities
- Recreational amenities
- Pubs and clubs

FEATURES & BENEFITS

- Nibs mounted to the floor provide stability, strength and durability
- DuraSafe 13mm compact laminate construction
- No edge strip required as compact laminate black core is visible on the edges
- Impact-resistant construction
- Vandal-resistant surface
- Waterproof, suitable for hose cleaning
- Easy to clean and sanitise
- Reduced maintenance time and cost
- Overall system height 2020mm AFFL

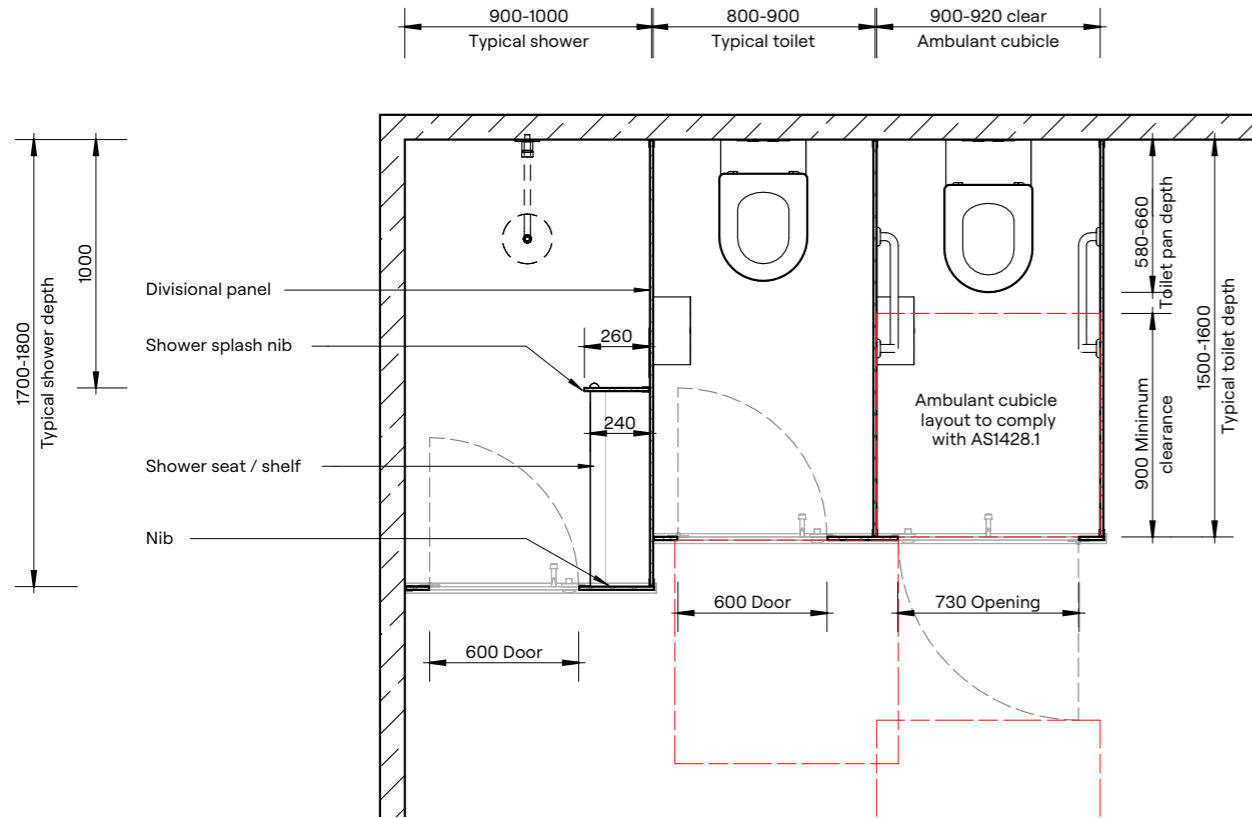
“The floor mount overhead braced partitioning system is robust, ideal for heavy duty applications, and provides a clean timeless appeal.”

Rick Kennard
Sales Executive, DuraCube

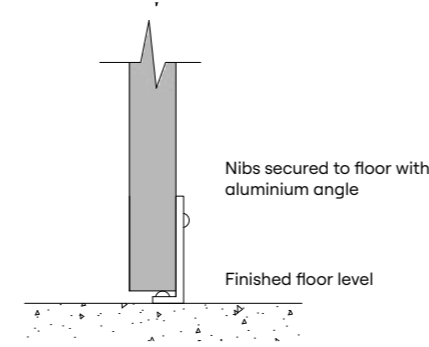


Note: This system is only suitable for installation on a concrete sub-floor. Minimum fixing depth is 100mm. Fixings will penetrate the waterproofing membrane.

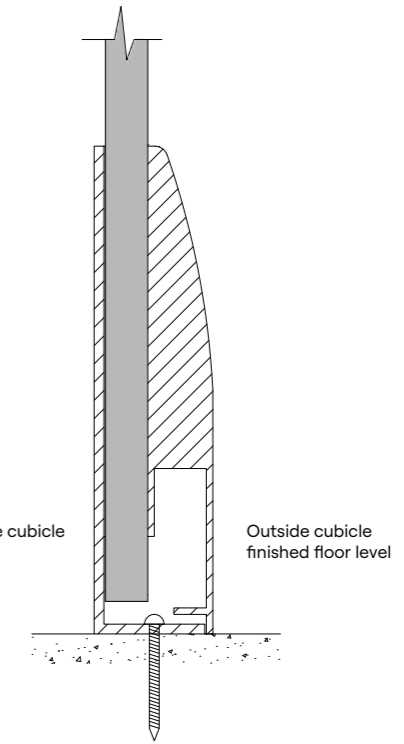
DuraSafe Compact Laminate
All DuraCube panels and doors are constructed with DuraSafe 13mm compact laminate.



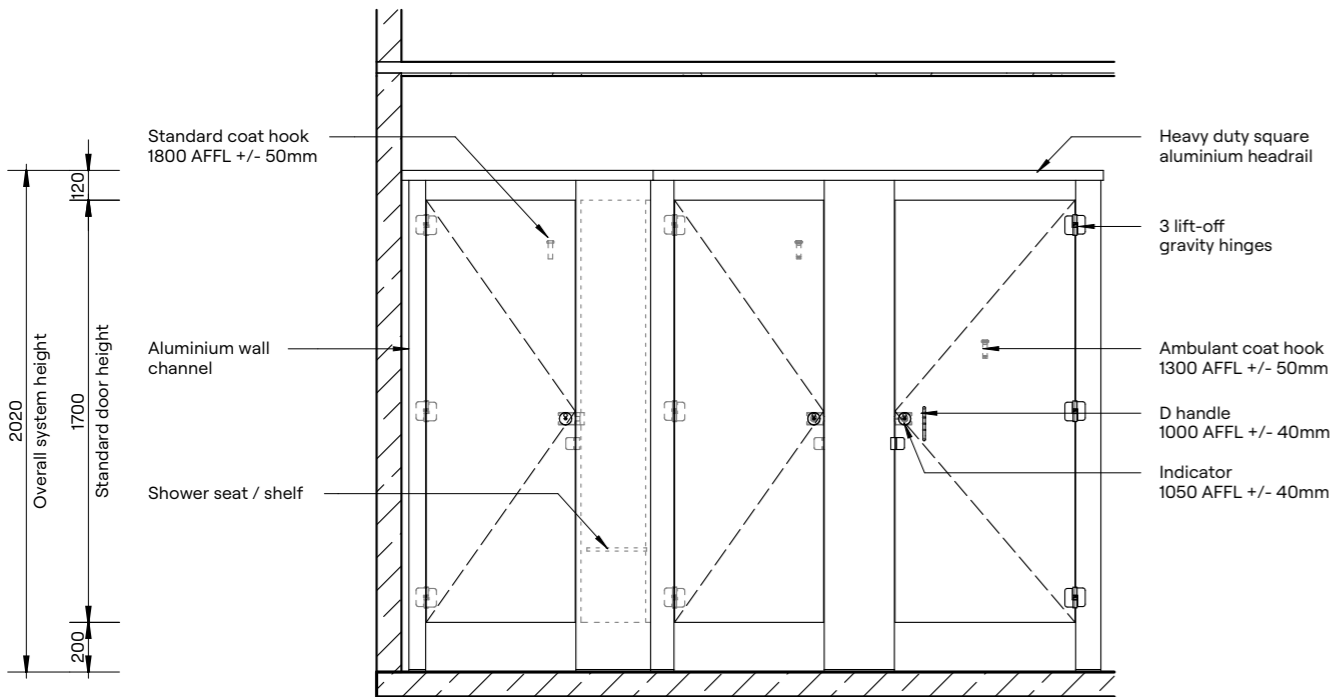
Plan



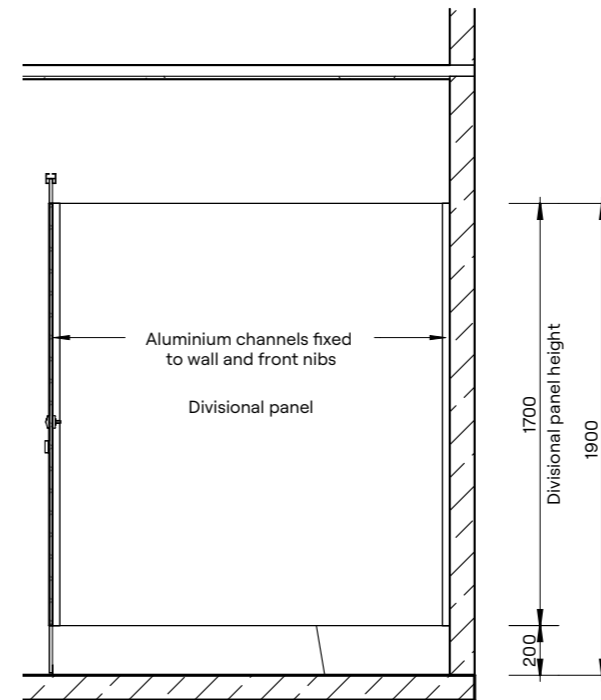
Floor Mounting Detail



Optional 150mm Skirt Mount Detail



Elevation



Section

HOW TO SPECIFY

Product
DuraCube floor mount overhead braced (FOB)

Door and Panel Construction Material
DuraSafe 13mm compact laminate

Hardware
Viva satin chrome hardware is standard
Other hardware is available – see page 87

Headrail
Aluminium square profile 40mm x 40mm
Colour – Oyster Grey powder coat

Floor Mounting
Nib panels fixed with 40mm x 12mm anodised aluminium flat bar or optional skirt mount

Overall System Height
2020mm AFFL



Our floor mount ceiling fixed wet area partitioning system is designed specifically for use in upmarket corporate applications or anywhere that requires a quality finished bathroom.

The superbly finished, streamlined design makes this system one of our most popular and aesthetically pleasing partitioning systems.

REGULATORY COMPLIANCE

- NCC 2022 Part F — Deem to Satisfy Provisions
- F4D82c — Door removable from outside if less than 1.2m between pan and doorway.

APPLICATIONS

- Schools and universities
- End-of-trip facilities
- Shopping centres
- Sport and gym change rooms
- Defence ablution blocks
- Corporate amenities
- Recreational amenities
- Pubs and clubs

FEATURES & BENEFITS

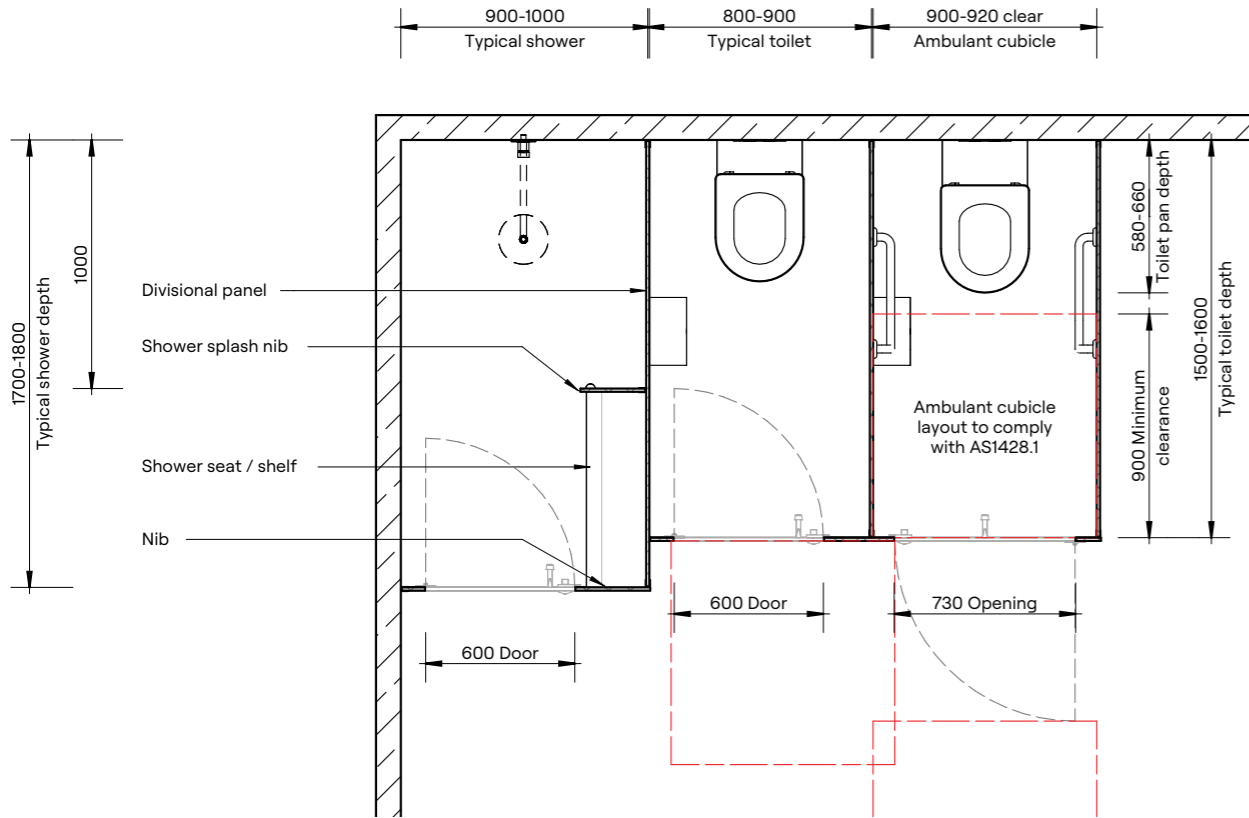
- Nibs mounted to the floor provide stability, strength and durability
- DuraSafe 13mm compact laminate construction
- No edge strip required as compact laminate black core is visible on the edges
- Aesthetically pleasing design with clean lines
- Impact-resistant construction
- Vandal-resistant surface
- Waterproof, suitable for hose cleaning
- Easy to clean and sanitise
- Reduced maintenance time and cost
- Overall system height 2020mm AFFL

“The floor mount ceiling fixed partitioning system presents a quality, up-market aesthetic through clean lines and the continuity of the finish.”

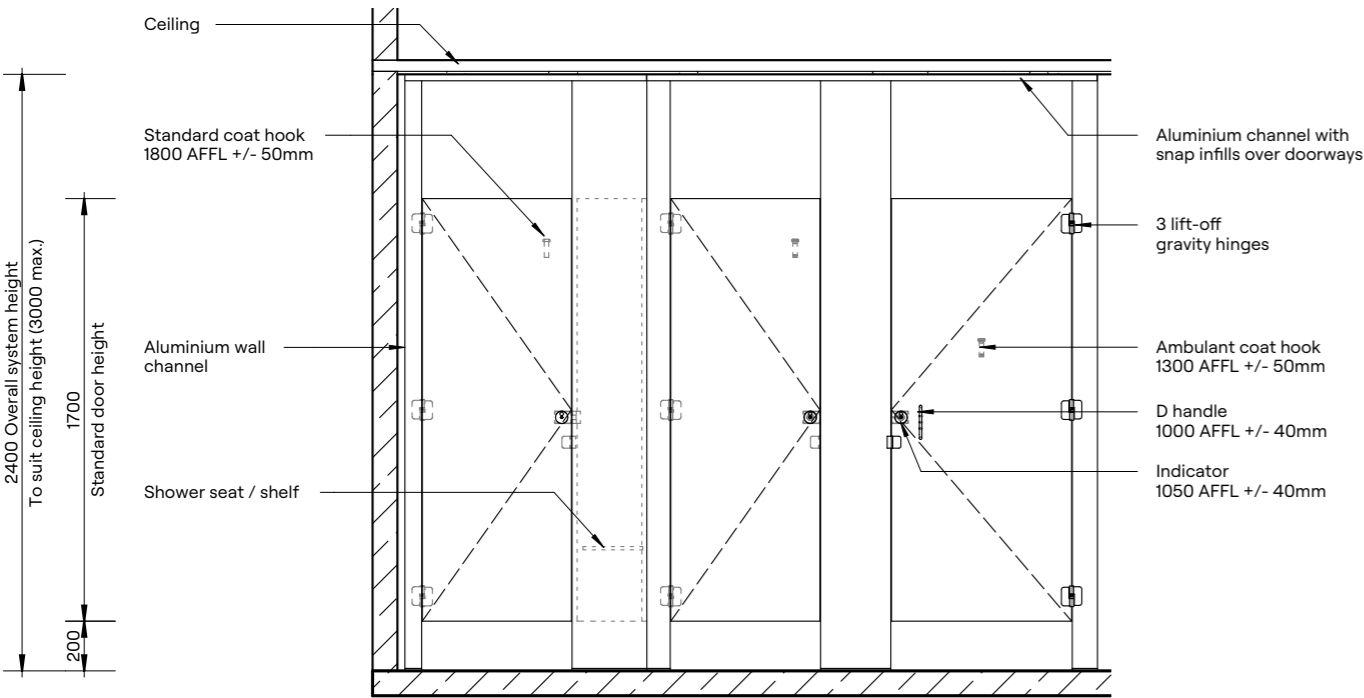
Ron Simpson
Major Projects Manager, DuraCube



DuraSafe Compact Laminate
All DuraCube panels and doors are constructed with DuraSafe 13mm compact laminate.

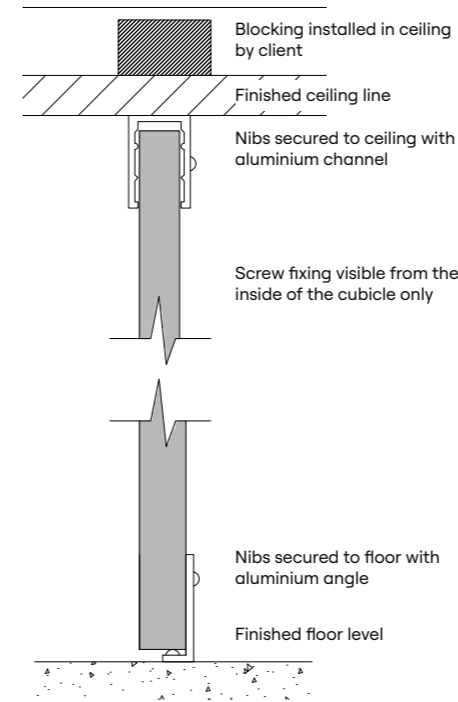


Plan

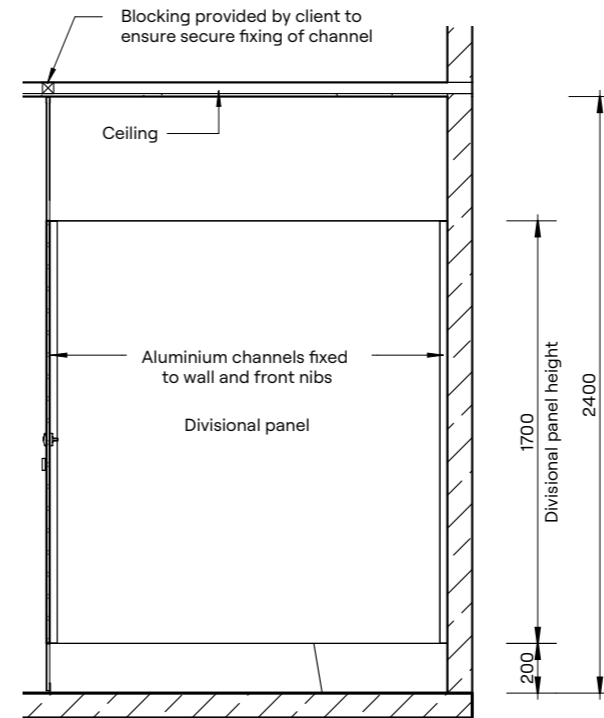


Elevation

Ceiling Fixing Detail



Floor Mounting Detail



Section

HOW TO SPECIFY

Product
DuraCube floor mount ceiling fixed (FCF)

Door and Panel Construction Material
DuraSafe 13mm compact laminate

Hardware
Viva satin chrome hardware is standard
Other hardware is available – see page 87

Ceiling Fixing
Aluminium C channel 20mm x 30mm fixed to the ceiling
Colour – Oyster Grey powder coat

Floor Mounting
Nib panels fixed with 40mm x 12mm anodised aluminium flat bar

Overall System Height
2400mm to 3000 AFFL



Our floor mount free standing wet area partitioning system is one of the most sophisticated systems we offer.

This high quality, low maintenance solution is specifically designed for use in low traffic areas and is suitable for upmarket corporate applications.

REGULATORY COMPLIANCE

- NCC 2022 Part F — Deem to Satisfy Provisions
- F4D82c — Door removable from outside if less than 1.2m between pan and doorway.

APPLICATIONS

- Corporate amenities
- Low traffic areas

“The floor mount free standing partitioning system offers a sleek, minimalist design for use in low traffic areas.”

Matthew Ponza
Specification Manager, DuraCube

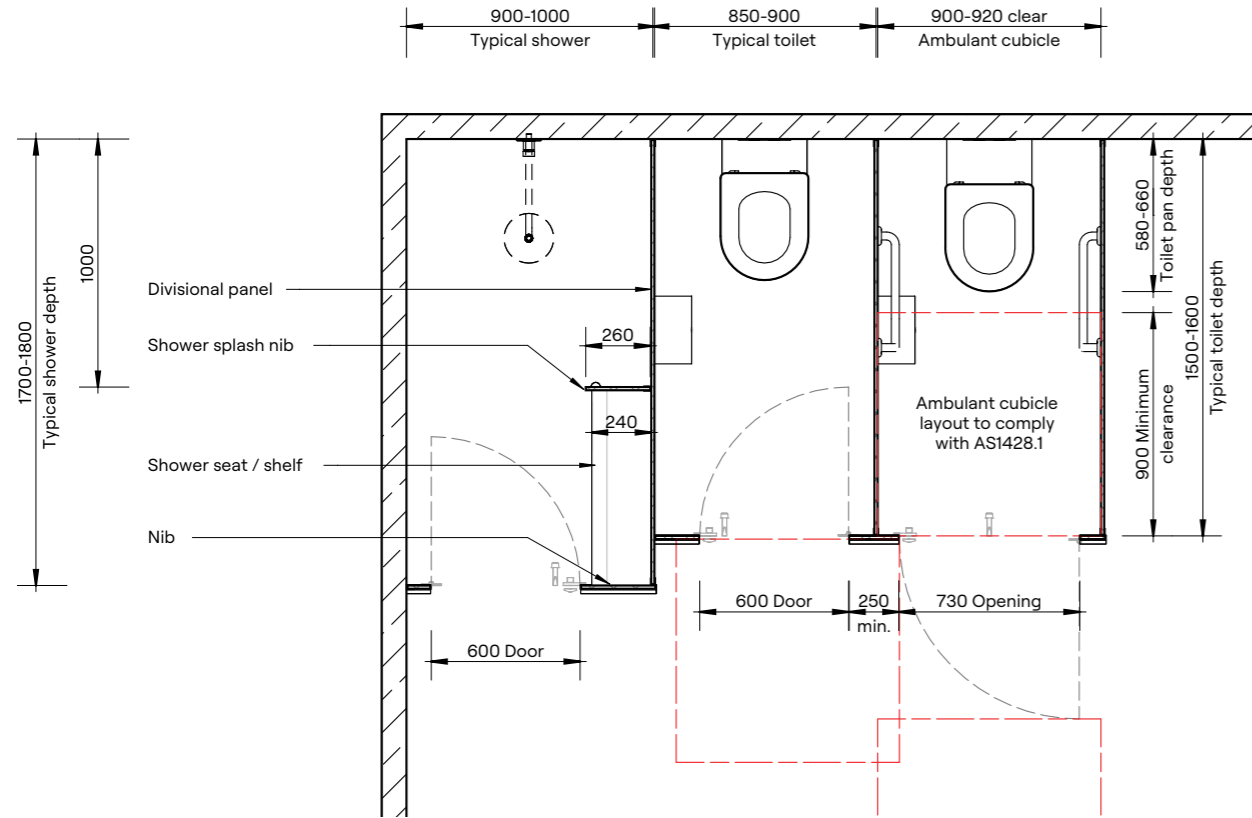
FEATURES & BENEFITS

- No headrail or ceiling fixing creates a sleek, modern design with clean lines
- Nibs mounted to the floor provide stability
- DuraSafe 13mm compact laminate construction
- No edge strip required as compact laminate black core is visible on the edges
- Impact-resistant construction
- Vandal-resistant surface
- Waterproof, suitable for hose cleaning
- Easy to clean and sanitise
- Reduced maintenance time and cost
- Overall system height 1900mm AFFL

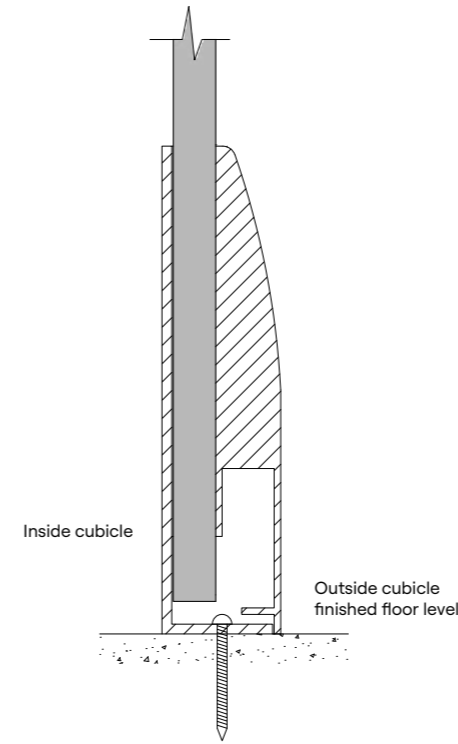
Please Note: This system is only suitable for installation on a concrete sub-floor. Minimum fixing depth is 100mm. Fixings will penetrate the waterproofing membrane.



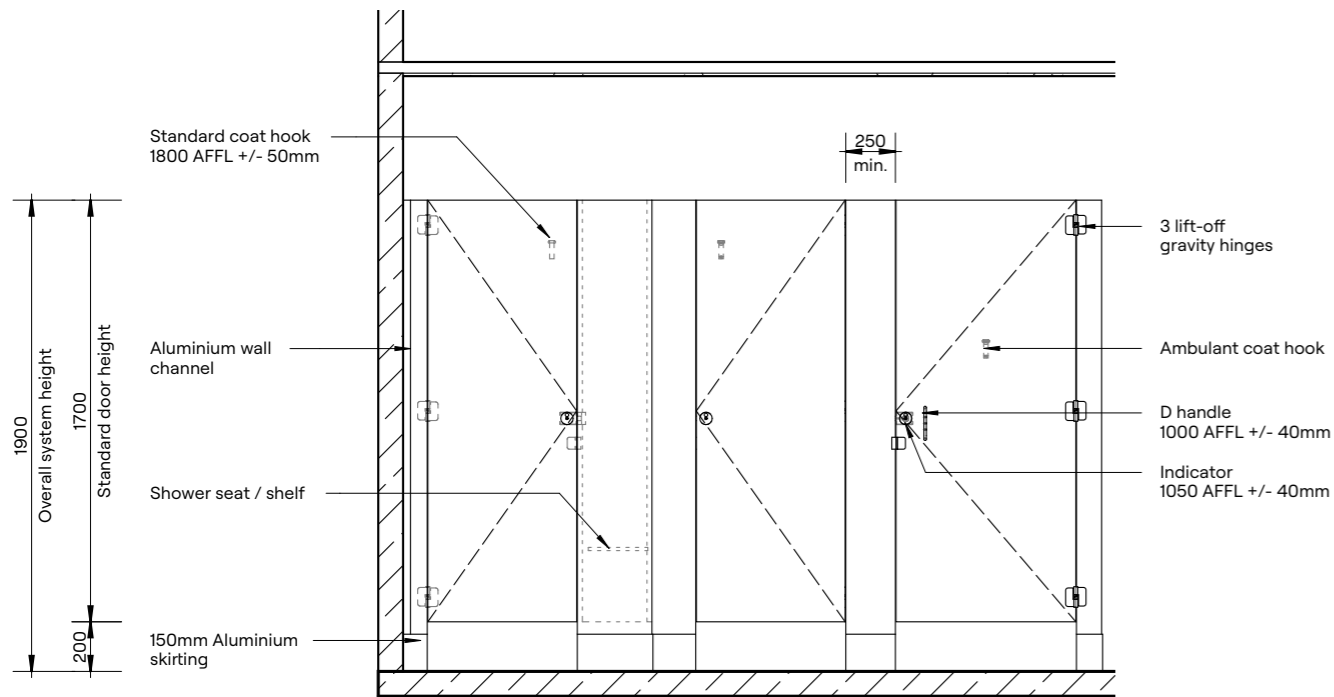
DuraSafe Compact Laminate
All DuraCube panels and doors are constructed with DuraSafe 13mm compact laminate.



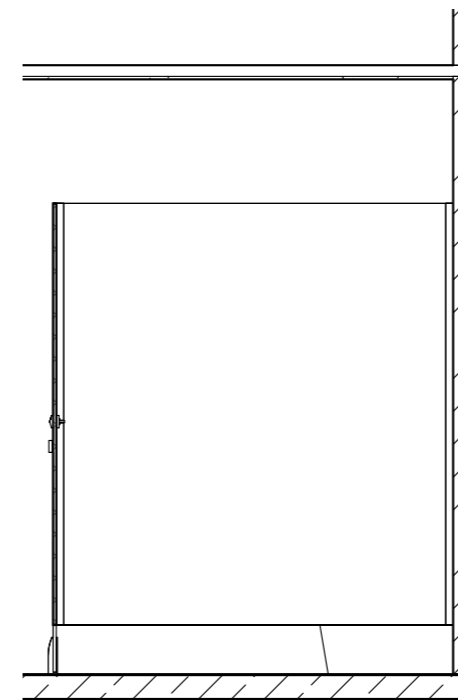
Plan



150mm Skirt Mount Detail



Elevation



Section

HOW TO SPECIFY

Product
DuraCube floor mount free standing (FFS)

Door and Panel Construction Material
DuraSafe 13mm compact laminate

Hardware
Viva satin chrome hardware is standard
Other hardware is available – see page 87

Floor Mounting
Nib panels fixed with skirt mount
Colour – Oyster Grey powder coat

Overall System Height
1900mm AFFL



Our full height privacy core is a wet area partitioning system that provides visual privacy at an affordable price.

Privacy core panels above the doors are slotted to provide air circulation.

This system complies with Department of Education standards in most Australian states.

REGULATORY COMPLIANCE

- NCC 2022 Part F — Deem to Satisfy Provisions
- F4D81a — Unisex facility requirement for full height doors and partitions
- F4D82c — Door removable from outside if less than 1.2m between pan and doorway

APPLICATIONS

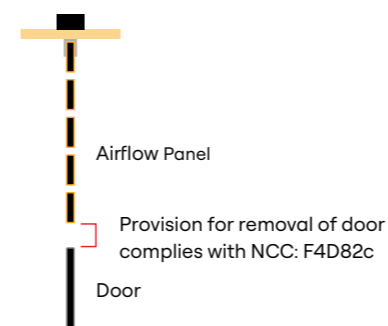
- Schools and universities
- End-of-trip facilities
- Shopping centres
- Sport and gym change rooms
- Defence ablution blocks
- Corporate amenities
- Recreational amenities

FEATURES & BENEFITS

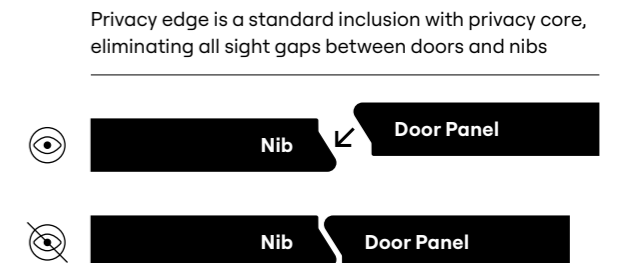
- Cost-effective privacy partitioning system
- Nibs and divisional panels are mounted to the floor and fixed to the ceiling to maximise privacy
- DuraCube privacy edge is a standard inclusion
- Slotted panel above door enables ventilation
- DuraSafe 13mm compact laminate construction
- No edge strip required as compact laminate black core is visible on the edges
- Impact-resistant construction
- Vandal-resistant surface
- Waterproof, suitable for hose cleaning
- Easy to clean and sanitise
- Reduced maintenance time and cost
- Overall system height 2340mm to 3000mm AFFL

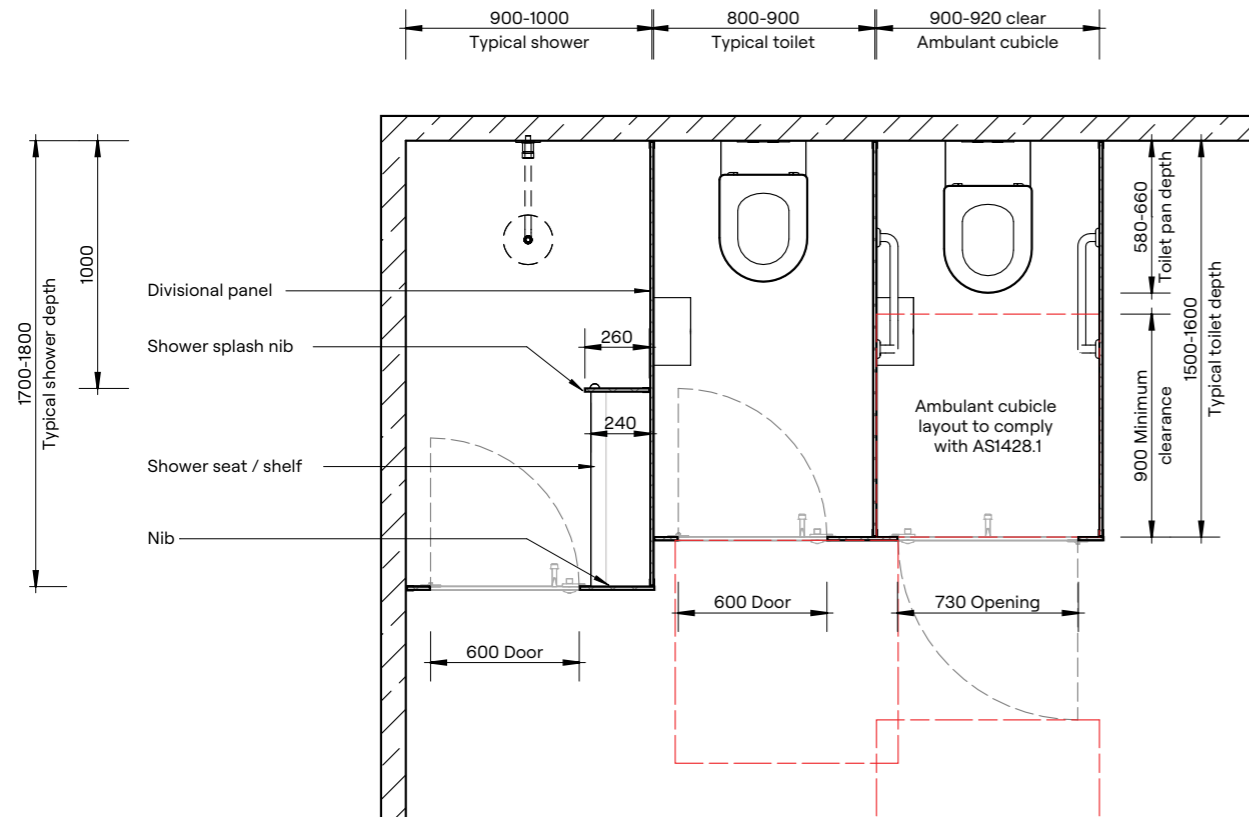
“The full height privacy core partitioning system provides visual privacy and ventilation at an economical price.”

Harry Simpson
Sales Manager, DuraCube

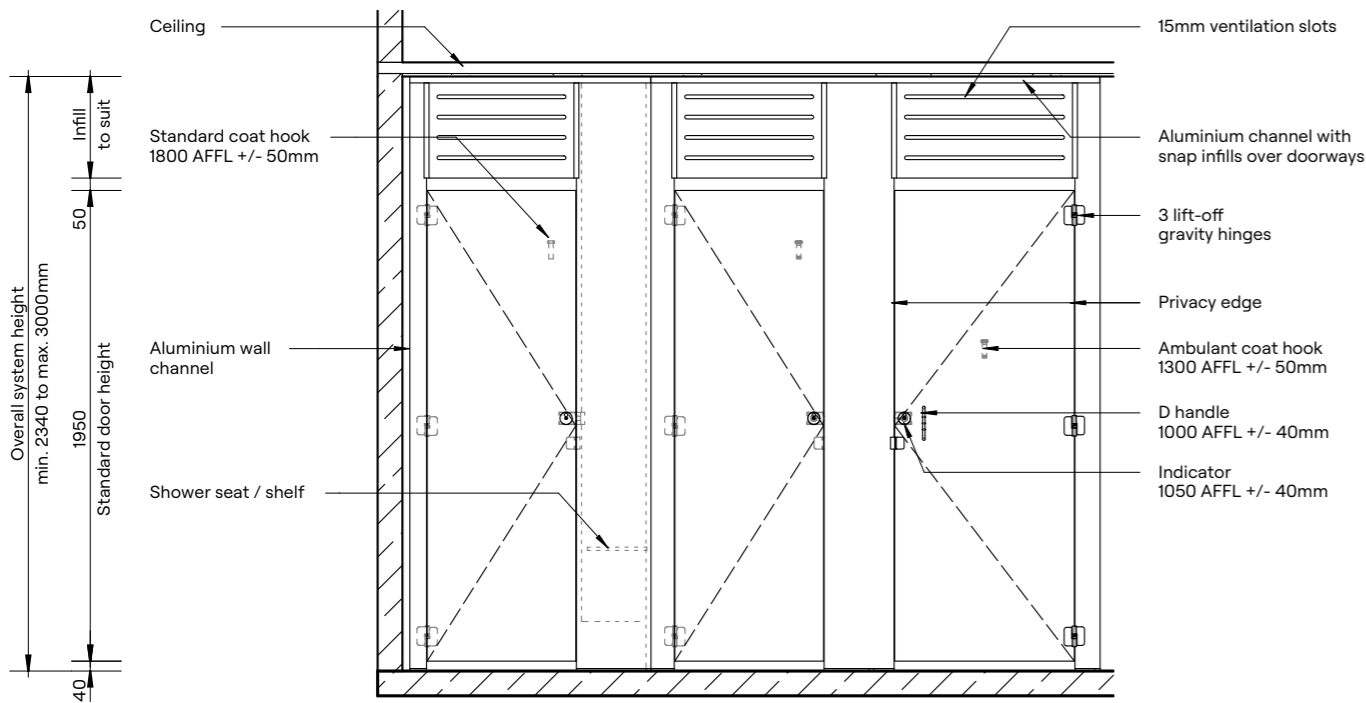


Slotted Panel Detail



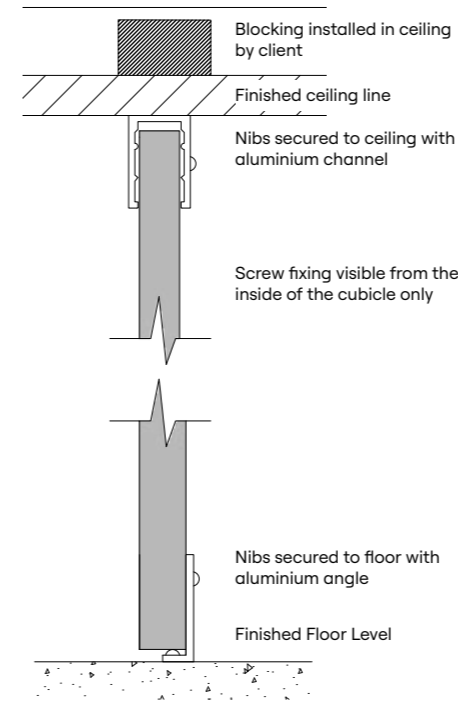


Plan

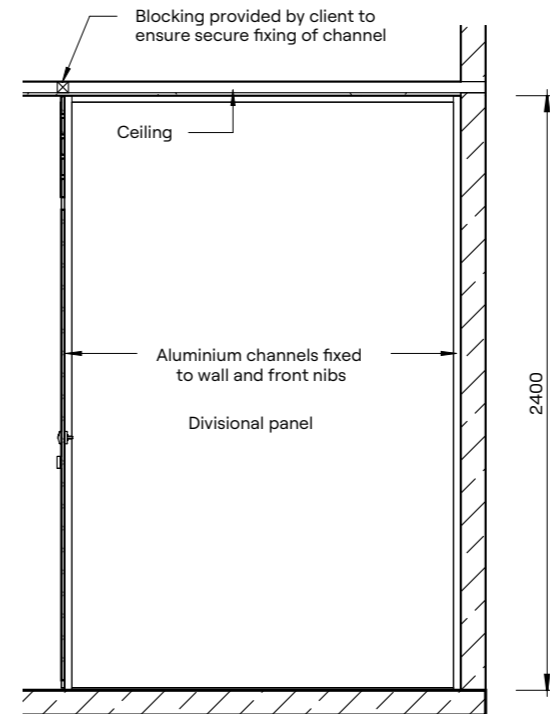


Elevation

Ceiling Fixing Detail



Floor Mounting Detail



Section

HOW TO SPECIFY

Product
DuraCube full height privacy core (FHPC)

Door and Panel Construction Material
DuraSafe 13mm compact laminate

Construction
Privacy edge angled door and nibs
Privacy core ventilation panel

Hardware
Viva satin chrome hardware is standard
Other hardware is available – see page 87

Ceiling Fixing
Aluminium channel
Colour – Oyster Grey powder coat

Floor Mounting
Aluminium angle
Colour – Oyster Grey powder coat

Overall System Height
Min. 2340mm to Max. 3000mm AFFL



Our full height privacy ultra is a wet area partitioning system is designed for high use areas where privacy is of the highest concern, such as schools, swimming pools and sporting facilities.

Floor-to-ceiling doors, panels and nibs create a streamlined design with minimal gaps providing a low maintenance and ultra private solution.

REGULATORY COMPLIANCE

- NCC 2022 Part F — Deem to Satisfy Provisions
- F4D81a — Unisex facility requirement for full height doors and partitions.
- F4D82c — Door removable from outside if less than 1.2m between pan and doorway.

APPLICATIONS

- Schools and universities
- End-of-trip facilities
- Shopping centres
- Sport and gym change rooms
- Defence ablution blocks
- Corporate amenities
- Recreational amenities

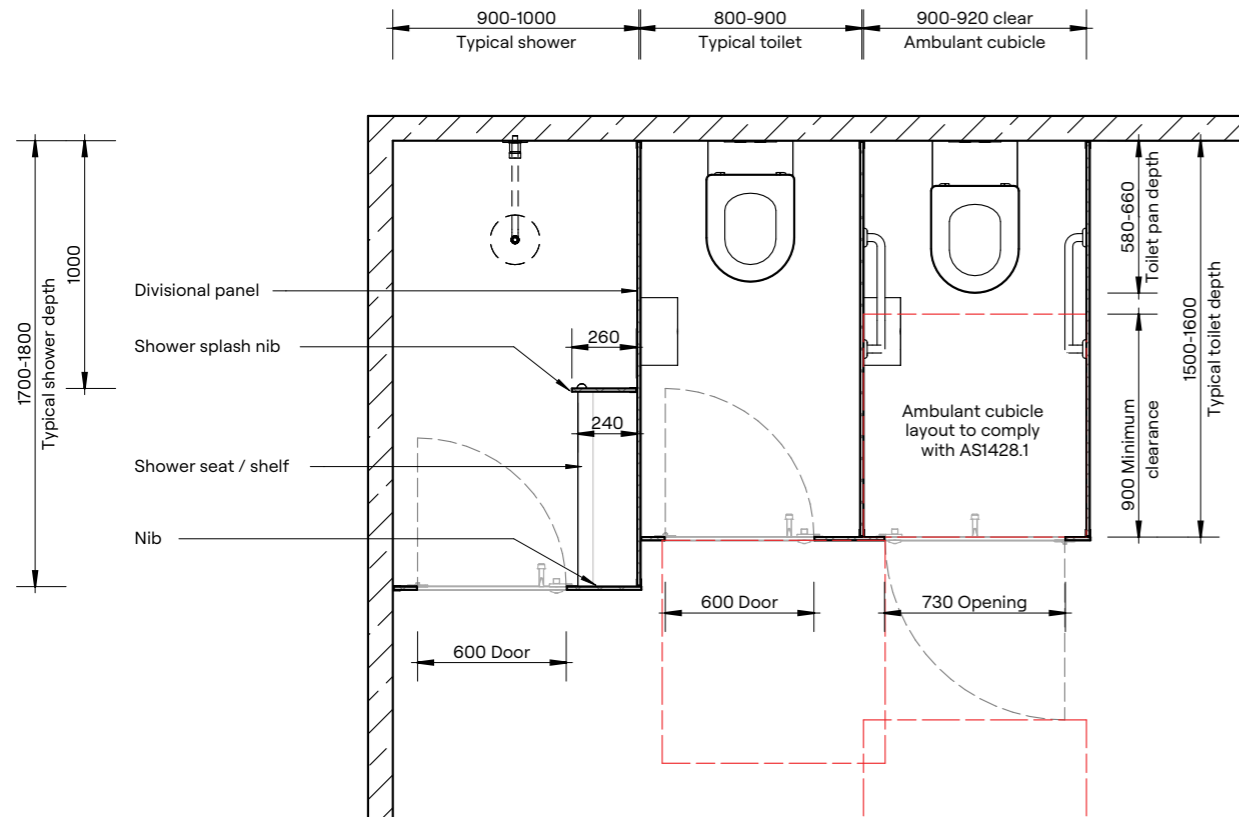
FEATURES & BENEFITS

- Modern, minimalist design with clean lines
- Nibs and divisional panels are mounted to the floor and fixed to the ceiling to maximise privacy
- DuraCube privacy edge is a standard inclusion
- No sight gaps around panels, nibs and doors
- DuraSafe 13mm compact laminate construction
- No edge strip required as compact laminate black core is visible on the edges
- Impact-resistant construction
- Vandal-resistant surface
- Waterproof, suitable for hose cleaning
- Easy to clean and sanitise
- Reduced maintenance time and cost
- Overall system height 2100 to 3000mm AFFL

“The full height privacy ultra partitioning system provides visual privacy in an elegant, sleek design.”

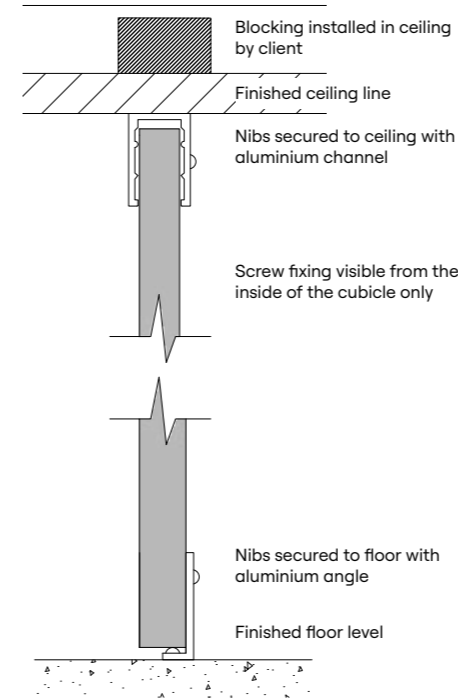
Nick Serafin
Marketing Manager, DuraCube



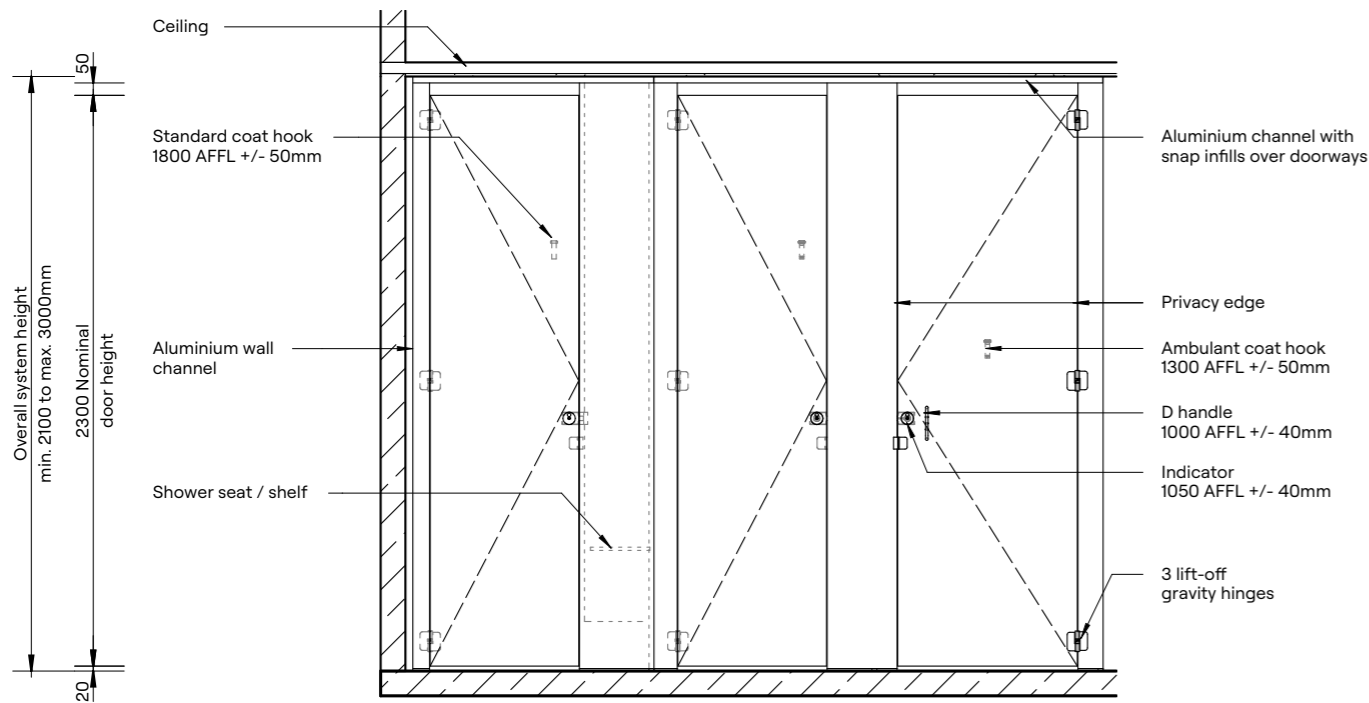


Plan

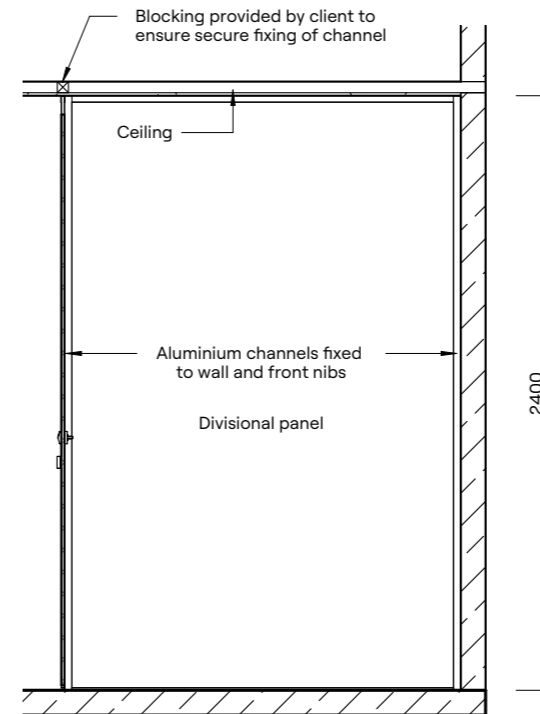
Ceiling Fixing Detail



Floor Mounting Detail



Elevation



Section

HOW TO SPECIFY	
Product	DuraCube full height privacy ultra (FHPU)
Door and Panel Construction Material	DuraSafe 13mm compact laminate
Construction	Privacy edge angled door and nib
Hardware	Viva satin chrome hardware is standard Other hardware is available – see page 87
Ceiling Fixing	Aluminium channel Colour – Oyster Grey powder coat
Floor Mounting	Aluminium angle Colour – Oyster Grey powder coat
Overall System Height	Min. 2100mm to Max. 3000mm AFFL



The full height privacy max is a wet area partitioning system that provides a cost-effective alternative to traditional stud wall construction.

Privacy Max cubicles ensure maximum visual and acoustic privacy while also allowing ventilation.

REGULATORY COMPLIANCE

- NCC 2022 Part F — Deem to Satisfy Provisions
- F4D81a — Unisex facility requirement for full height doors and partitions.
- F4D82c — Door removable from outside if less than 1.2m between pan and doorway.

APPLICATIONS

- Schools and universities
- End-of-trip facilities
- Shopping centres
- Sport and gym change rooms
- Defence ablution blocks
- Corporate amenities
- Recreational amenities

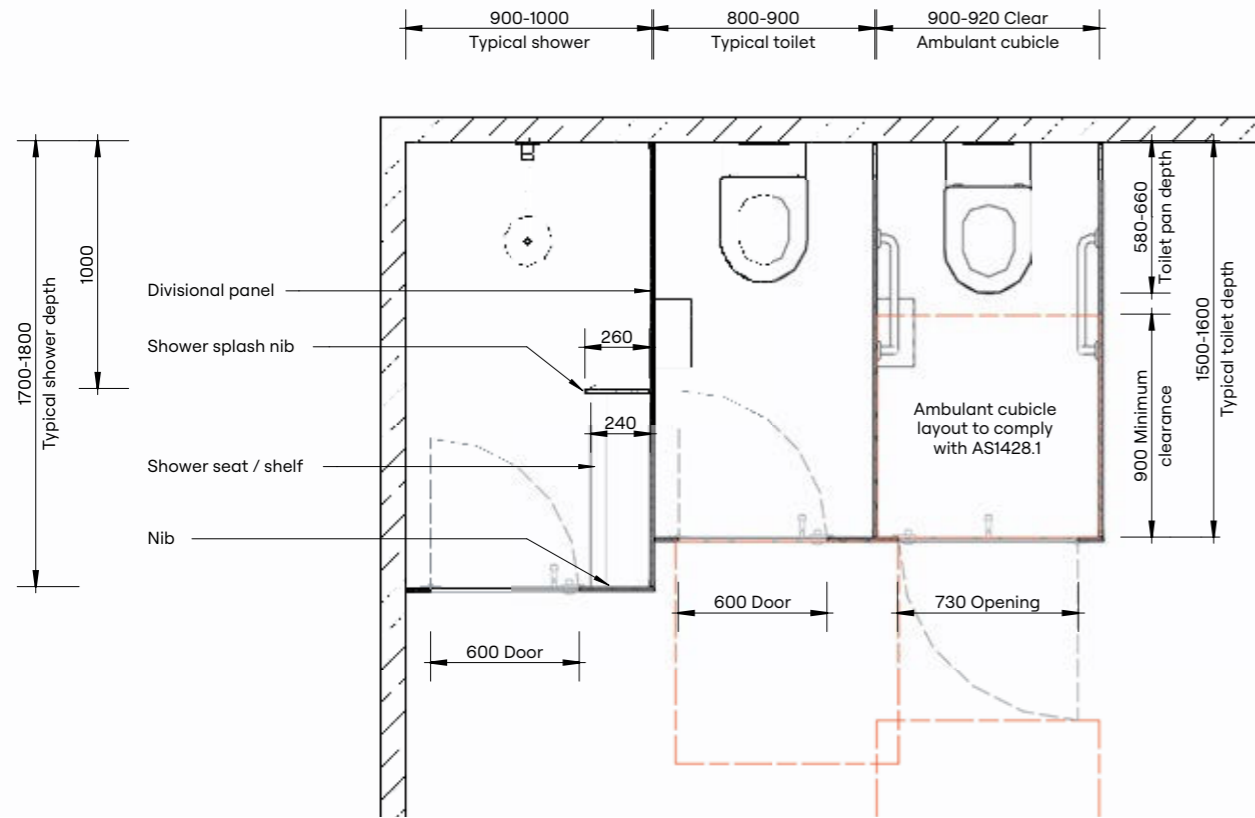
FEATURES & BENEFITS

- Efficient alternative to stud wall construction
- Nibs and divisional panels are mounted to the floor and fixed to the ceiling to maximise privacy
- Acoustic rubber seal around doors and openings
- No sight gaps around panels, nibs and doors
- DuraSafe 13mm compact laminate construction
- No edge strip required as compact laminate black core is visible on the edges
- Impact-resistant construction
- Vandal-resistant surface
- Waterproof, suitable for hose cleaning
- Easy to clean and sanitise
- Reduced maintenance time and cost
- Overall system height 2340 to 3000mm AFFL

“The full height privacy max partitioning system eliminates all gaps around panels and doors to increase the comfort of its users.”

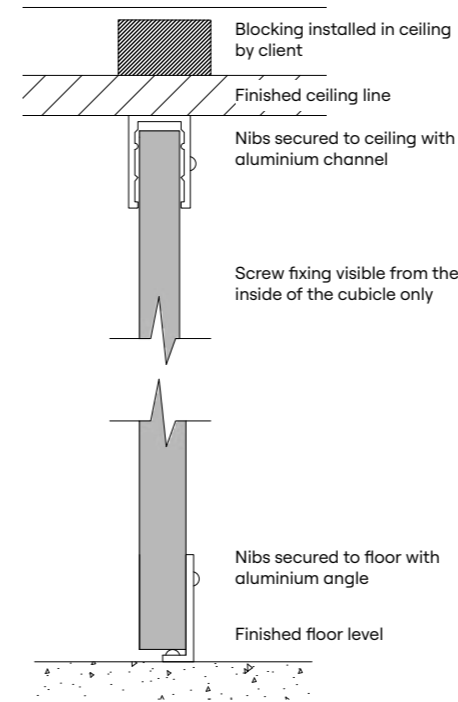
Alana Jackson
Specification Manager, DuraCube



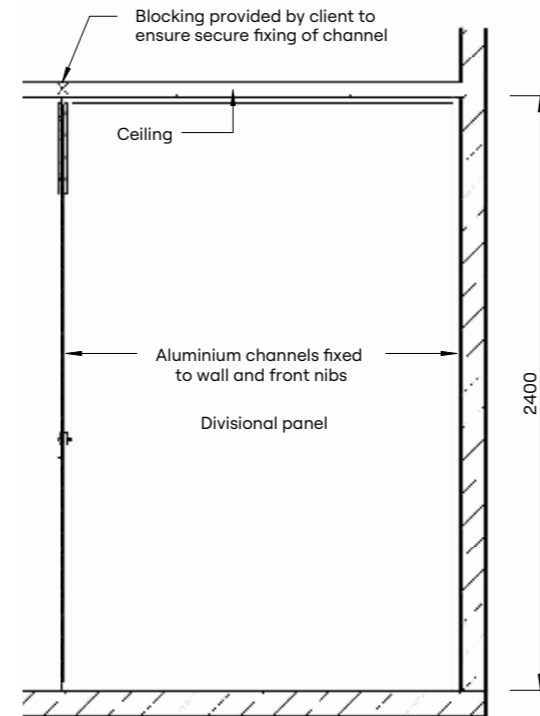


Plan

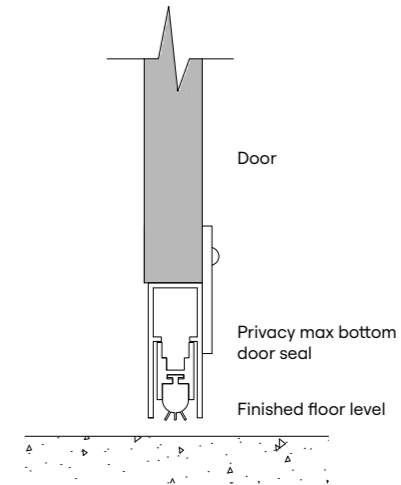
Ceiling Fixing Detail



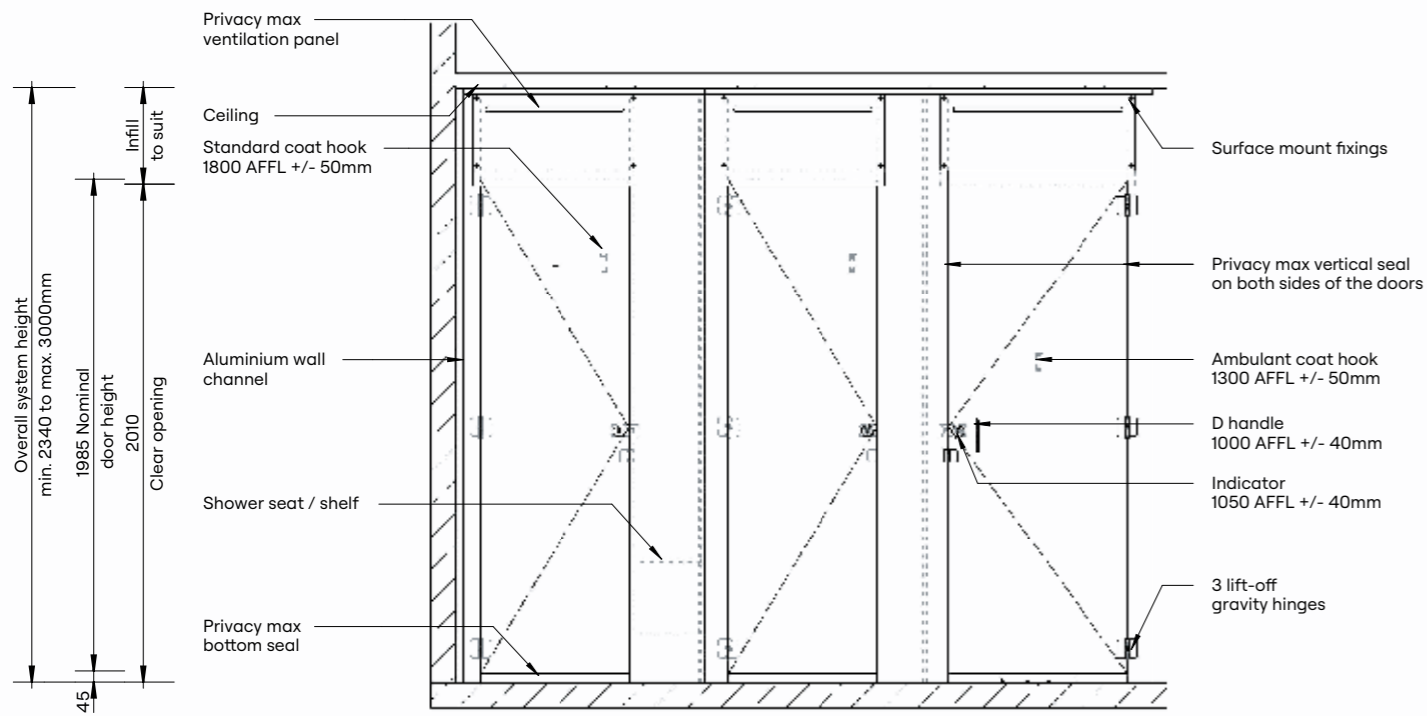
Floor Mounting Detail



Section



Door Seal Detail



Elevation

HOW TO SPECIFY

Product
DuraCube full height privacy max (FHPM)

Door and Panel Construction Material
DuraSafe 13mm compact laminate

Construction
Privacy max door seals
Privacy max ventilation panel

Hardware
Viva satin chrome hardware is standard
Other hardware is available – see page 87

Ceiling Fixing
Aluminium channel
Colour – Oyster Grey powder coat

Floor Mounting
Aluminium angle
Colour – Oyster Grey powder coat

Overall System Height
Min. 2340mm to Max. 3000mm AFFL

SECTION 2

PRIVACY PANELS

Overview	44
Privacy Panel – Wall Mount	45-47
Privacy Panel – Pedestal Mount	45-47
Privacy Panel – Childcare	45-47
Privacy Panel – Full Height	45-47
Privacy Panel – Post Fixed	45-47





DuraCube privacy panels are a versatile wet area screening solution providing privacy in open plan bathrooms and change rooms.

Privacy panels are usually installed between urinals or as a substitute for an airlock.

Childcare privacy panels separate toilets at early learning centres and preschools.

Our range includes wall mount, pedestal mount, childcare, full height and post fixed.

APPLICATIONS

- Schools and universities
- End-of-trip facilities
- Shopping centres
- Sport and gym change rooms
- Defence ablution blocks
- Corporate amenities
- Recreational amenities

FEATURES & BENEFITS

- Privacy panels are easy to install
- Unobtrusive design
- Compact laminate colours will coordinate with partitioning system colour scheme
- Compact laminate is vandal and Impact-resistant construction material
- Waterproof, suitable for hose cleaning
- Easy to clean and sanitise, reducing maintenance time and cost
- Oyster Grey powder coat aluminium extrusions with stainless steel fixings

“The DuraCube privacy panels range is quick and easy to install, quick and easy to clean, and allows consistency right throughout a project’s bathroom joinery systems.”

Ben Simpson
General Manager, DuraCube



Privacy Panel – Wall Mount



Privacy Panel – Pedestal Mount



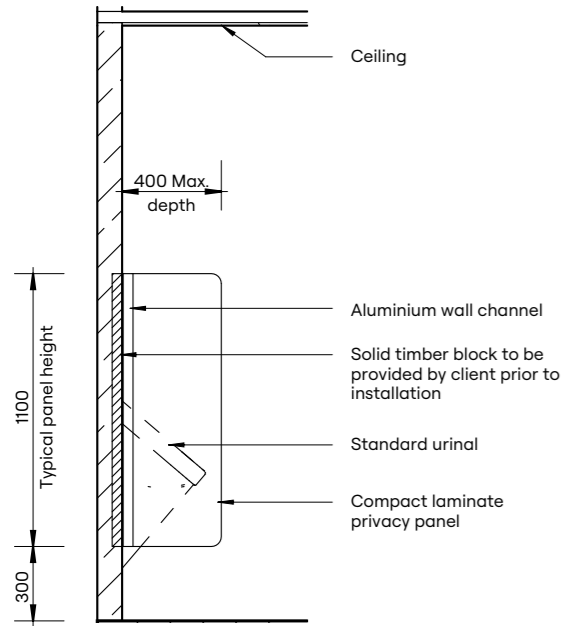
Privacy Panel – Childcare



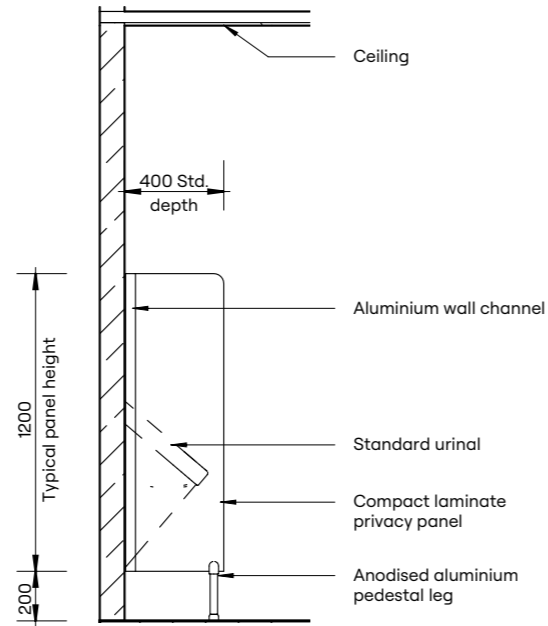
Privacy Panel – Full Height



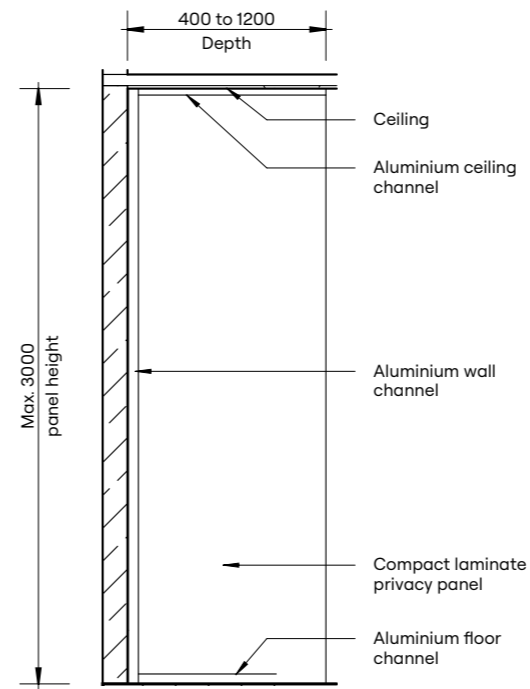
Privacy Panel – Post Fixed



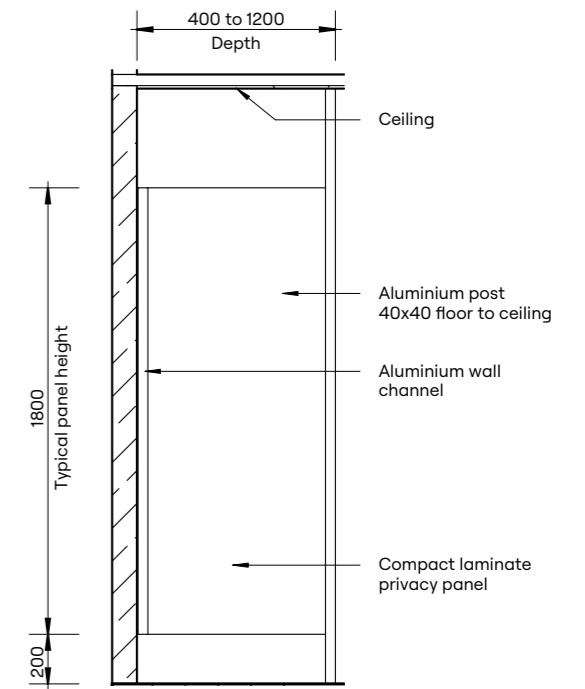
Privacy Panel – Wall Mount



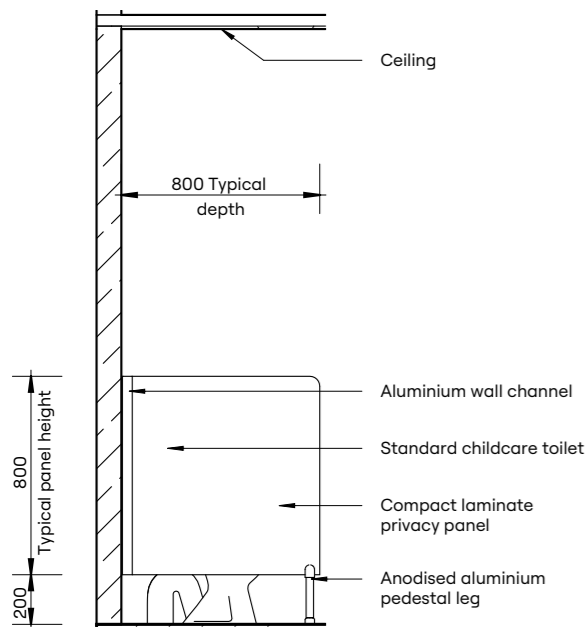
Privacy Panel – Pedestal Mount



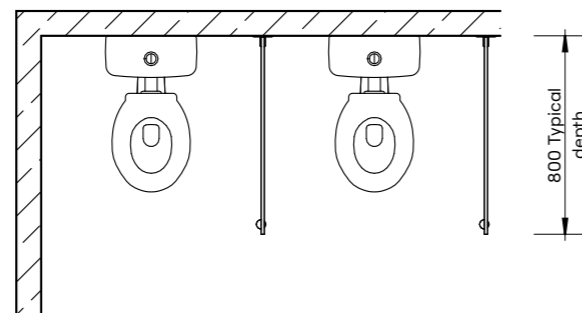
Privacy Panel – Full Height



Privacy Panel – Post Fixed



Privacy Panel – Childcare



HOW TO SPECIFY				
Product Name	Materials	Typical Height	Typical Width	Floor Mount/Ceiling Fixed
Privacy Panel – Wall Mount (PWM)	DuraSafe 13mm Compact Laminate	1400mm AFFL	400mm	Wall mount only with aluminium T-channel
Privacy Panel – Pedestal Mount (PPM)		1400mm AFFL	400mm	Floor mount with adjustable 200mm aluminium pedestal legs
Privacy Panel – Childcare (PCC)		1000mm AFFL	800mm	Floor mount with adjustable 200mm aluminium pedestal legs
Privacy Panel – Full Height (PFH)		To Ceiling Max. 3000mm	400mm to 1200mm	Floor mount with aluminium angle Ceiling fixed with aluminium channel
Privacy Panel – Post Fixed (PPF)		2000mm AFFL	400mm to 1200mm	40 × 40mm floor-to-ceiling square post

Please Note: Custom sizes and solutions are available upon request. Contact our sales team for assistance.

SECTION 3

LOCKER SYSTEMS

Overview	50
Lockers – Plinth Mounted	51
Lockers – Wall Mounted	52
Lockers – Bench Mounted	53
Lockers – Shoe Box Mounted	54
Lockers – Shoe Box Seating Mounted	55
Lockers – Plinth Mounted End-of-Trip	56
Lockers – Wall Mounted End-of-Trip	58
Lockers – Shoe Box Mounted End-of-Trip	60





DuraCube lockers are constructed from DuraSafe 13mm compact laminate, making them suitable for wet and dry locations.

Compact laminate is vandal, impact, and water-resistant with a low maintenance surface.

Coordinate your locker colours with partitioning systems, bench seating and vanities.

APPLICATIONS

- Schools and universities
- End-of-trip facilities
- Sport and gym change rooms
- Defence ablution blocks

“The DuraCube locker range has expanded to accommodate evolving trends, making it fast and easy to design and construct with bathroom joinery systems.”

Nick Serafin
Marketing Manager, DuraCube

FEATURES & BENEFITS

- DuraSafe 13mm compact laminate construction requires no edge strip due to black core edge
- Locker carcass constructed from either:
 - water-resistant white 16mm HMR board or
 - 100% waterproof white 16mm PVC board
- Black PVC edge tape on carcass to match black core on compact laminate panels and doors
- Four door colours can be used to create a pattern
- Shelving and vent options are available
- Coat rail is a standard inclusion
- One to four doors are optional per locker tower

LOCK OPTIONS

- Electronic Touch Pad Lock (ETP)
- Mechanical Combination Lock (KL20)
- Padlock Hasp (PH)
- Standard Key Lock (KL)
- Electronic Button Lock (KL1000)

View lock options at:
duracube.com.au/bathroom-joinery-hardware-accessories

Lockers – Plinth Mounted



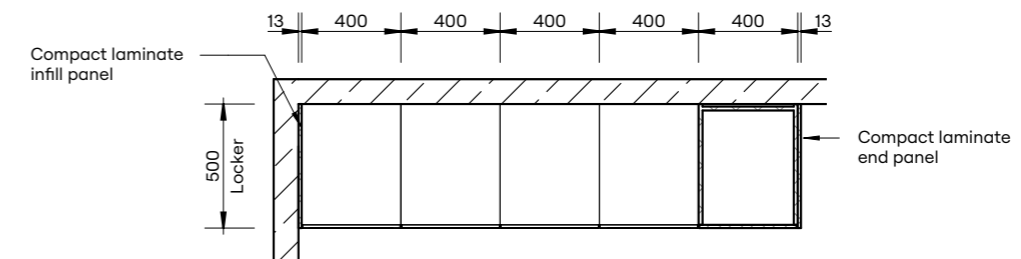
HOW TO SPECIFY

Product
DuraCube locker systems – plinth mounted (LPM)

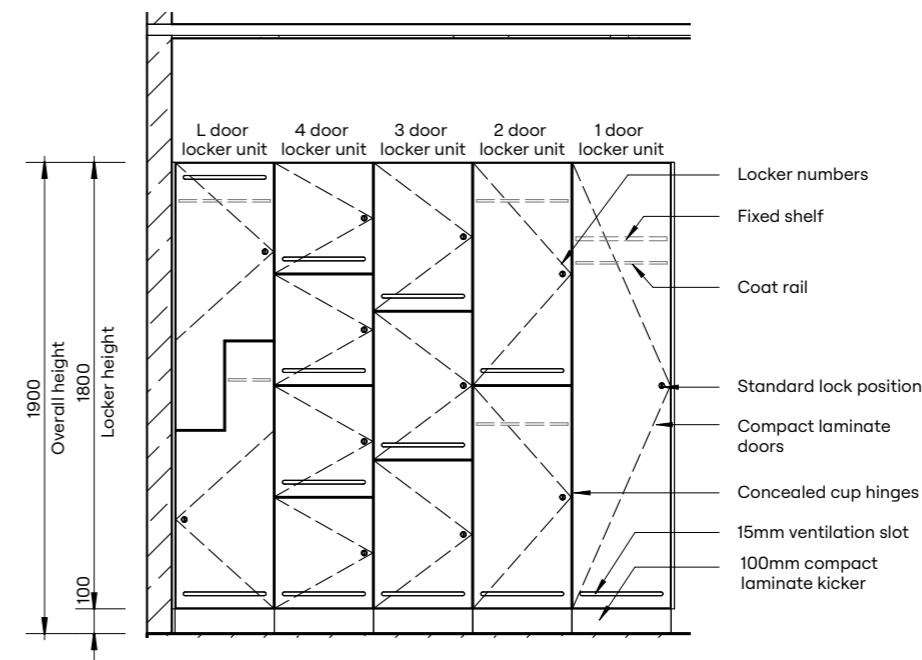
Door and Panel Construction Material
DuraSafe 13mm compact laminate

Internal Carcass Construction Material
Select either:
Dry area lockers – white or black 16mm HMR board
Wet area lockers – white 16mm PVC board

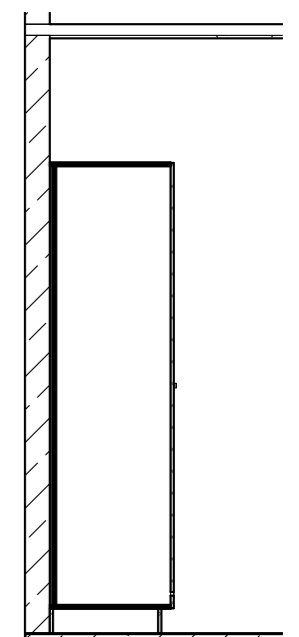
Lock
Insert lock option here – see page 50



Plan



Elevation



Section



Lockers – Wall Mounted



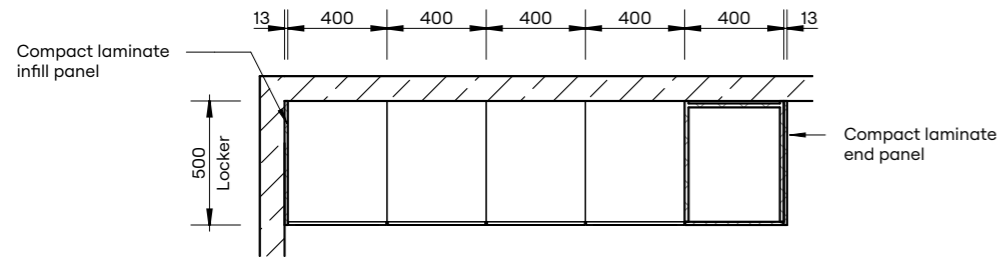
HOW TO SPECIFY

Product
DuraCube locker systems – wall mounted (LWM)

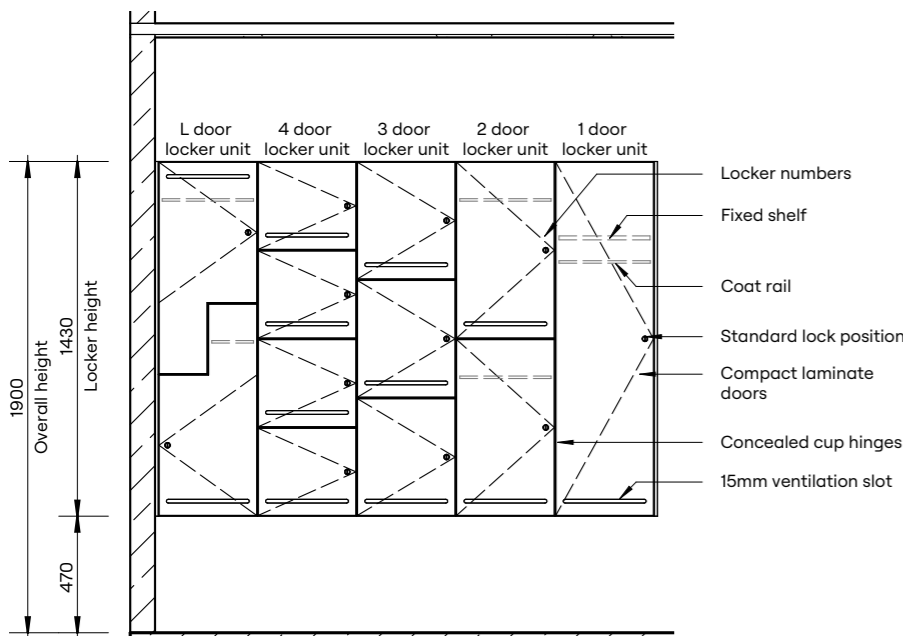
Door and Panel Construction Material
DuraSafe 13mm compact laminate

Internal Carcass Construction Material
Select either:
Dry area lockers – white or black 16mm HMR board
Wet area lockers – white 16mm PVC board

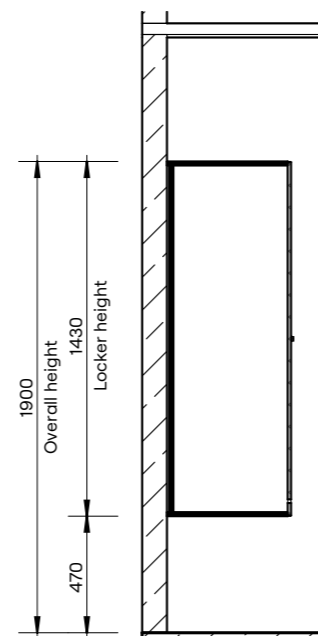
Lock
Select lock option here – see page 50



Plan



Elevation



Section

Lockers – Bench Mounted



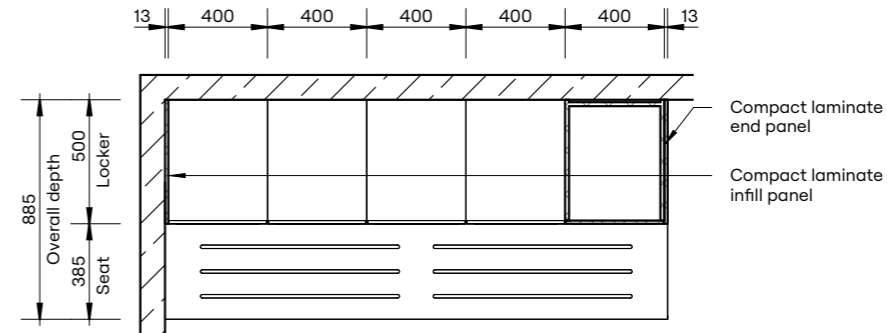
HOW TO SPECIFY

Product
DuraCube locker systems – bench mounted (LBM)

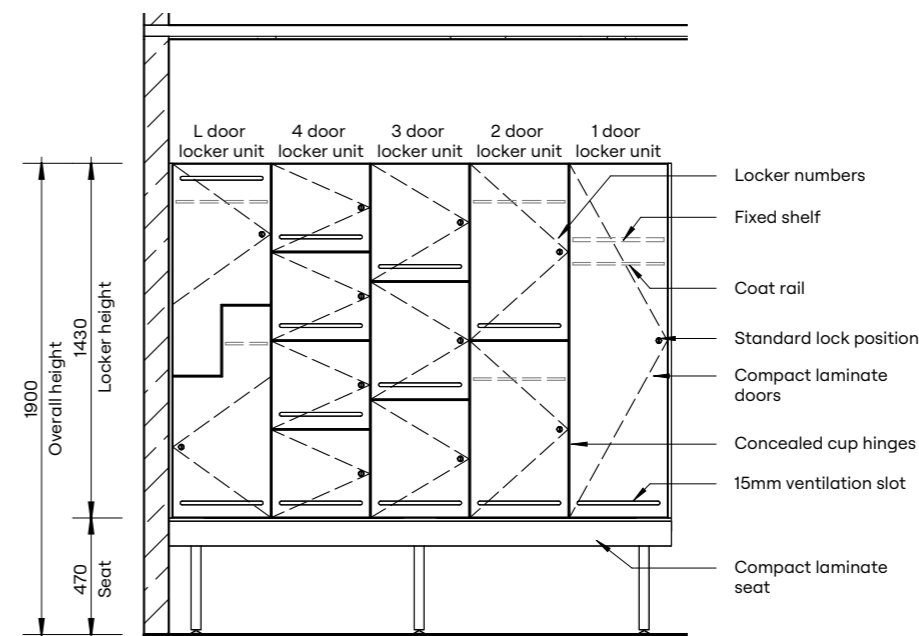
Door and Panel Construction Material
DuraSafe 13mm compact laminate

Internal Carcass Construction Material
Select either:
Dry area lockers – white or black 16mm HMR board
Wet area lockers – white 16mm PVC board

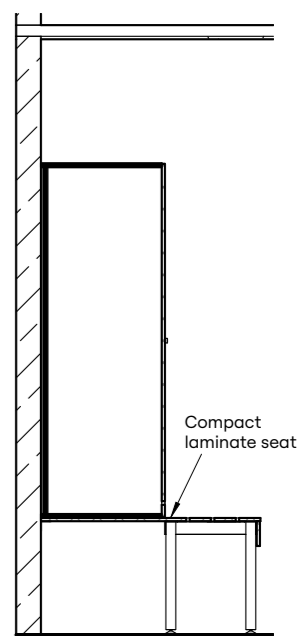
Lock
Select lock option here – see page 50



Plan



Elevation



Section



Lockers – Shoe Box Mounted



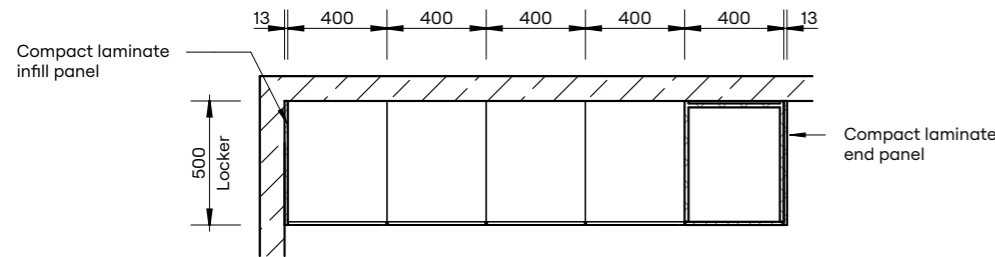
HOW TO SPECIFY

Product
DuraCube locker systems – shoe box mounted (LSBM)

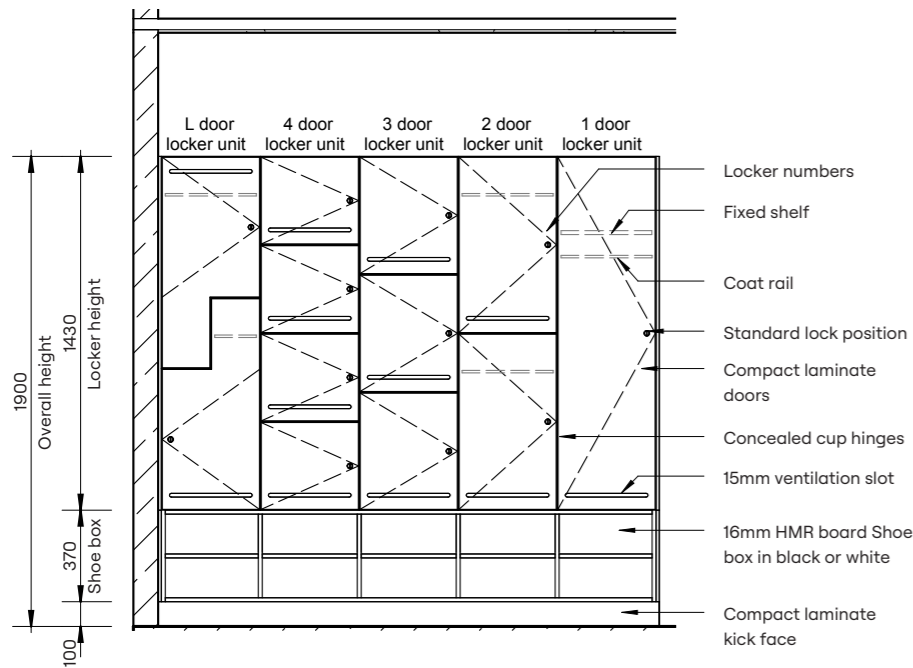
Door and Panel Construction Material
DuraSafe 13mm compact laminate

Internal Carcass Construction Material
Select either:
Dry area lockers – white or black 16mm HMR board
Wet area lockers – white 16mm PVC board

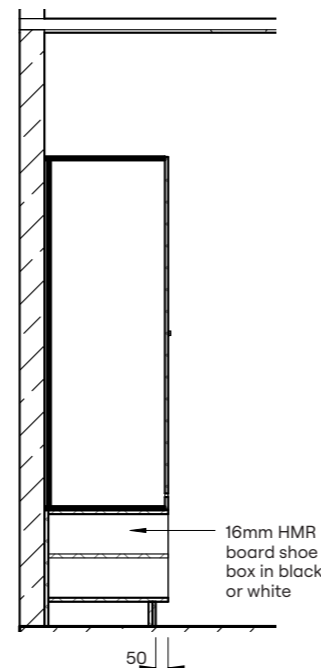
Lock
Select lock option here – see page 50



Plan



Elevation



Section

Lockers – Shoe Box Seating Mounted



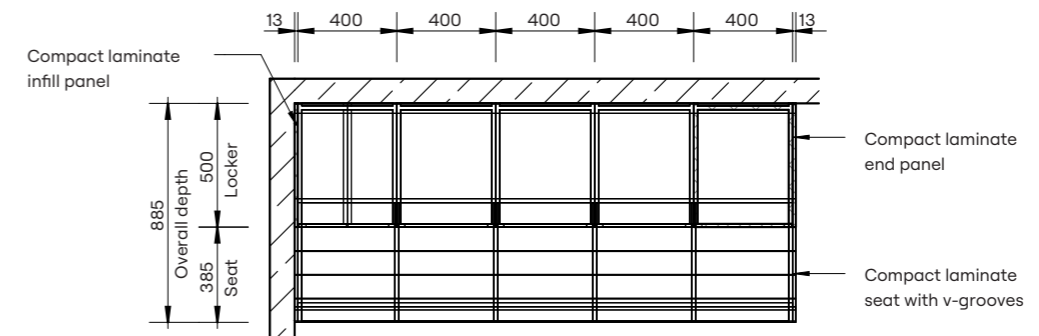
HOW TO SPECIFY

Product
DuraCube locker systems – shoe box seating mounted (LSBSM)

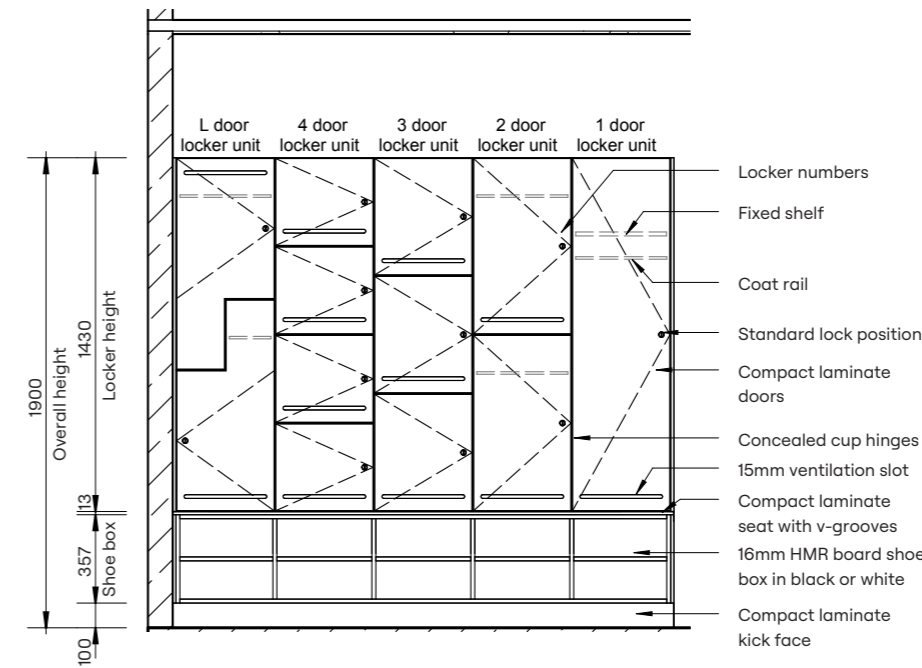
Door and Panel Construction Material
DuraSafe 13mm compact laminate

Internal Carcass Construction Material
Select either:
Dry area lockers – white or black 16mm HMR board
Wet area lockers – white 16mm PVC board

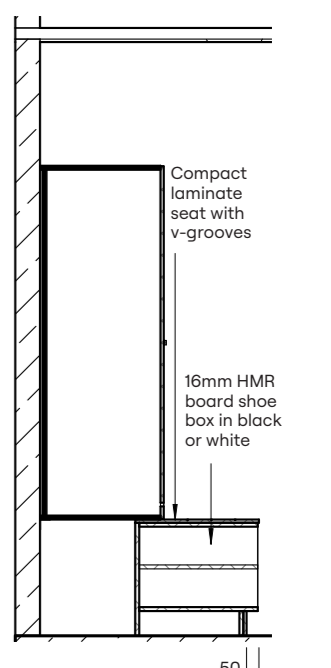
Lock
Select lock option here – see page 50



Plan



Elevation



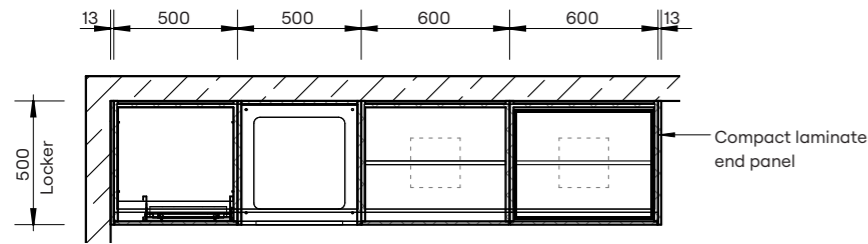
Section



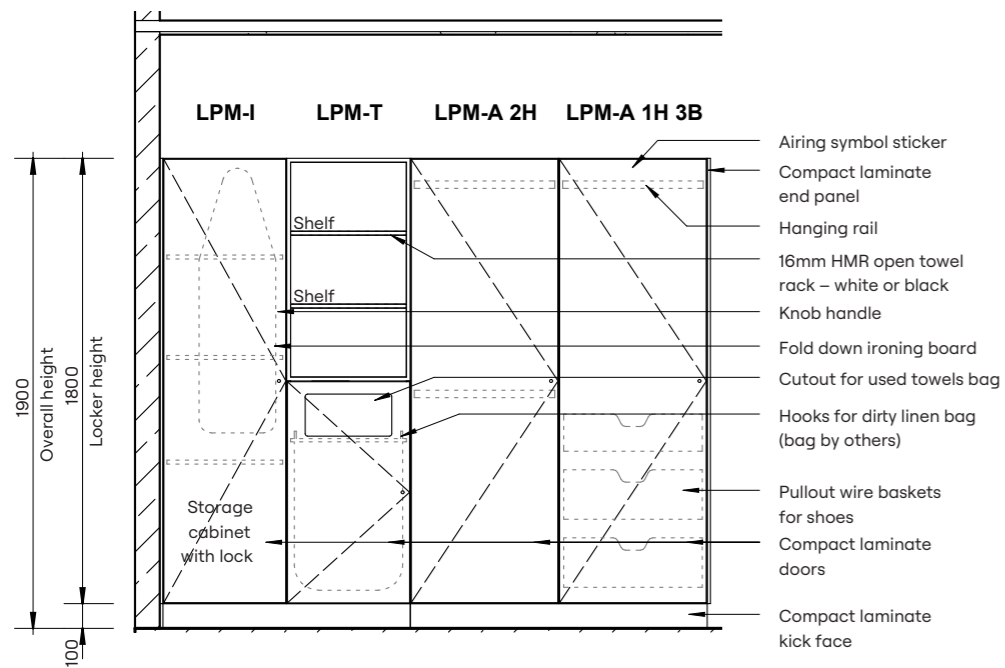
Lockers – Plinth Mounted End-of-Trip



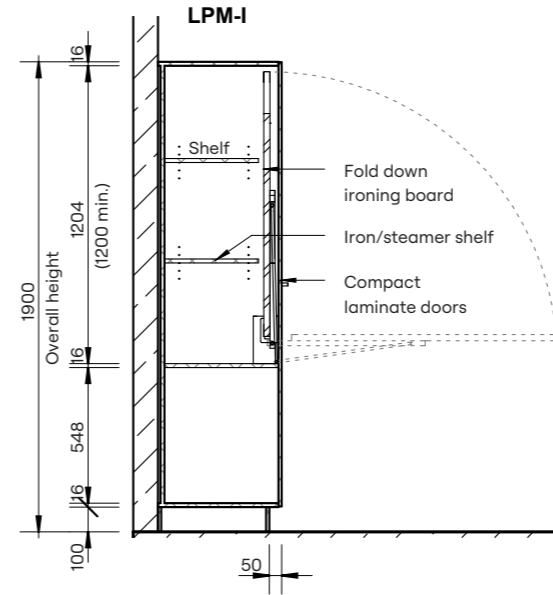
HOW TO SPECIFY	
Product	DuraCube locker systems – plinth mounted end-of-trip (LPM-EOT)
Door and Panel Construction Material	DuraSafe 13mm compact laminate
Internal Carcass Construction Material	Select either: Dry area lockers – white or black 16mm HMR board Wet area lockers – white 16mm PVC board
Lock	Select lock option here – see page 50



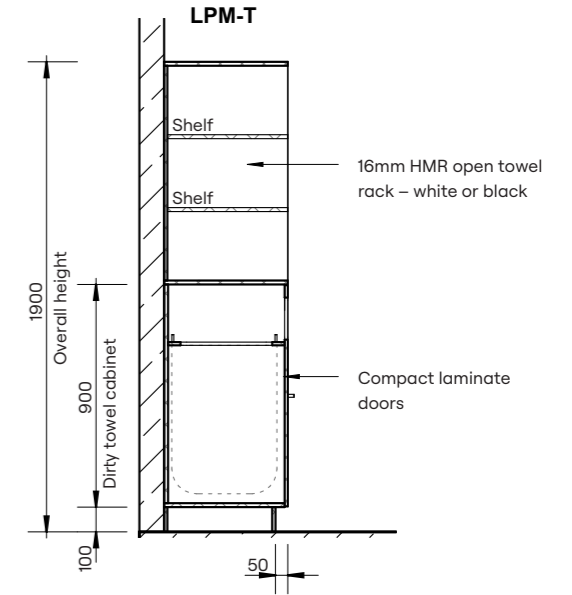
Plan



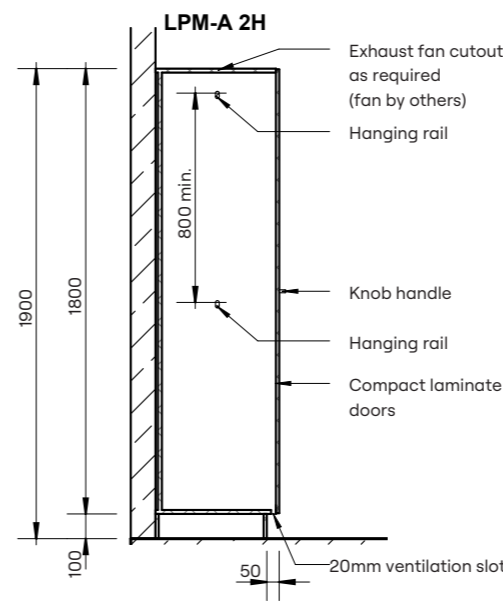
Elevation



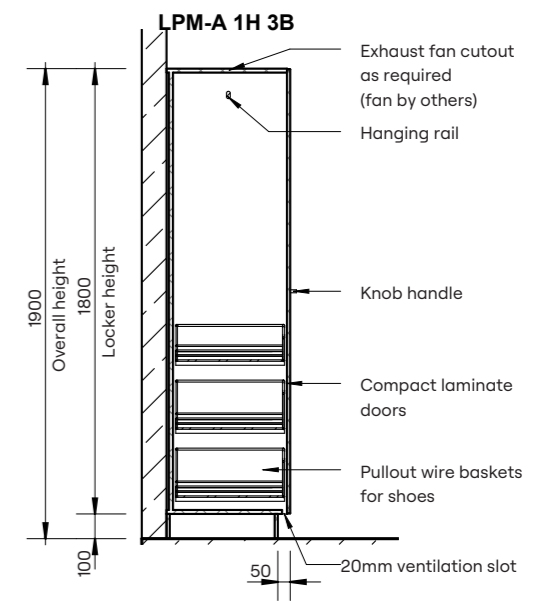
Section



Section



Section



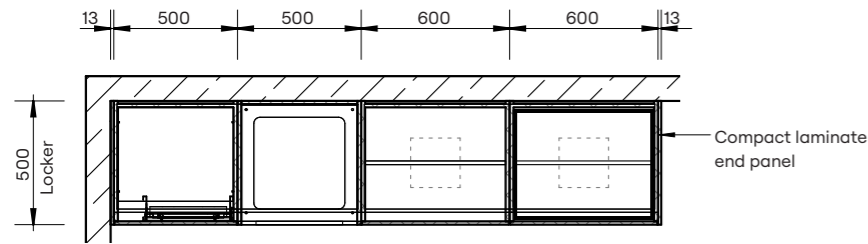
Section



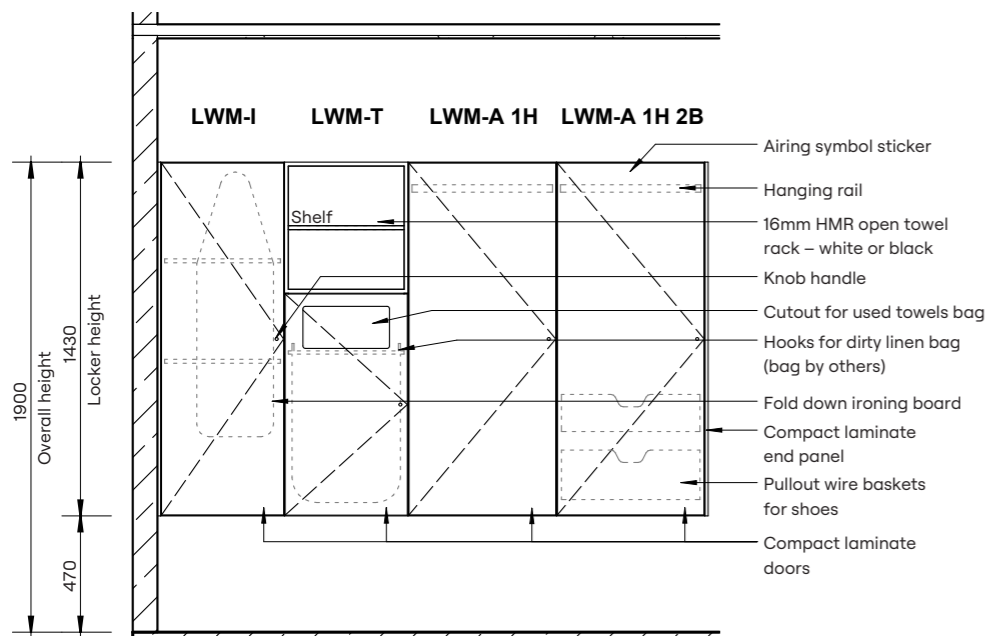
Lockers – Wall Mounted End-of-Trip



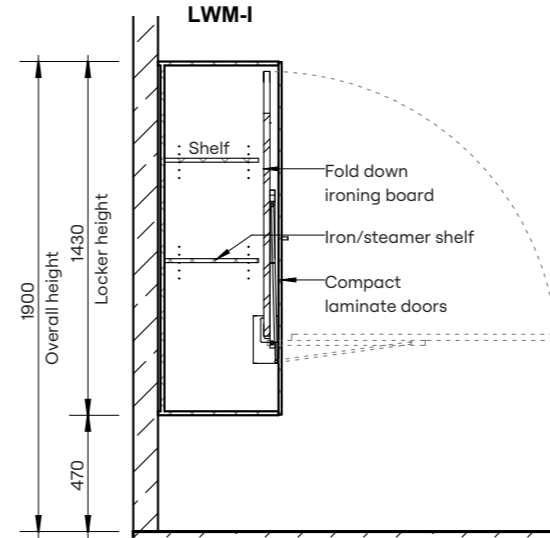
HOW TO SPECIFY	
Product	DuraCube locker systems – wall mounted end-of-trip (LWM-EOT)
Door and Panel Construction Material	DuraSafe 13mm compact laminate
Internal Carcass Construction Material	Select either: Dry area lockers – white or black 16mm HMR board Wet area lockers – white 16mm PVC board
Lock	Select lock option here – see page 50



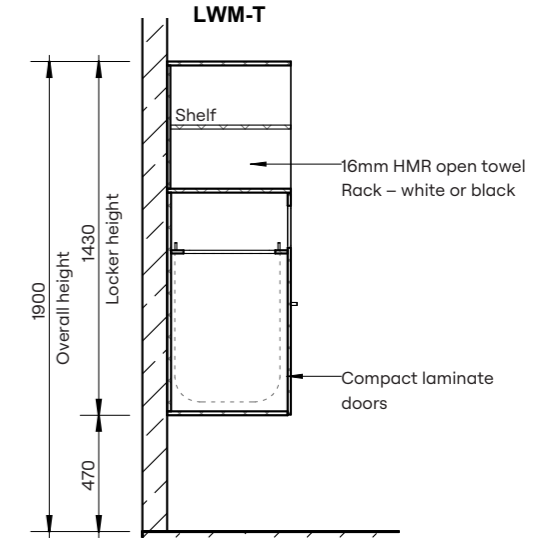
Plan



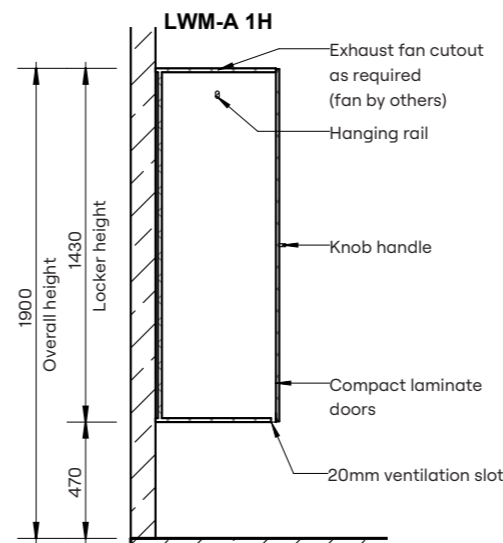
Elevation



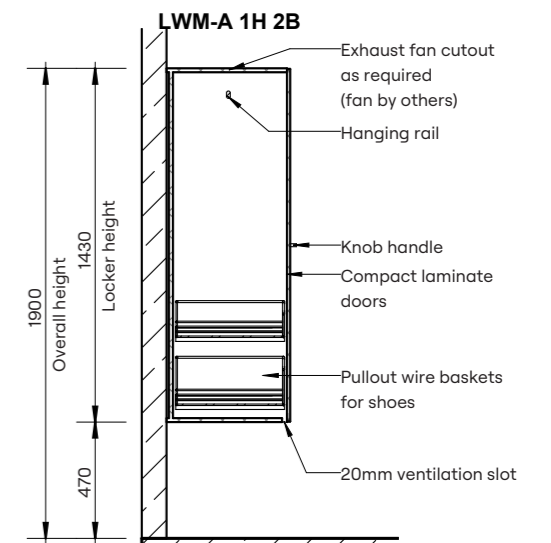
Section



Section



Section



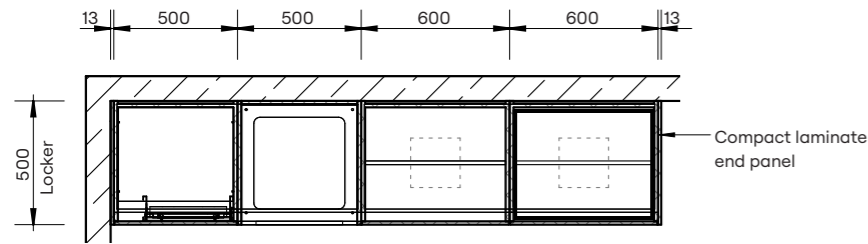
Section



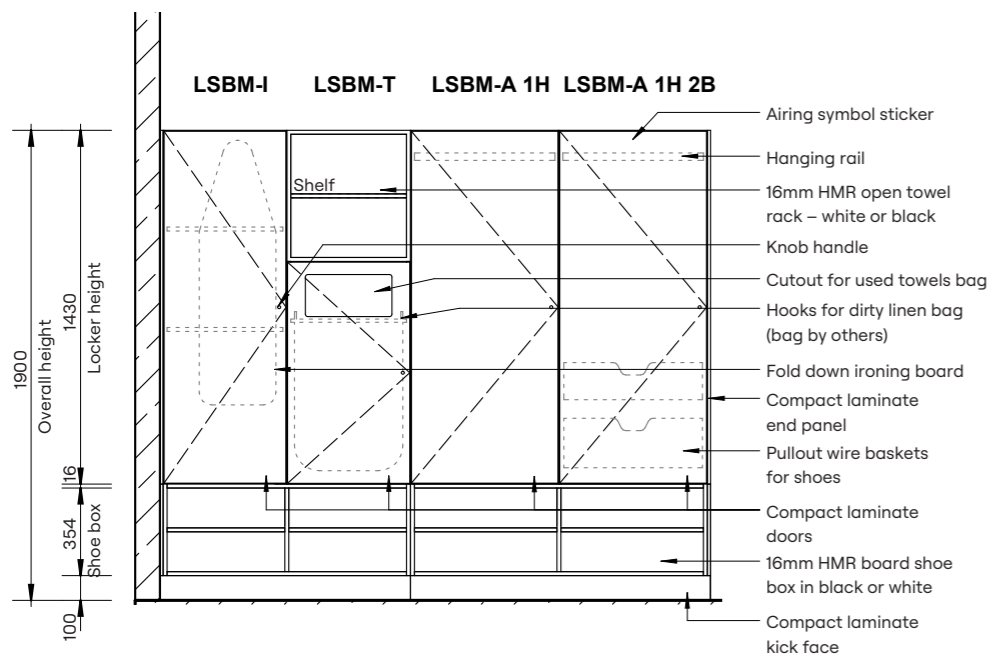
Lockers – Shoe Box Mounted End-of-Trip



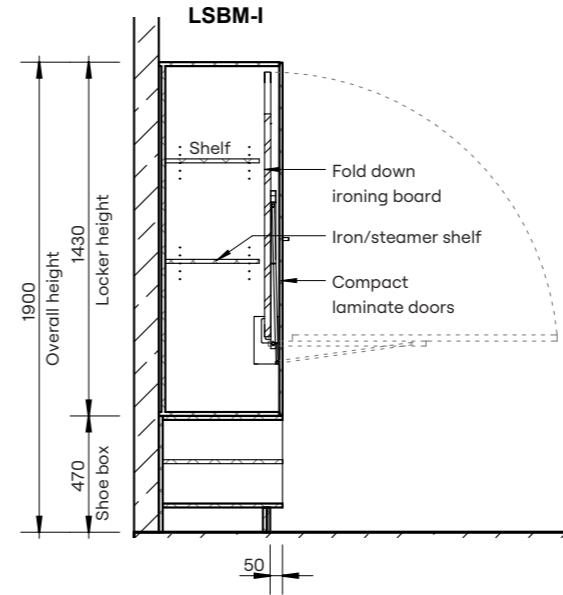
HOW TO SPECIFY	
Product	DuraCube locker systems – shoe box mounted end-of-trip (LSBM-EOT)
Door and Panel Construction Material	DuraSafe 13mm compact laminate
Internal Carcass Construction Material	Select either: Dry area lockers – white or black 16mm HMR board Wet area lockers – white 16mm PVC board
Lock	Select lock option here – see page 50



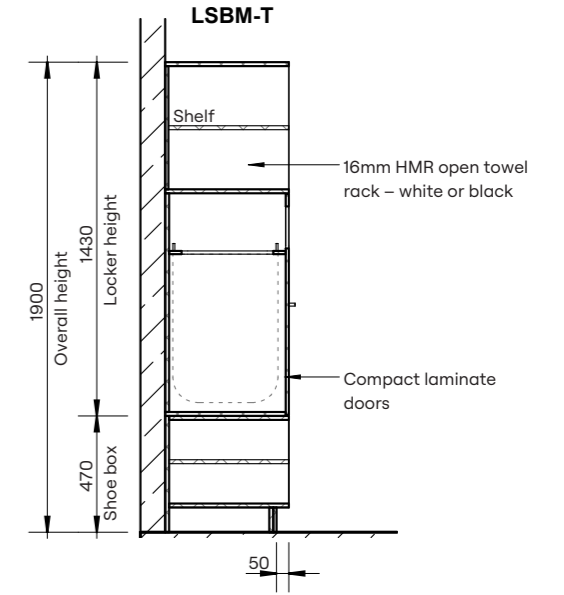
Plan



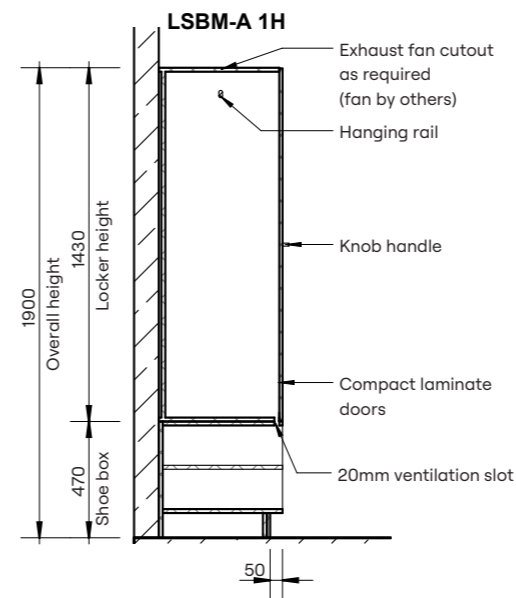
Elevation



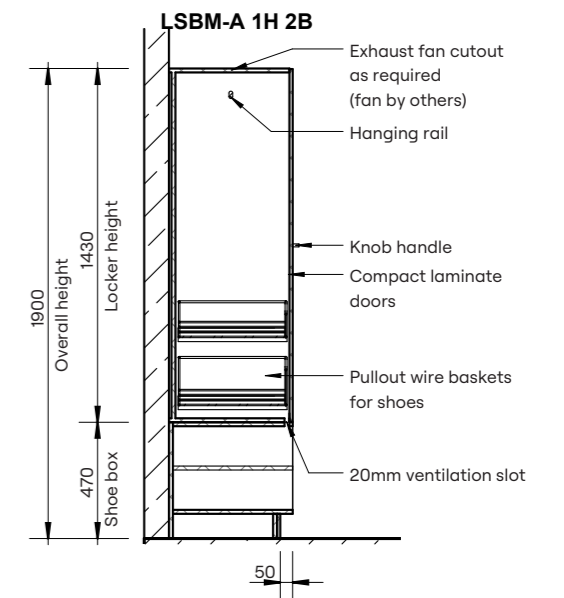
Section



Section



Section



Section

SECTION 4

BENCH SEATING

Overview	64
Bench Seating – Island	65
Bench Seating – Wall with Shelving	66
Bench Seating – Wall with Coat Rail	67
Bench Seating – Shoe Box Island	68
Bench Seating – Shoe Box Wall with Shelving	69
Bench Seating – Shoe Box Wall with Coat Rail	70





DuraCube bench seating is constructed from DuraSafe 13mm compact laminate making it robust and durable for heavy-duty applications.

The benches are designed to coordinate with lockers and partitioning systems.

A practical, low maintenance and modern design, the bench seating is ideal for various wet areas.

APPLICATIONS

- Schools and universities
- End-of-trip facilities
- Sport and gym change rooms
- Recreational amenities
- Aquatic centres
- Factory change rooms
- Corporate amenities
- Childcare centres

FEATURES & BENEFITS

- DuraSafe 13mm compact laminate construction
- Vandal and impact-resistant surface
- Suitable for wet areas that are hose cleaned
- Low maintenance, easy to clean and sanitise
- Sturdy Oyster Grey powder-coat frames and legs
- Available in island or wall fixed configurations or combined with lockers.
- Coat hooks with rail or shelving is a standard inclusion and installed above bench seating
- A range of compact laminate colours are available
- Most cost-effective when designed in 1200mm and 1800mm lengths

Bench Seating – Island



HOW TO SPECIFY

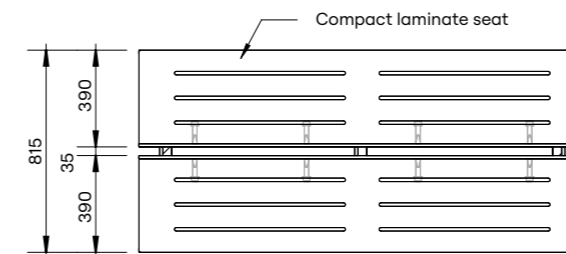
Product
DuraCube bench seating – island (BSI)

Bench Seat Construction Material
DuraSafe 13mm compact laminate

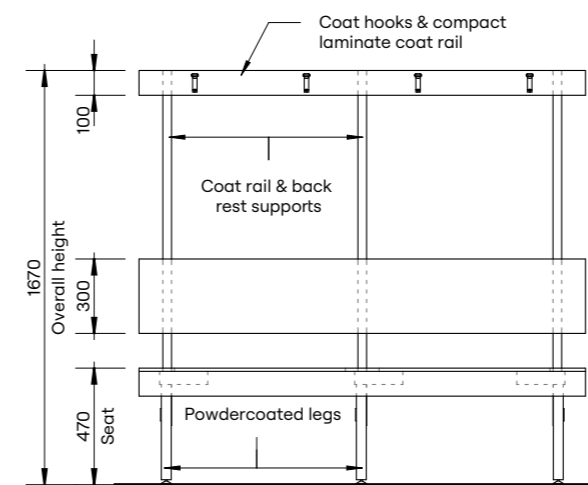
Coat Rail and Back Rest Supports
DuraSafe 13mm compact laminate

Bench Seat Legs
Steel leg – Pearl Grey powder coat

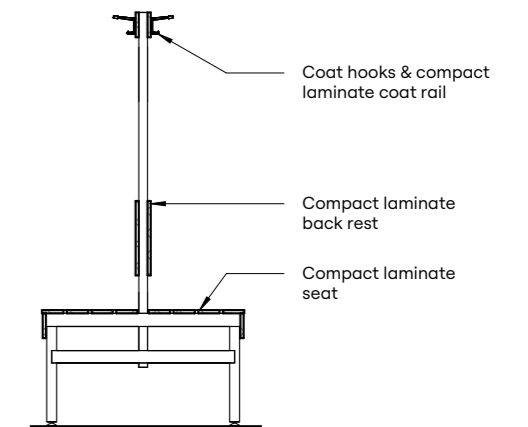
Frame Finish
Steel posts – Pearl Grey powder coat



Plan



Elevation



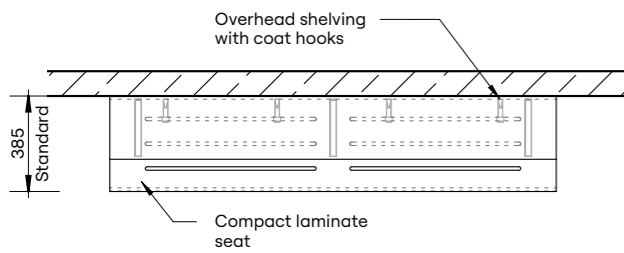
Section



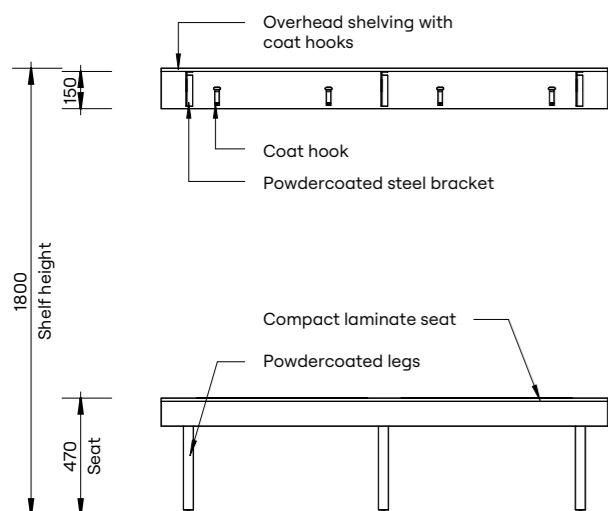
Bench Seating – Wall with Shelving



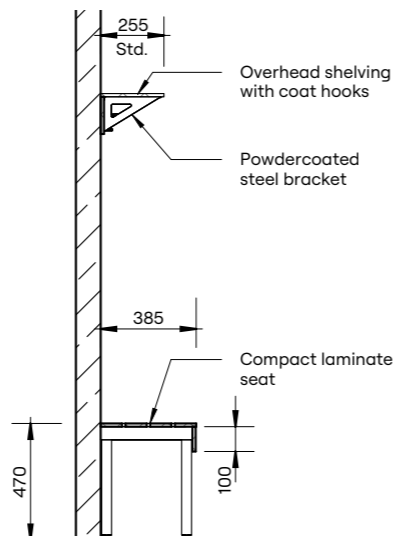
HOW TO SPECIFY	
Product	DuraCube bench seating – wall with shelving (BSW-S)
Bench Seat Construction Material	DuraSafe 13mm compact laminate
Shelving	DuraSafe 13mm compact laminate
Shelf Bracket	Bracket – Oyster Grey powder coat
Bench Seat Legs	Steel leg – Pearl Grey powder coat



Plan



Elevation

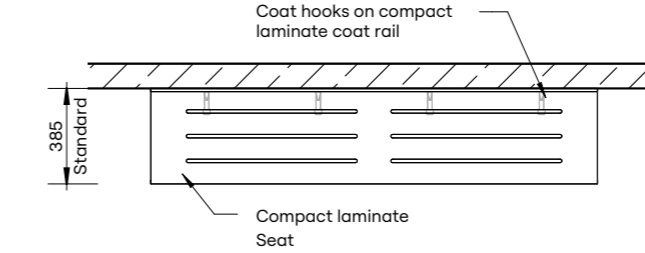


Section

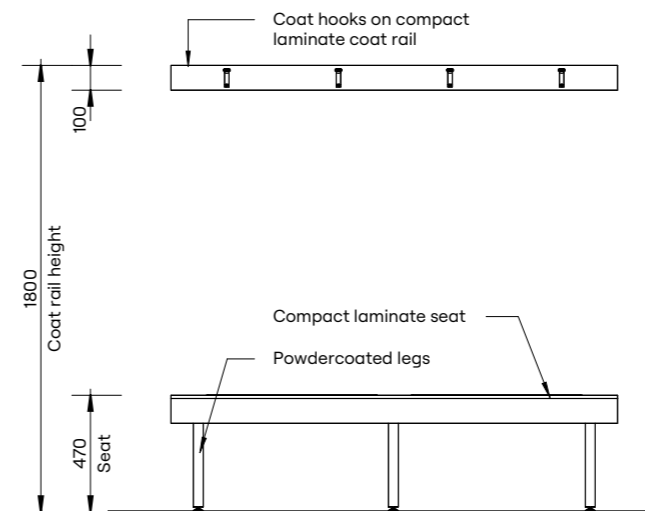
Bench Seating – Wall with Coat Rail



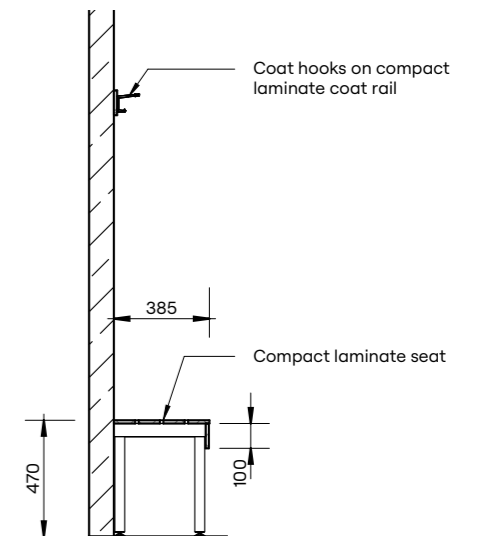
HOW TO SPECIFY	
Product	Bench seating – wall with coat rail (BSW-C)
Bench Seat Construction Material	DuraSafe 13mm compact laminate
Coat Rail	DuraSafe 13mm compact laminate
Bench Seat Legs	Steel leg – Pearl Grey powder coat



Plan



Elevation



Section



Bench Seating – Shoe Box Island

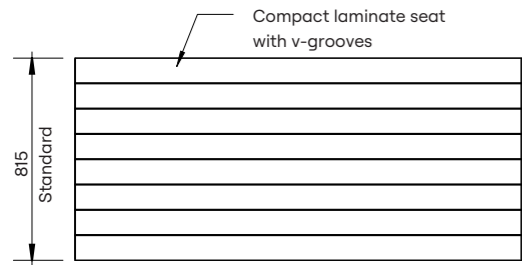


HOW TO SPECIFY

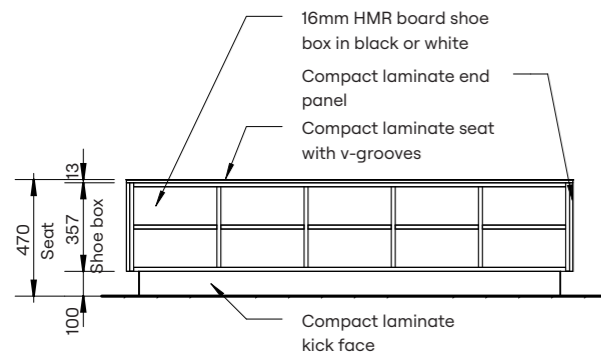
Product
DuraCube bench seating – shoe box island (SBI)

Bench Seat Construction Material
DuraSafe 13mm compact laminate

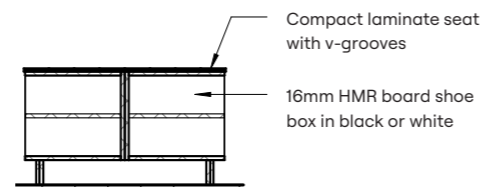
Internal Carcass Construction Material
Select either:
Dry area lockers – white or black 16mm HMR board
Wet area lockers – white 16mm PVC board



Plan



Elevation



Section

Bench Seating – Shoe Box Wall with Shelving

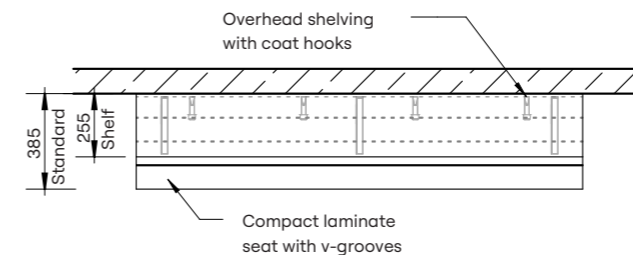


HOW TO SPECIFY

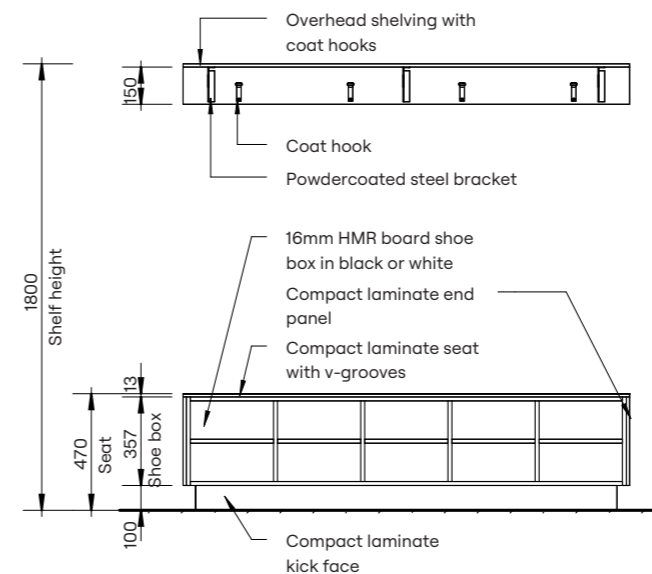
Product
DuraCube bench seating – shoe box island with shelving (SBI-S)

Bench Seat Construction Material
DuraSafe 13mm compact laminate

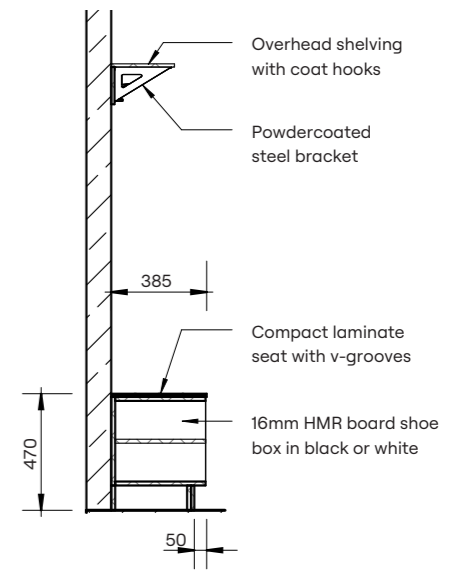
Internal Carcass Construction Material
Select either:
Dry area lockers – white or black 16mm HMR board
Wet area lockers – white 16mm PVC board



Plan



Elevation



Section



Bench Seating – Shoe Box Wall with Coat Rail

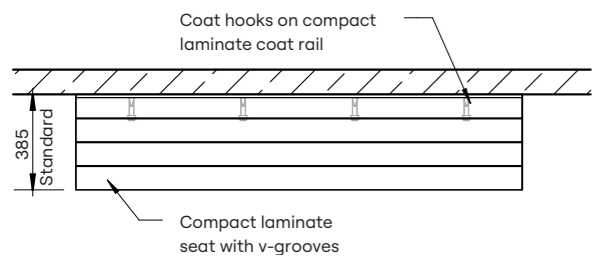


HOW TO SPECIFY

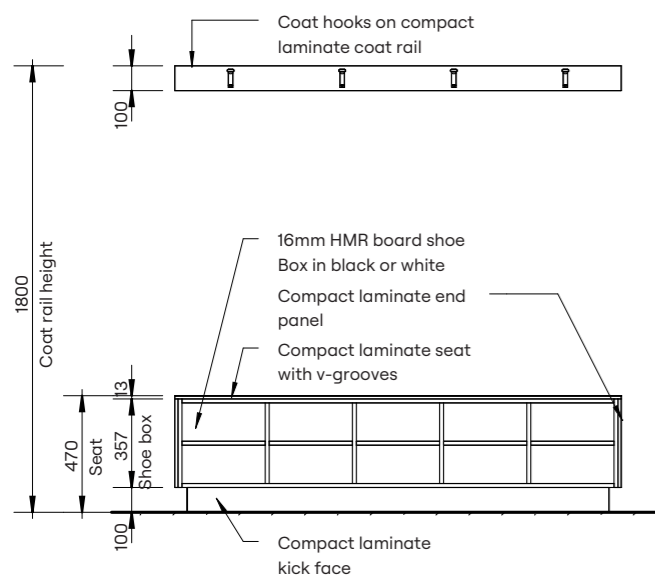
Product
DuraCube bench seating – shoe box wall with coat rail (SBW-C)

Bench Seat Construction Material
DuraSafe 13mm compact laminate

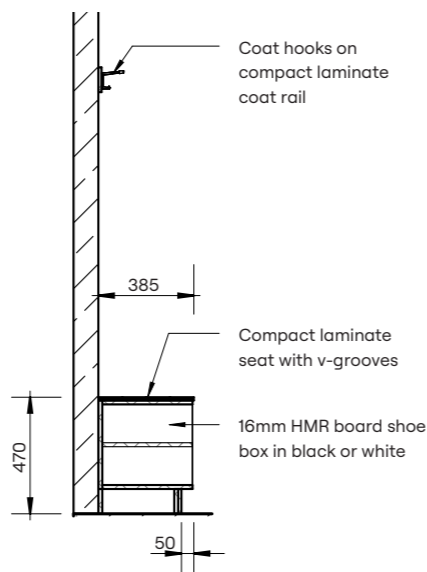
Internal Carcass Construction Material
Select either:
Dry area lockers – white or black 16mm HMR board
Wet area lockers – white 16mm PVC board



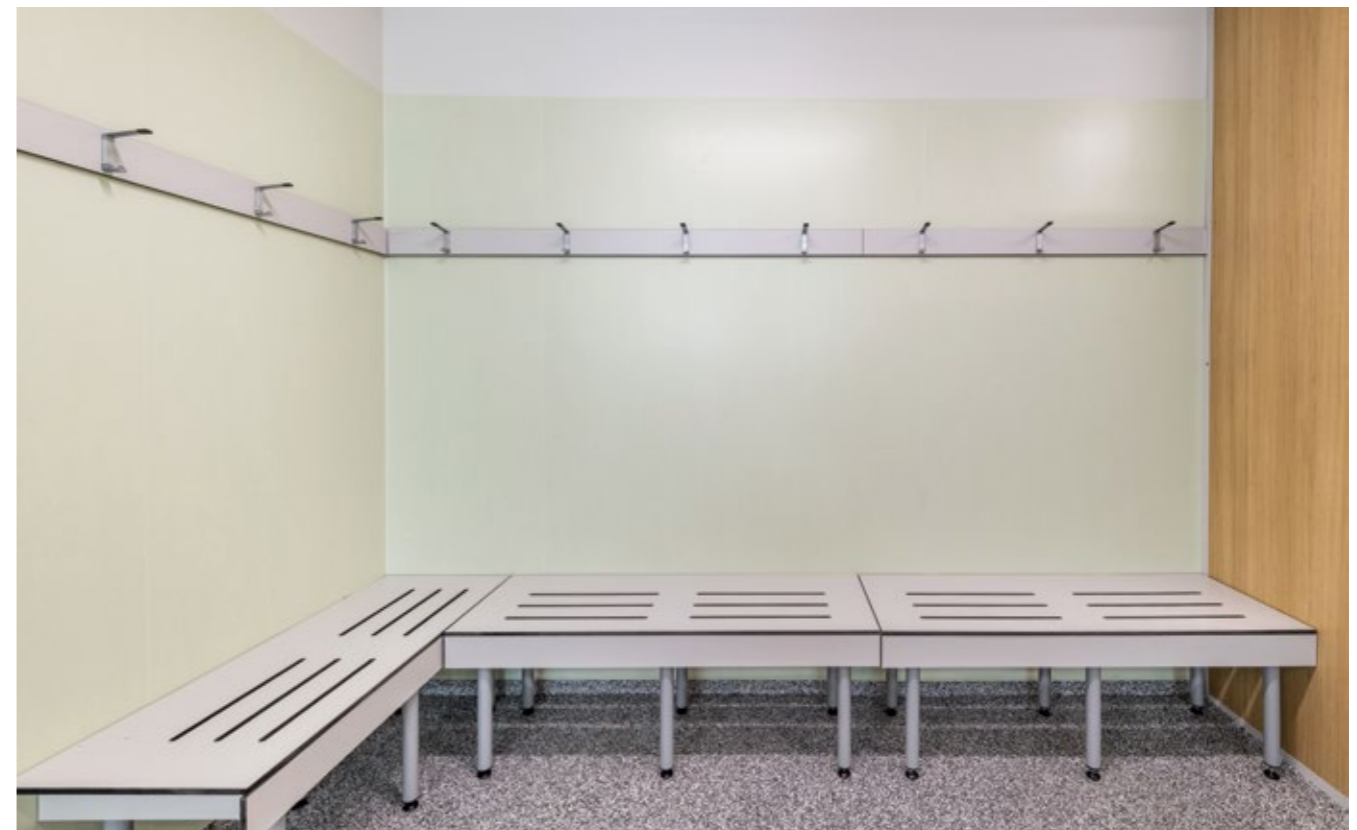
Plan



Elevation



Section



SECTION 5

VANITY BENCHES

Overview	74
Vanity Bench – Inset	76
Vanity Bench – Semi-Recessed	77





DuraCube vanity benches are made to measure and precut ready for quick on-site installation.

A large range of compact laminate colours are available to complement the partitioning system.

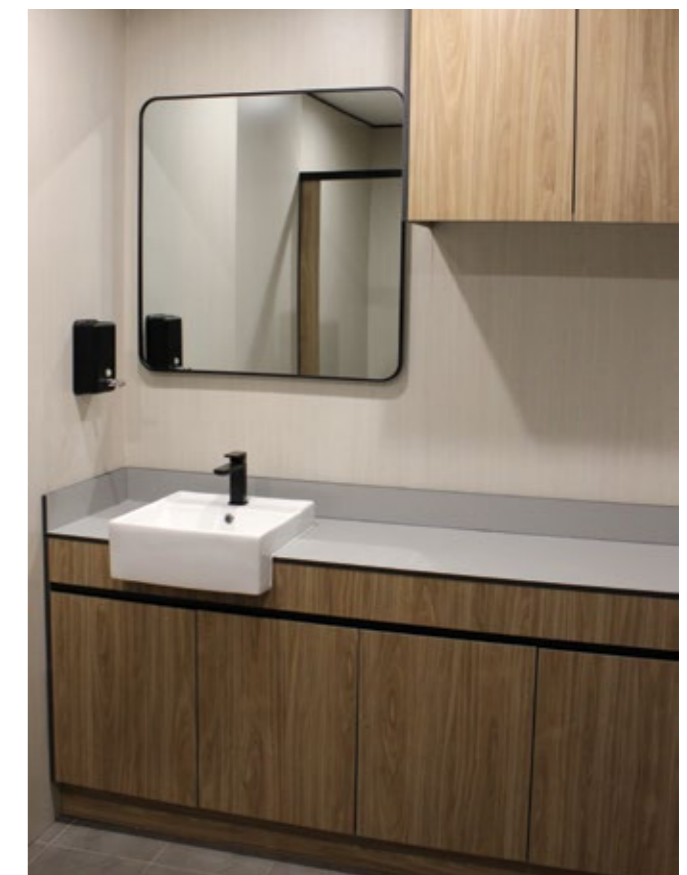
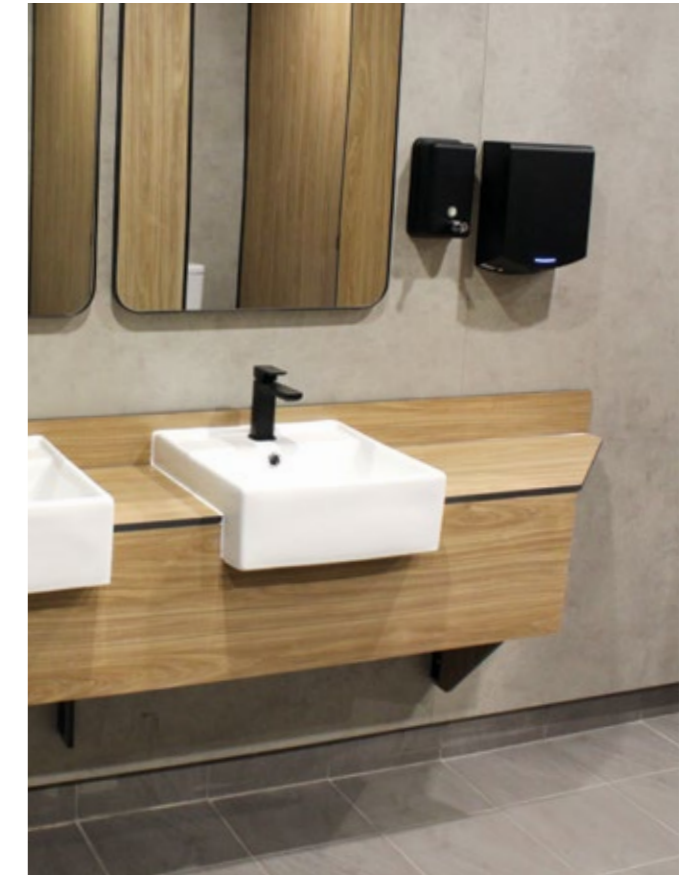
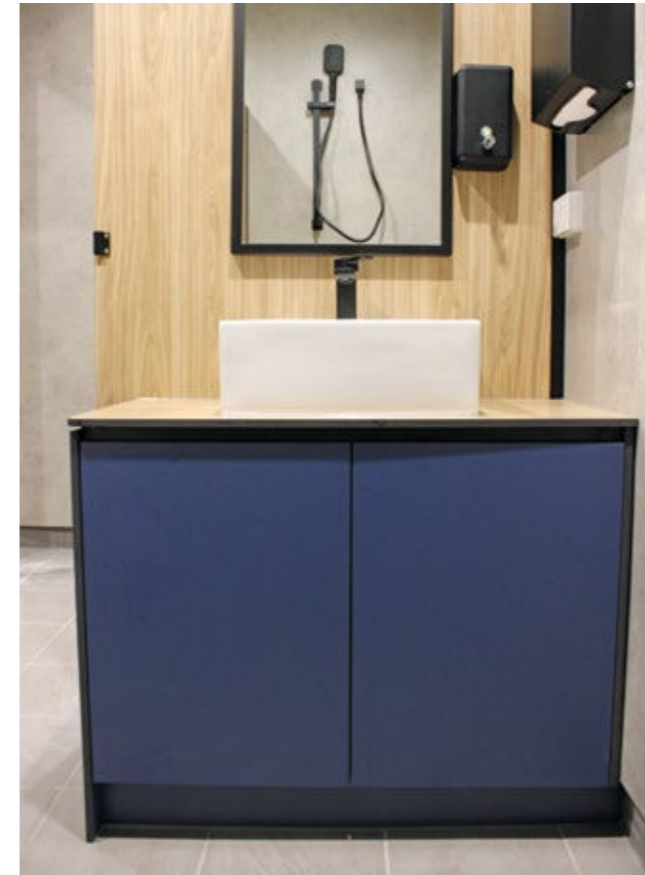
DuraCube compact laminate is antiviral, antifungal and antibacterial. It's the ideal surface for vanity benches in any commercial wet area.

APPLICATIONS

- Schools and universities
- End-of-trip facilities
- Shopping centres
- Sport and gym change rooms
- Defence ablution blocks
- Corporate amenities
- Recreational amenities
- Entertainment centres
- Childcare centres

FEATURES & BENEFITS

- DuraSafe 13mm compact laminate construction
- Basin can be inset or semi-recessed
- Prefabricated vanity with basin cut-out reduces installation time on-site
- Waterproof compact laminate ensures no swelling when in contact with water
- Compact laminate bench will coordinate with partitioning system
- Cost-effective alternative to engineered stone and natural stone benchtop
- A large range of compact laminate colours are available in stock
- Available as a vanity bench or vanity cabinet

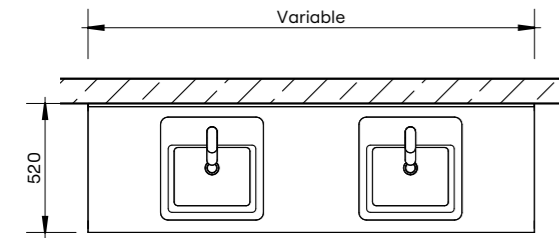




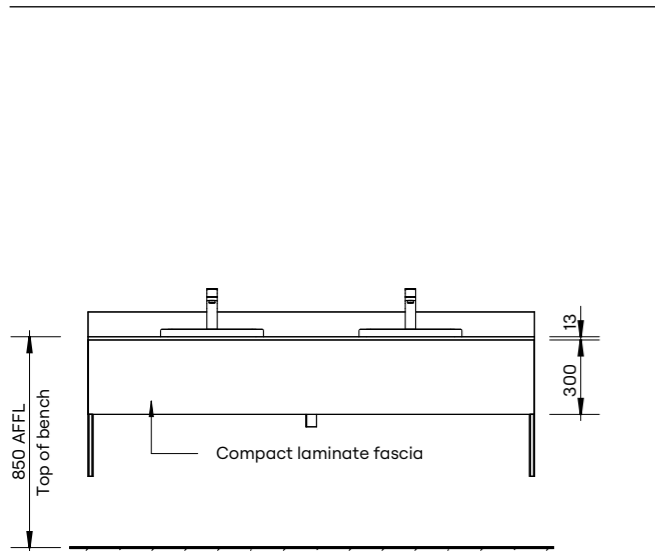
Vanity Bench – Inset



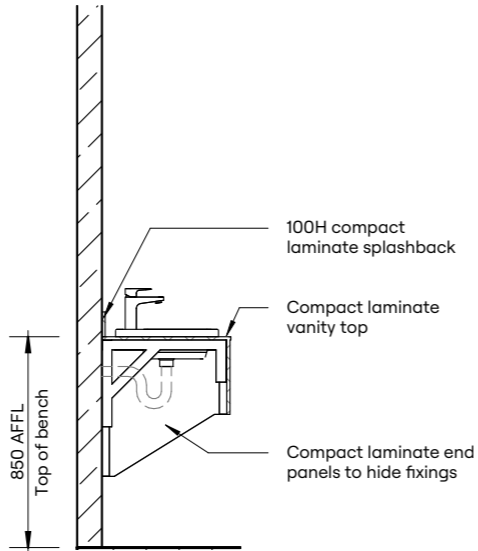
HOW TO SPECIFY	
Product	DuraCube vanity bench – Inset (VB520)
Vanity Bench Construction Material	DuraSafe 13mm compact laminate
Wall Fixing	DuraSafe custom brackets



Plan



Elevation

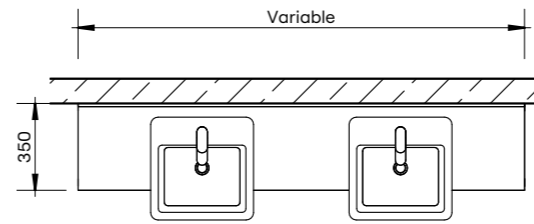


Section

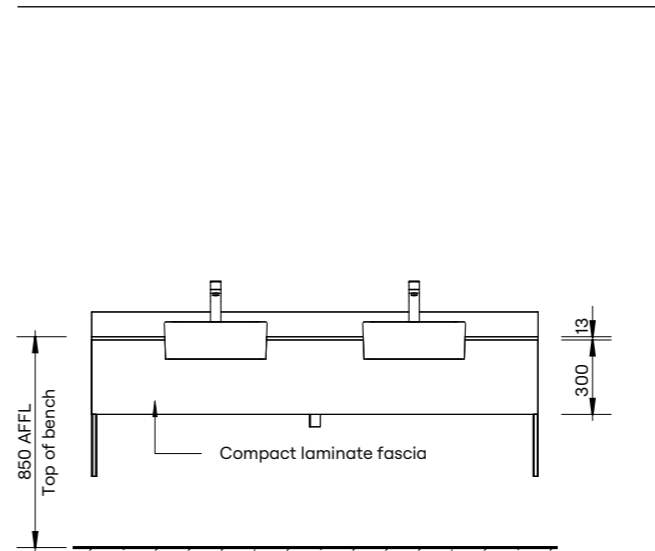
Vanity Bench – Semi-Recessed



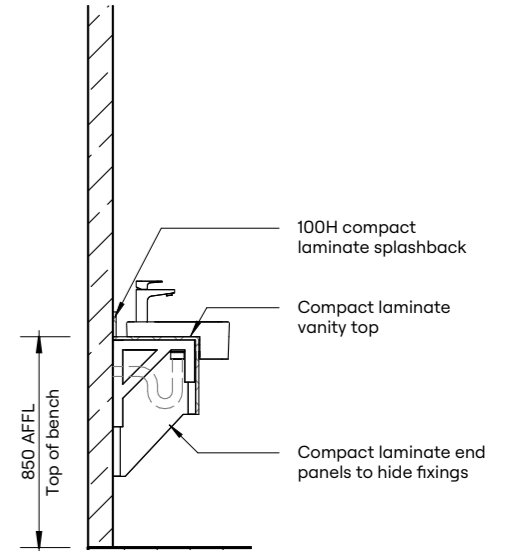
HOW TO SPECIFY	
Product	DuraCube vanity bench – semi-recessed (VB350)
Vanity Bench Construction Material	DuraSafe 13mm compact laminate
Wall Fixing	DuraSafe custom brackets



Plan



Elevation



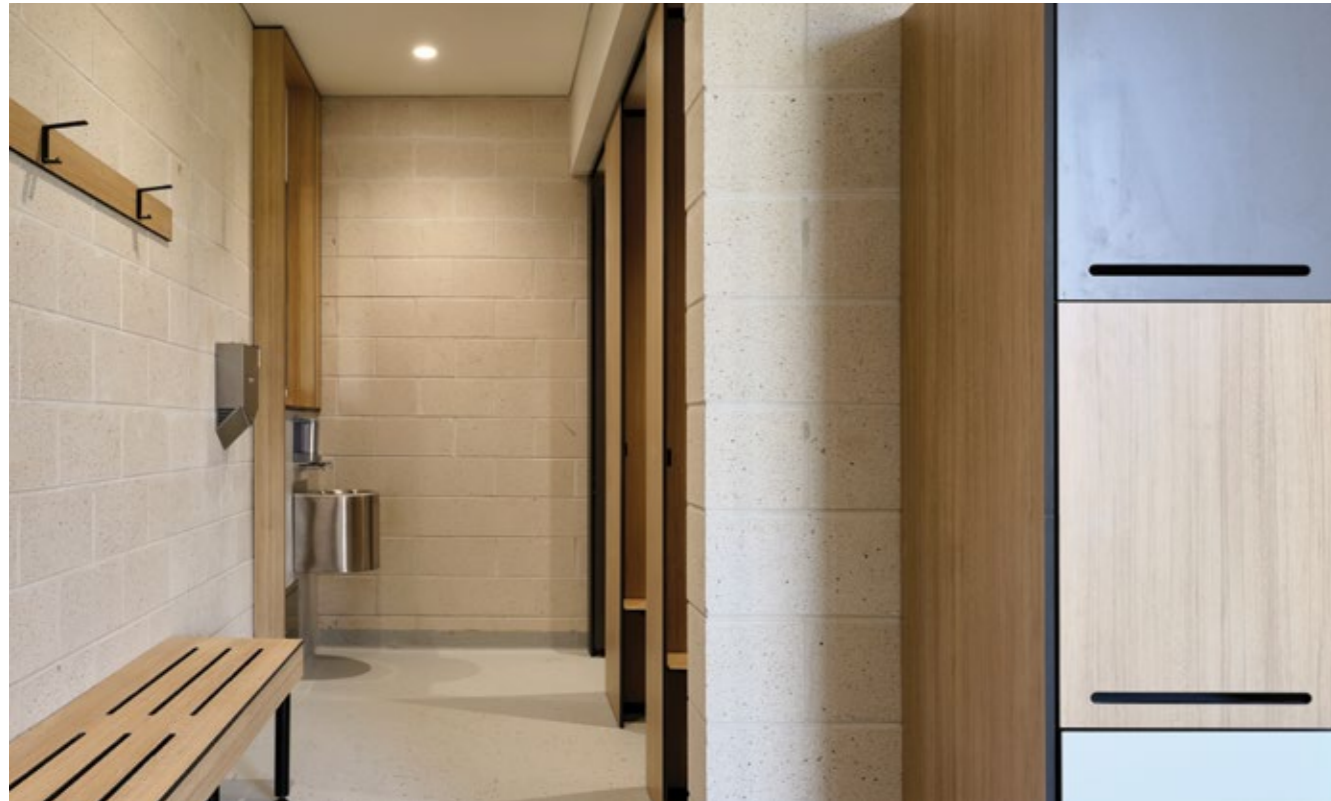
Section

SECTION 6

DURASAFE COMPACT LAMINATE

Overview	80
Colour Range	81
Cut to Size Service	82





DuraSafe Compact Laminate has antiviral, antifungal and antibacterial surface properties ensuring resistance to harmful germs.

DuraSafe has been tested and certified in an Australian laboratory using an internationally recognised ASTM E1053 test method.

This compact laminate is suitable for outdoor, indoor and heavy duty applications.

DuraSafe is competitively priced compared to other compact laminates on the market.

It is graffiti-resistant and has been tested to ASTM D6578/D 6578M-13 (2018).



DuraSafe Compact Laminate
DuraSafe 13mm compact laminate is antiviral, antifungal and antibacterial, eliminating 99% of common germs. Durable, waterproof, easy to clean, impact and scratch resistant.



FEATURES & BENEFITS

- Resistant to harmful germs
- Resistant to abrasion
- Resistant to cigarette burns
- Resistant to water penetration
- Resistant to humidity and high temperatures
- Resistant to harsh cleaning solutions
- Hygienic surface material
- Easy to clean and maintain
- Manufactured adhering to strict safety standards
- All standard colours are stocked in our warehouses and ready for use in your project
- Non-standard colours are not kept in stock and have an additional lead time

“DuraCube’s commitment to sustainability meets today’s needs without compromising future generations.”

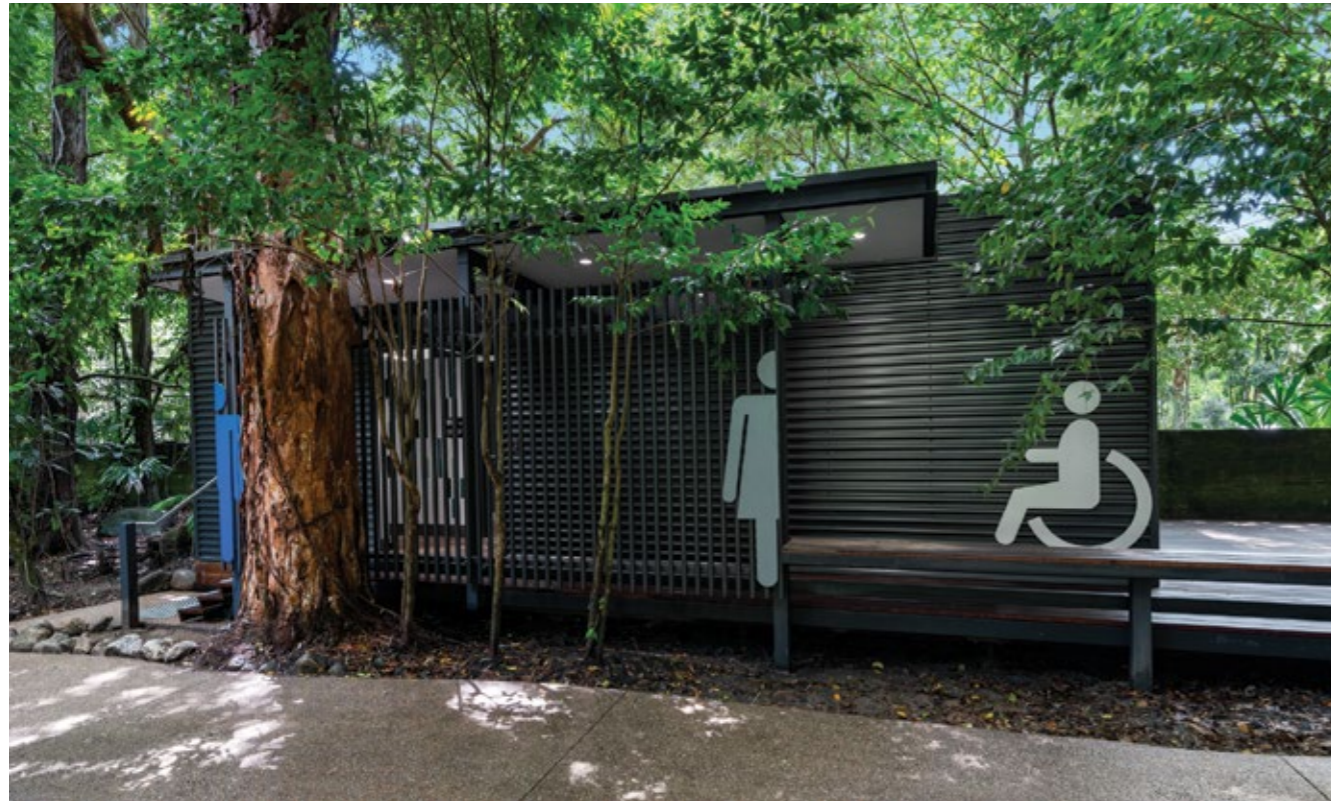
Athol Simpson
Operations Manager, DuraCube

Colour Range

111 Arctic White	113 Off White	275 Classic Grey	268 Evening	279 Charcoal
207 Wattle	138 Red Ochre	467 Jade Mist	243 Sage Green	245 Gum Leaf
464 Barrier Reef	284 Sky	291 Royal Blue	297 Deep Water	401 Midnight
5388 Alpine Ash	5577 Concrete	923 Brushed Grey	5730 Brushed Graphite	5578 Slate
9610 Pure Ash	738 Oak	5394 Washed Acacia	5003 Philippine Teak	5333 Southern Pine
5353 Rosenheim Elm	5331 Midnight Acacia	5389 Deep Woods	5375 Native Walnut	5427 Refresh Oak

Please Note: The colours in this brochure have been recreated as accurately as possible to match the DuraSafe Compact Laminate colours. The colour chart should be used as a guide only. Physical samples of compact laminate colours are available upon request.

Contact laminate is durable, waterproof, easy to clean and scratch resistant.



DuraSafe Cut to Size Service is the ideal solution for custom designed furniture and joinery including tables, desks, benchtops, doors and wall panels.

Compact Laminate is extremely durable, waterproof and easy to clean.

The surface is antiviral, antifungal and antibacterial, eliminating 99% of common microorganisms.

DuraCube has four CNC machines dedicated to cutting compact laminate. We can cut compact laminate to any shape and size within the 3600mm x 1800mm sheet size.

Standard edge profiles are 1.5mm aris top and bottom. Sharknose and square edge profiles are also available.

DuraCube can help save assembly time by pre-drilling holes, routing cut-outs and creating v-grooves at a minimal cost.

“Let your imagination run free with this totally custom offer.”

Alicia Woodbury
Sales Support, DuraCube

APPLICATIONS

- Cafés, restaurants, bars, alfresco dining
- Childcare centres
- Schools and universities
- Shopping centres
- Corporate breakout areas and lunch rooms
- Health facilities

FEATURES & BENEFITS

- DuraSafe 13mm compact laminate construction
- Customised designs to suit your space and style
- Cost-effective dining solution for indoor and outdoor applications
- Black core is polished to enhance the edges and eliminates the need for edge-tapes that peel
- Impact, vandal and graffiti-resistant material
- Waterproof material that does not swell when wet
- Easy to clean and maintain
- Antiviral, antifungal and antibacterial surface prevents germ growth
- Large range of colours are available



SECTION 7

ACCESSORIES / HARDWARE

Accessories	86
Hardware	87





Our accessories and hardware add the finishing touch to any project.

Accessories

Ambulant Signs



MLS16446 — BLU



MLS16266 — SIL



MLS16266 — BLU



MLS16266 — SIL



MLS16246 — BLU



MLS16446 — SIL

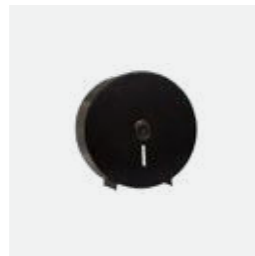
Toilet Roll Holders



Dispenser ML841-SS



Dispenser ML832-SS



Dispenser ML841-BL



Holder 513TRH-ALUM

Grab Rails



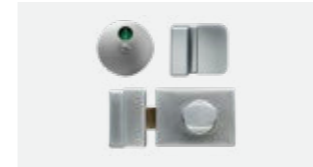
Ambulant Grab Rail MLR112-SS



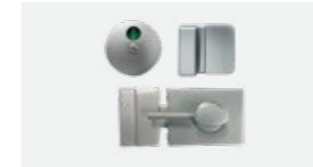
Ambulant Grab Rail MLR112-BL

Hardware

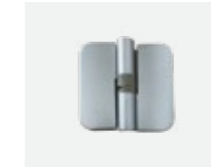
Viva Satin Chrome (Standard Hardware)



Standard Lock, Indicator and Bumper



Ambulant Lock, Indicator and Bumper



Gravity Hinge (x3 per door)

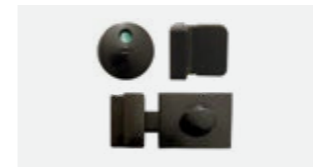


Ambulant D Handle

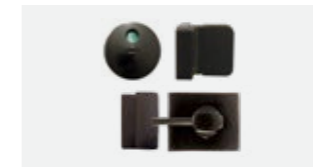


Coat Hook with Door Stop

Viva Black (Optional Hardware)



Standard Lock, Indicator and Bumper



Ambulant Lock, Indicator and Bumper



Gravity Hinge (x3 per door)

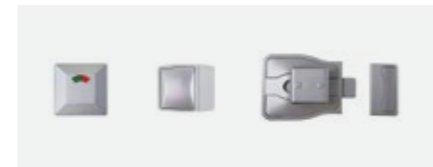


Ambulant D Handle



Coat Hook with Door Stop

Zetlan Satin Chrome (Optional Hardware)



Standard Lock, Indicator and Bumper



Gravity Hinge (x3 per door)



Ambulant D Handle



Coat Hook with Door Stop

Zetlan Black (Optional Hardware)



Standard Lock, Indicator and Bumper



Gravity Hinge (x3 per door)



Ambulant D Handle



Coat Hook with Door Stop

Bolt Through Cover Plates



Pedestal Legs



Aluminium Extrusion Colours



Oyster Grey Matt
Interpon No: GL258A



Black Satin
Interpon No: GN150A

Contact

Sydney (Head Office)

13 Pullman Place
Emu Plains NSW 2750

—

Melbourne

12 Metrolink Crescent
Campbellfield VIC 3061

By appointment only

—

Brisbane

Unit 3B, 400 Nudgee Road
Hendra QLD 4011

By appointment only

—

Adelaide

8 Selgar Avenue
Clovelly Park SA 5042

By appointment only

—

Telephone: 1300 387 228

Email: sales@duracube.com.au

Thank you

Please contact our team
with any questions about
your bathroom joinery.



Bathroom Joinery Systems
DuraCube.com.au



