

SPORTS & RECREATION

Built for Sports. Built for Communities. Built to Last.

WHAT DOES A SPORTS & RECREATION PROJECT DEMAND?

Sporting and recreation environments are among the most demanding spaces to design and build. They must perform flawlessly under relentless use while offering a safe, welcoming experience for diverse communities. From aquatic centres and gyms to stadiums and school facilities, these spaces are where durability, hygiene, and design excellence converge.

**DURABILITY
&
FUNCTIONALITY**

Spaces must perform under pressure. Materials should resist heavy traffic, impact, and moisture, while layouts and fit-outs—lockers, seating, and change-rooms—must be practical, user-friendly, and built for everyday use.

**HYGIENE
&
SAFETY**

High-traffic, high-moisture environments demand non-porous, water-resistant, and easy-to-clean surfaces. These prevent bacteria, mould, and cross-contamination, keeping users safe and facilities healthy.

**INCLUSIVITY
&
INSPIRATION**

A great facility inspires. Thoughtful finishes, colours, and layouts create motivating environments that reflect local identity, support gender equity, and ensure universal access—making every user feel welcome.

**SUSTAINABILITY
&
LONGEVITY**

Solutions must stand the test of time. Products with extended lifecycles reduce maintenance, minimise waste, and align with environmental goals—ensuring communities benefit for years to come.



SHAPING SPACES THAT ENDURE



DuraCube

In the Sport & Recreation sector, durability and hygiene are non-negotiable. From community sporting clubs and gyms to aquatic centres, elite training facilities, and school sports complexes, DuraCube systems are engineered to perform under pressure, and to keep performing year after year.

Every system is manufactured and tested to withstand high traffic, constant moisture, and rough daily use. To give our clients complete peace of mind, we back this performance with a 15-year warranty — covering not only our products but also the installation.

This means architects, builders, and facility managers can confidently specify DuraCube, knowing they are delivering a solution that is reliable, long-lasting, and backed by a commitment to quality at every stage.



FIRST FOR

SUSTAINABILITY

15 YEAR WARRANTY

PARTNERSHIP

DURABILITY

PRECISION MANUFACTURING

DURACUBE SOLUTIONS FOR SPORT & RECREATION

DuraCube offers a complete range of systems designed to meet the unique demands of Sport & Recreation facilities. Each product is engineered for durability, hygiene, and user comfort, while maintaining a modern, engaging design.



LOCKER SYSTEMS

Secure, moisture-resistant, and fully customisable, our lockers are designed to suit gyms, aquatic centres, schools, and more. Options include ventilation slots for airflow, integrated seating or ironing stations for efficiency, and tailored dimensions to fit any layout.



PARTITIONS

Built for high-moisture environments, our toilet and shower partitions combine privacy, durability, and hygiene. Manufactured from compact laminate, they resist water, impact, and wear while maintaining a modern, streamlined look.



BENCH SEATING

Strong, versatile, and practical, our bench seating is designed to support both team and individual use. Available in island, wall-mounted with shelving, or wall-mounted with coat rail configurations, they deliver comfort and durability.

DURACUBE SOLUTIONS FOR SPORT & RECREATION

DuraCube offers a complete range of systems designed to meet the unique demands of Sport & Recreation facilities. Each product is engineered for durability, hygiene, and user comfort, while maintaining a modern, engaging design.



PRIVACY PANELS

Flexible and discreet, our privacy panels create defined spaces within change rooms, showers, and washrooms. Compact laminate construction ensures water resistance, durability, and easy maintenance, with customisable sizes and finishes



VANITIES

Available as sleek vanity benches or cabinets, our vanities are pre-cut for precise installation. Manufactured from compact laminate, they offer water resistance, easy cleaning, and a seamless professional finish with minimal on-site labour.



CUT TO SIZE

DuraCube compact laminate cut-to-size service offers stylish, durable, and antibacterial + antiviral surfaces for dining, working, or learning. We cut from 3600 x 1800 sheets to create tabletops, benchtops, door panels, wall panels, and other custom joinery to any required size.

INSIGHTS FROM OUR JOURNAL

Optimising Locker Room Hygiene & Culture

Well-designed, hygienic, and functional sporting facilities go beyond practicality—they directly influence culture and performance.

- Water-resistant, easy-to-clean surfaces reduce the risk of mould and bacteria, protecting health.
- Impact and graffiti resistance ensure facilities remain visually appealing and low-maintenance.
- Thoughtfully designed bathroom/changerooms contribute to better morale, inclusivity, and team culture.

Source: DuraCube Journal – Optimising Locker Room Hygiene & Culture





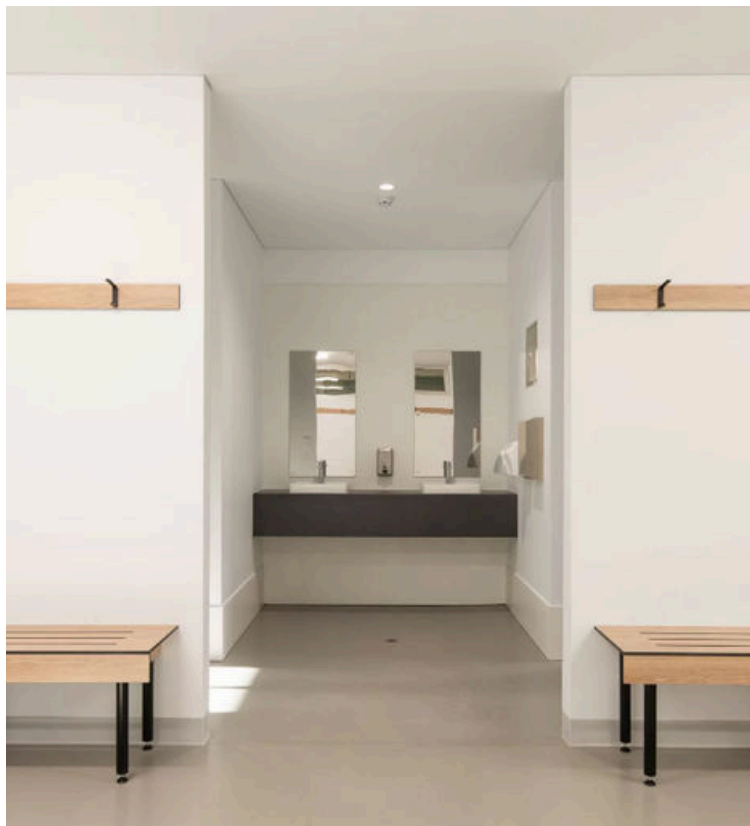
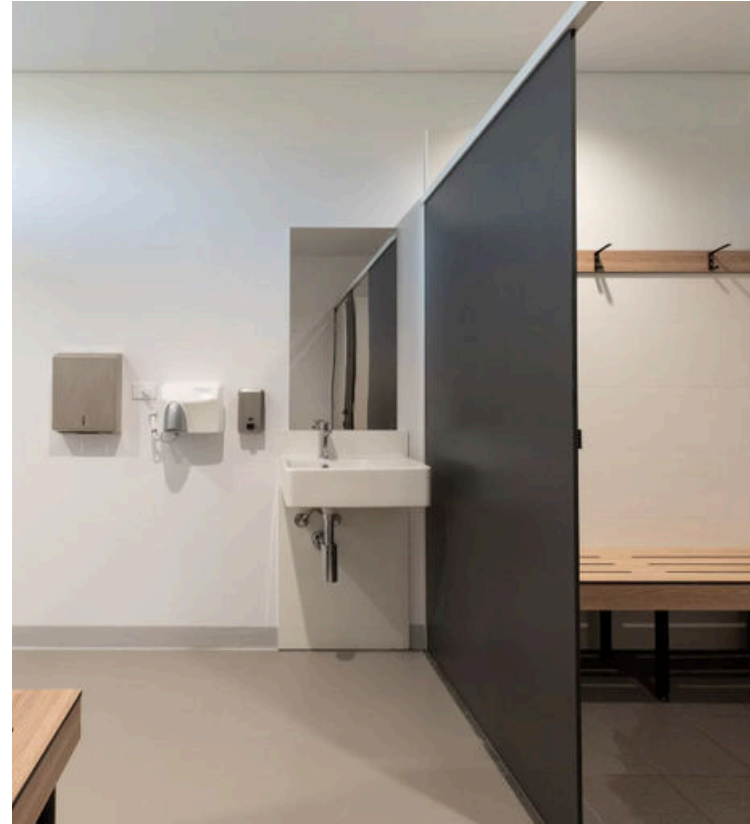
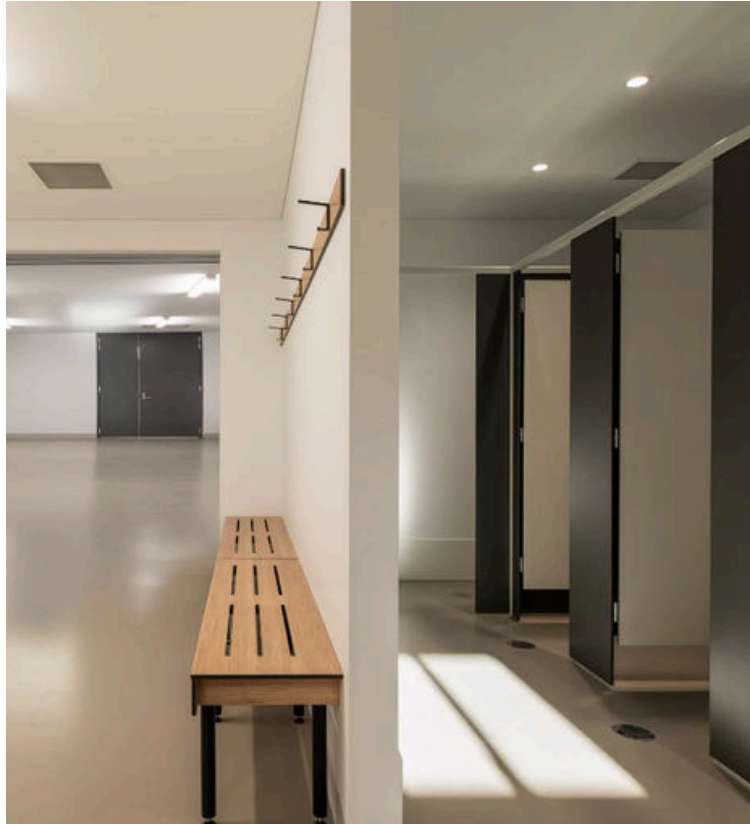
CASE STUDIES



DIGGERS REST FOOTBALL NETBALL CLUB

In 2024, Diggers Rest unveiled The Shelter—a 550m² pavilion designed by K20 Architecture to deliver accessible, gender-equitable, and sustainable sporting facilities. Alongside a realigned oval and upgraded netball and tennis courts, the project provides a modern space rooted in local identity.

DuraCube Compact Laminate Systems were installed in the bathrooms and changerooms to ensure durability, inclusivity, and easy upkeep. Designed for high-use wet areas, these solutions align seamlessly with the project’s sustainability and accessibility goals, future-proofing the precinct for years to come.



PEDLAR RESERVE REDEVELOPMENT

The Pedlar Reserve upgrade has transformed a much-loved community ground in Seaton into a modern, multi-sport and event hub. Featuring a large communal space, function room, viewing platform, and expanded kitchen facilities, the redevelopment now caters to football, cricket, soccer, and community events.

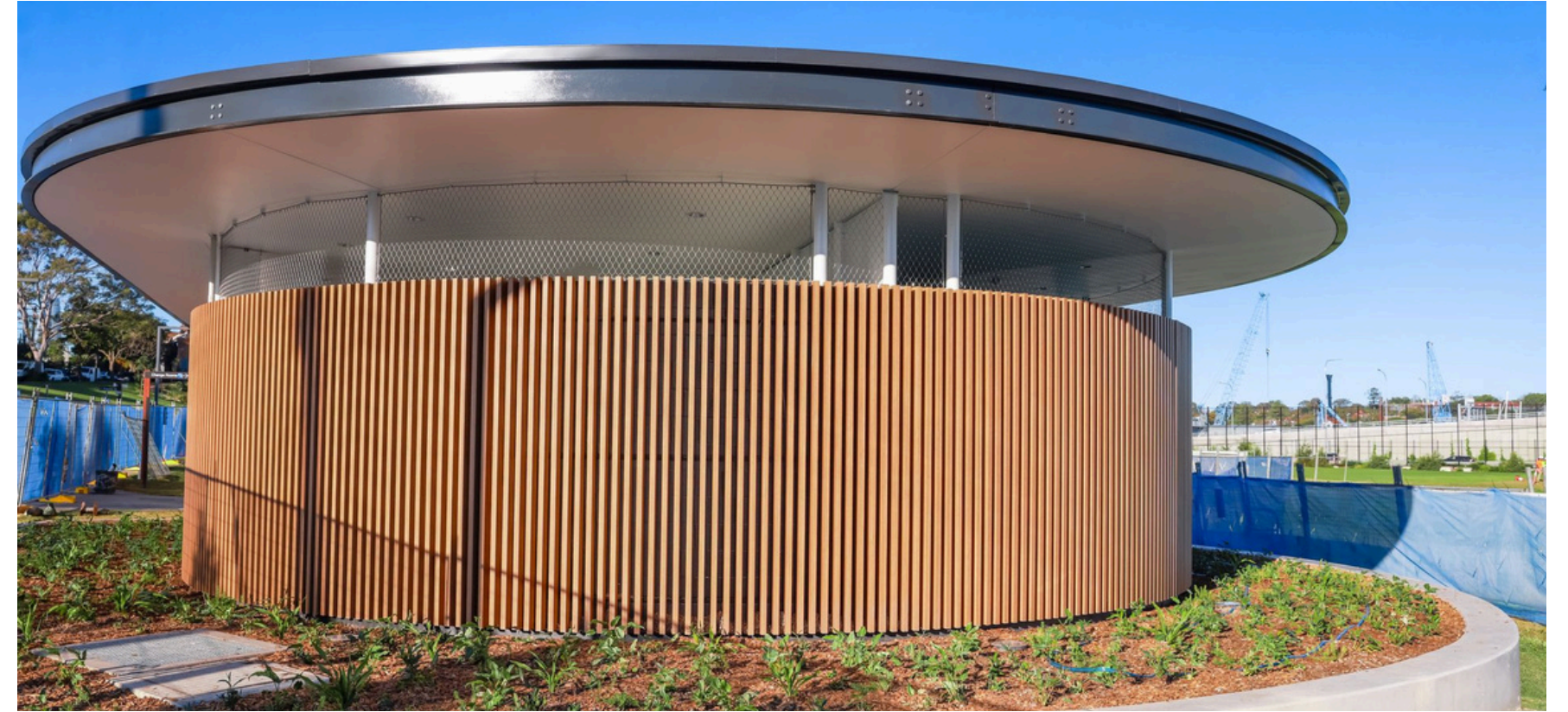
To handle the demands of a high-traffic venue, DuraCube provided resilient bathroom joinery systems that combine strength, privacy, and easy maintenance. The result is a welcoming, practical facility that supports both sporting performance and social connection for the community.



FORSTER SURF LIFE SAVING CLUB

First established in 1925, the Forster Surf Life Saving Club has long been a pillar of safety and community pride on the NSW coast. Its 2024 redevelopment delivers a modern, inclusive clubhouse that honours this history while supporting future generations of lifesavers and the wider community.

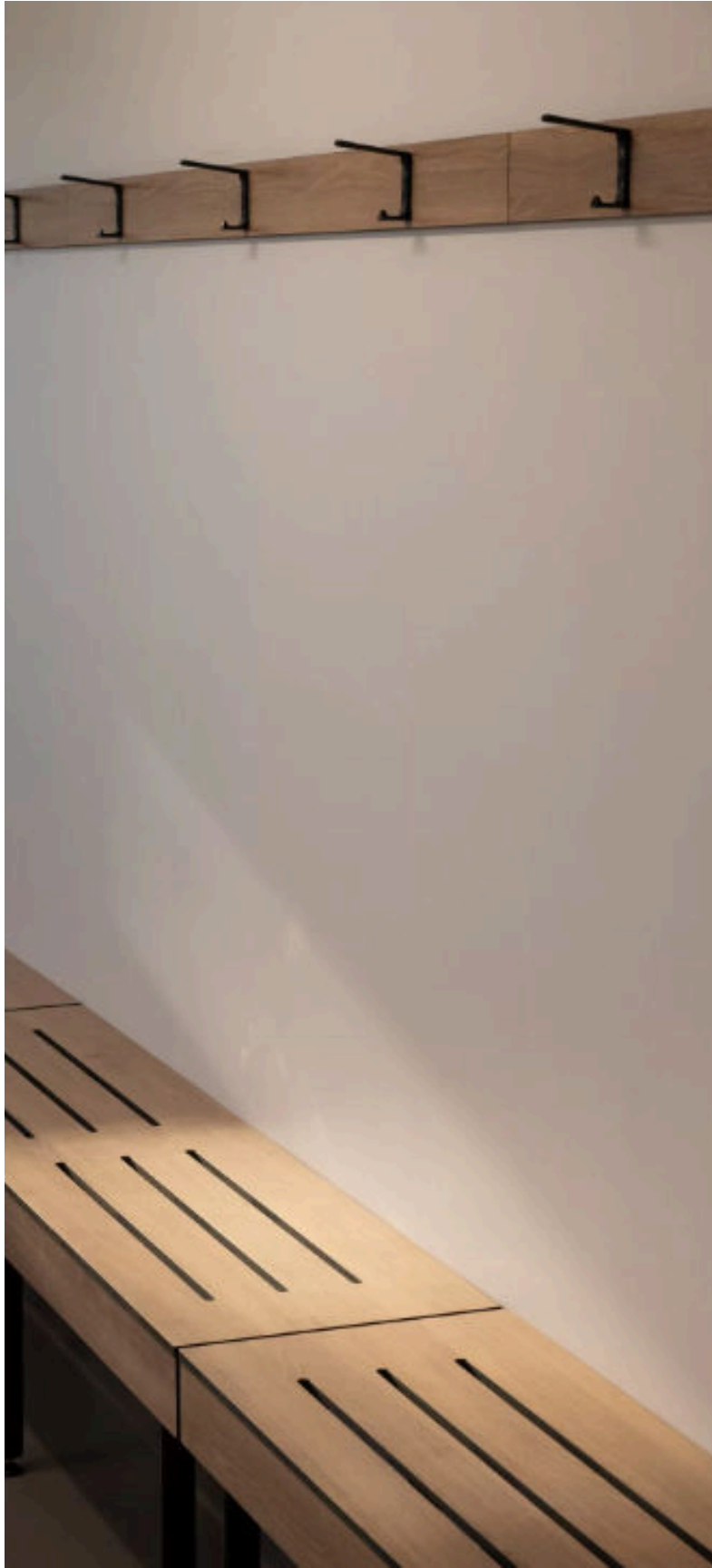
Webber Architects specified DuraCube Bathroom Joinery Systems for the changerooms and amenities, chosen for their durability, ease of maintenance, and fit-for-purpose design. With robust partitions, showers, and seating, the new facilities are built to withstand surf club conditions—ensuring a safe, functional, and welcoming space for all.



ROZELLE PARKLANDS FACILITIES ENHANCEMENT

Opened in 2024, Rozelle Parklands has transformed the former Rozelle Railyards into one of Sydney's most significant new green spaces. Covering almost 10 hectares and featuring more than 14 kilometres of walking and cycling paths, the parklands are a major milestone in the city's ongoing urban renewal.

Designed by Hassell and delivered by Reld Group in collaboration with Ford Civil, the project reflects Transport for NSW's vision for accessible, inclusive public spaces. Balancing design excellence with community outcomes, Rozelle Parklands provides a vibrant, connected, and enduring asset for the people of Sydney.



FIRST FOR SPECIFIERS

REGISTER NOW FOR EXCLUSIVE ACCESS TO OUR SPECIFIER PORTAL

Gain the tools, resources, and inspiration you need:

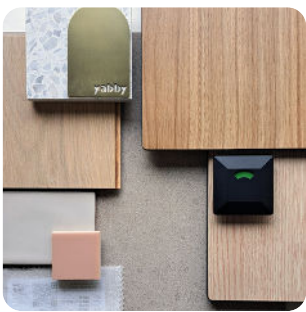
- Architect Training (CPD Presentations): Tailored sessions to expand knowledge, support compliance, and spark design innovation.
 - Design Tools
 - Styles & Inspiration
 - Revit Families – Design with Revit
 - ArchiCAD Objects – Design with ArchiCAD
-
- Exclusive for Specifiers: Access our premium compact laminate finishes, curated for standout projects.
 - Explore More
 - Downloads
 - Full Product Range



Design Resources



Certification



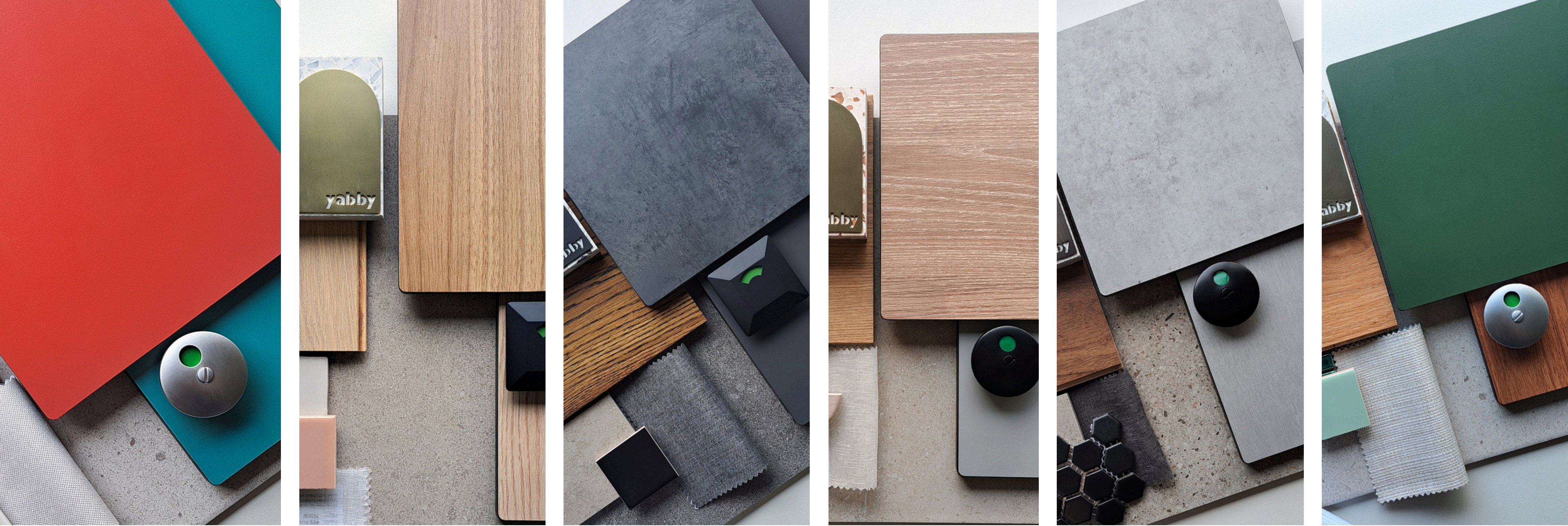
Samples



Supportive Team



Scan to Register



DuraCube

duracube.com.au