



By integrating the wash basin within the private cubicle, we eliminate the design gaps found in communal washing areas, such as lack of privacy and bullying “hot spots”.

This “all-in-one” approach is functionally superior and easier to maintain. It meets the growing demand for trauma-informed and gender-inclusive design in Australian schools and universities.

Add a cleaners closet where ongoing efficiency and maintenance are a primary interest.

REGULATORY COMPLIANCE

- NCC 2022 Part F — Deem to Satisfy Provisions
- F4D81a — Unisex facility requirement for full height doors and partitions.
- F4D82c — Door removable from outside if less than 1.2m between pan and doorway.
- To comply with NCC J6D5, 25 l/s of forced exhaust air ventilation per cubicle is required. Pressure drop through the cubicle is less than 12pa at 25 l/s.

APPLICATIONS

- Schools and universities
- End-of-trip facilities

- Shopping centres
- Sport and gym change rooms
- Defence ablution blocks
- Corporate amenities
- Recreational amenities

FEATURES & BENEFITS

- Vanity Basin cabinet to conceal waste and electronic tapware controls (if applicable) to prevent vandalism
- Access panel, vanity cabinet, mirror cabinet and cleaners cabinet all locked and keyed alike
- Optional mirror cabinet concealing stainless steel paper towel dispenser and electronic touch-free soap dispenser with 2L storage
- Optional high speed energy efficient hand dryer in place of paper towel dispenser
- Vertical services duct with permanent access for services through locked hatch
- Prefabricated with cutouts for plumbing and electrical services
- Space saving without the need to cavity walls between cubicles for services
- Nibs and divisional panels are mounted to the floor and fixed to the ceiling to maximise privacy



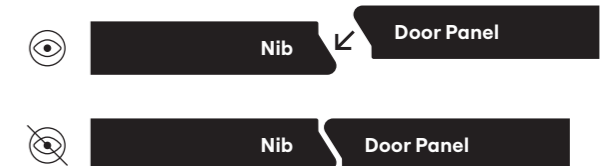
- DuraCube privacy edge is a standard inclusion
- No sight gaps around panels, nibs and doors
- DuraSafe 13mm compact laminate construction
- No edge strip required as compact laminate black core is visible on the edges

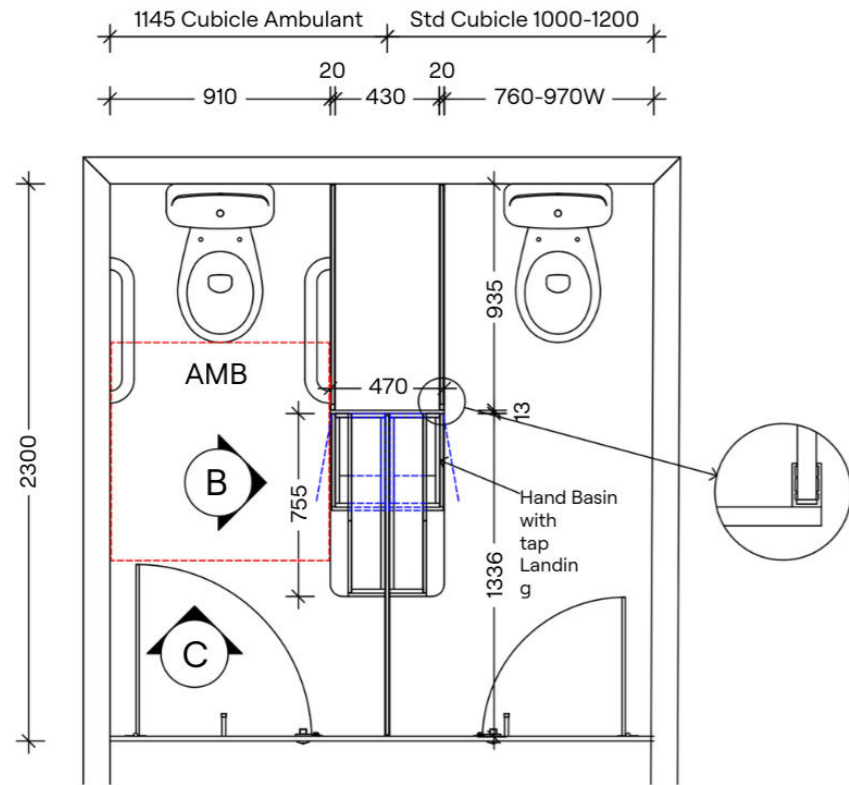
- Impact-resistant construction
- Vandal-resistant surface
- Waterproof, suitable for hose cleaning
- Overall system height 2100 to 3000mm AFFL

“By integrating the basin directly into the partitioning system, we’ve eliminated any compromise between privacy and convenience. It’s a seamless, all-in-one solution designed for the modern user experience.”

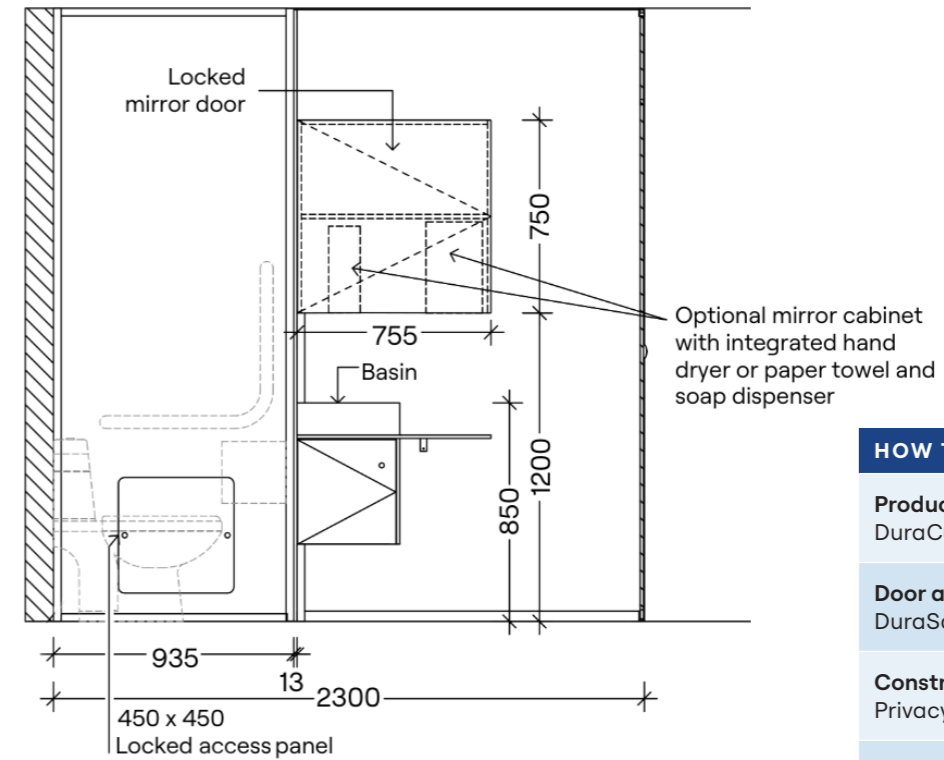
Nick Serafin
Marketing Manager, DuraCube

Privacy edge is a standard inclusion with privacy ultra, eliminating all sight gaps between doors and nibs





Plan



Elevation B

HOW TO SPECIFY

Product
DuraCube full height self-contained (FHSC)

Door and Panel Construction Material
DuraSafe 13mm compact laminate

Construction
Privacy edge angled door and nib

Hardware
Viva satin chrome hardware is standard
Other hardware is available – see pages 104-105

Locks
All locks to be keyed alike for access panel, vanity cabinet, mirror door cabinet, and cleaners cabinet.

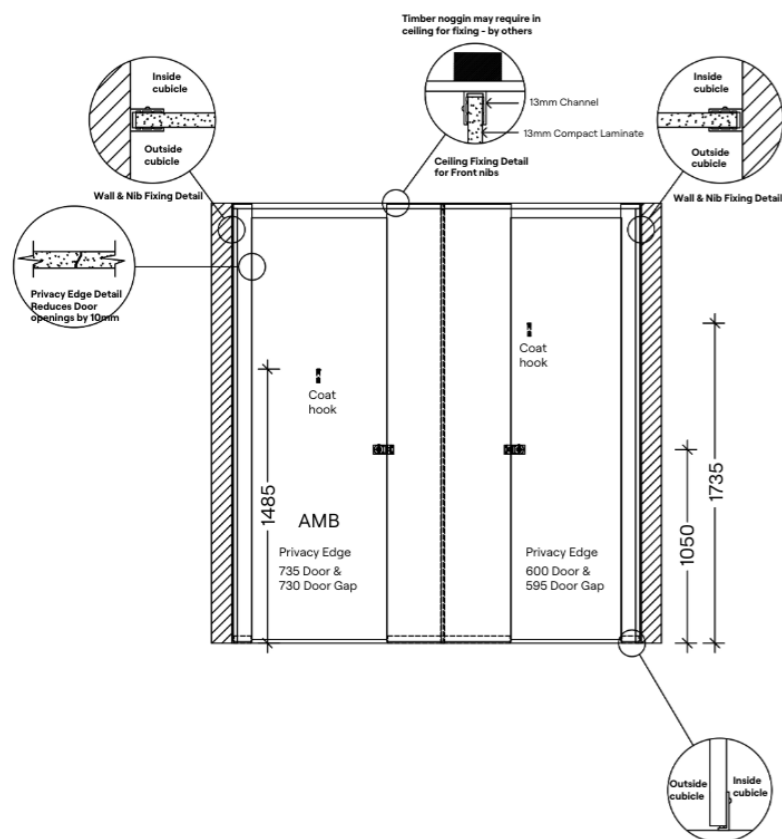
Fixtures (select one)
Standard
No mirror cabinet, dispensers, or cleaners cabinet.

Upgrade Options
Locked mirror cabinet with concealed electronic soap dispenser and paper towel.
Locked mirror cabinet with concealed electronic soap dispenser and high speed hand dryer.
Locked cleaners storage cabinet.

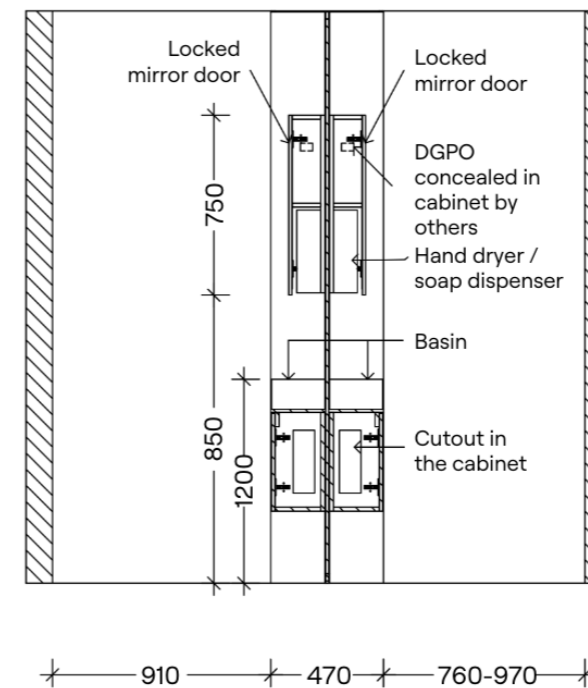
Ceiling Fixing
Aluminium channel
Colour – Select from options on page 105

Floor Mounting
Aluminium angle
Colour – Select from options on page 105

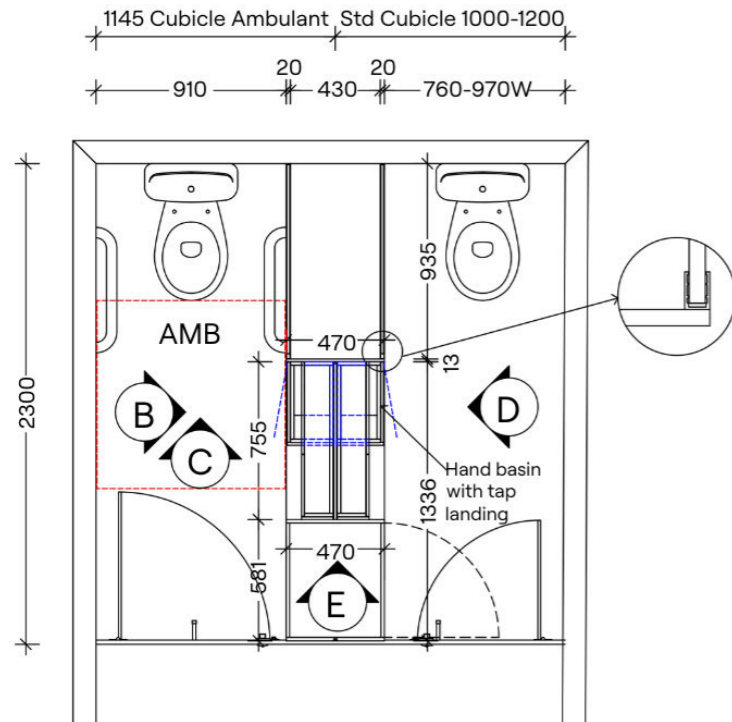
Overall System Height
Min. 2100mm to Max. 3000mm AFFL



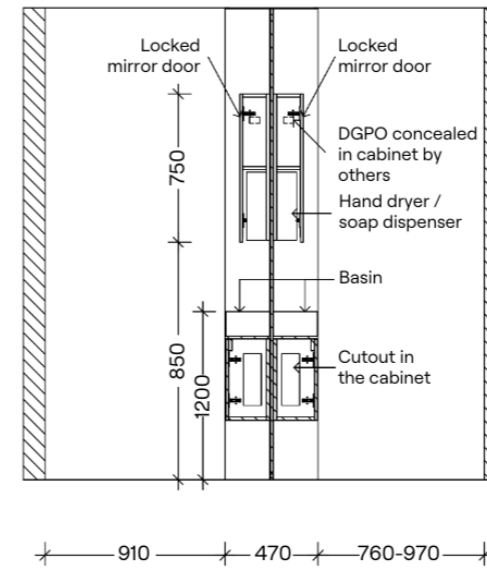
Elevation A



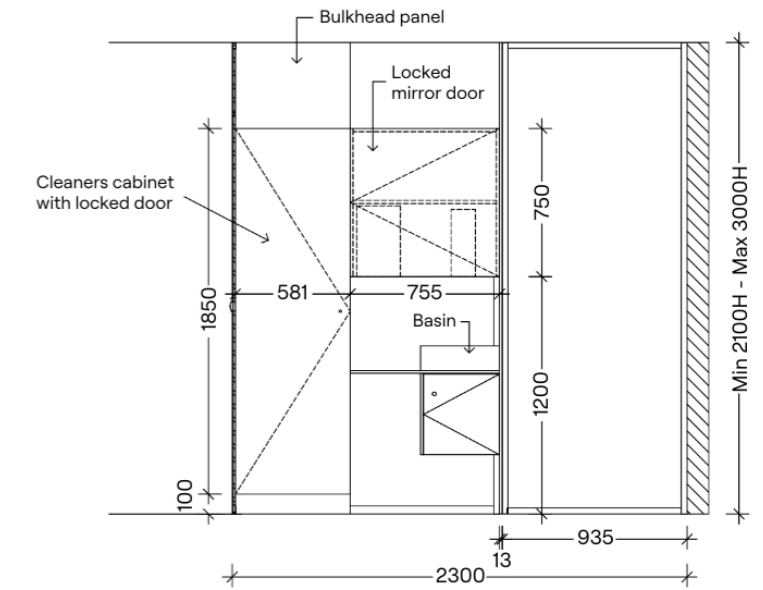
Elevation C



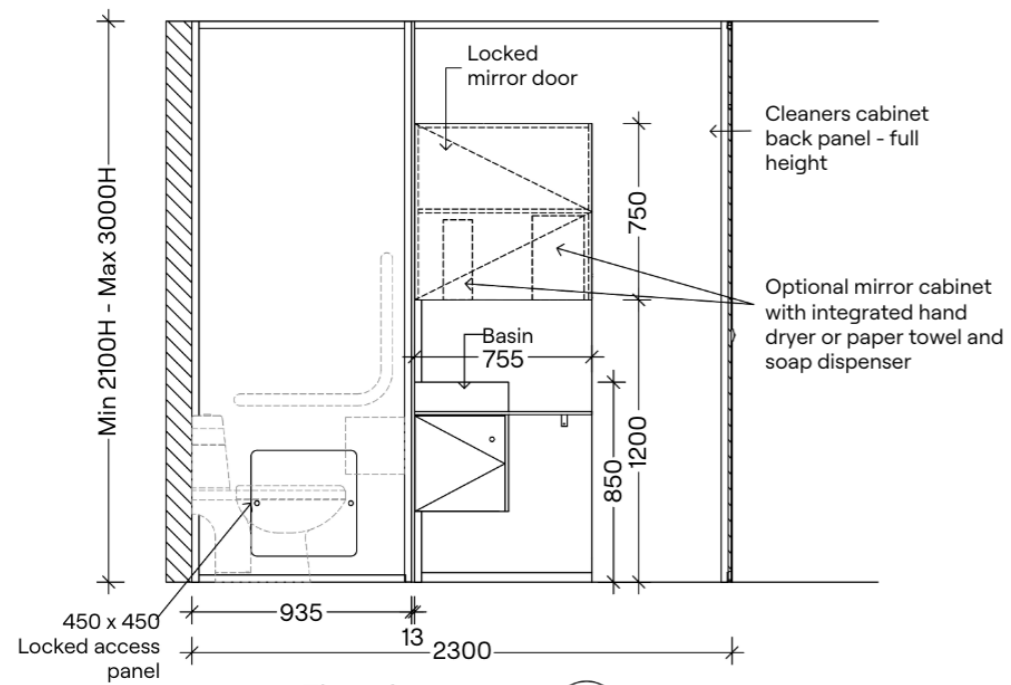
Plan - Optional with Cleaners Cabinet



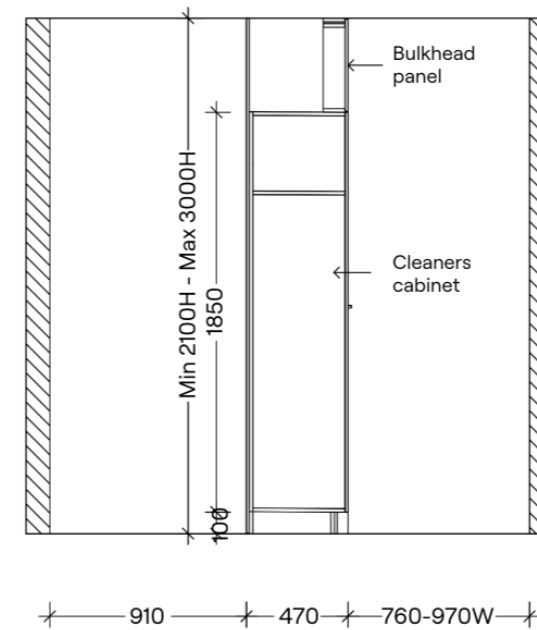
Elevation C - Option with Cleaners Cabinet



Elevation D - Option with Cleaners Cabinet



Elevation B - Optional with Cleaners Cabinet



Elevation E - Optional with Cleaners Cabinet

HOW TO SPECIFY

Product
DuraCube full height self-contained (FHSC-C)

Door and Panel Construction Material
DuraSafe 13mm compact laminate

Construction
Privacy edge angled door and nib

Hardware
Viva satin chrome hardware is standard
Other hardware is available – see pages 104-105

Ceiling Fixing
Aluminium channel
Colour – Select from options on page 105

Floor Mounting
Aluminium angle
Colour – Select from options on page 105

Overall System Height
Min. 2100mm to Max. 3000mm AFFL